



www.irrigationglobal.com

Arkai Amaid spare parts for disc filters

ARKAL

Spare parts Price List
Valid as of Sep 2012



Spare Parts Price List Valid as of Sep 2012

Valid Sep 2012

TABLE OF CONTENTS



¾" Filter	1
¾" Filtap	2
1" Short Filter	3
1" Super Filter	4
1.5" Short Filter	5
1.5" Super Filter	6
2" Super Filter	7-8
2" Dual Filter	9-10
2" Line Filter	11-12
2" Leader Filter	13
2" Dual Lite Filter	14
2" Sand Separator Threaded End Body (Single) With An Accumulator Tank	15
2" Sand Separator Without Screen (For Battery)	16
2" Sand Separator With A Screen	17
3" Twin Filter	18-19
3" Leader Twin Filter	20-21
3" Lite Filter	22
3" Super Angle Filter	23-24
4" Super Angle Filter	25-26
3" Angle Filter	27-28
4" Angle Filter	29-30
4" Double Filter	31-32

Spare Parts Price List Valid as of Sep 2012

TABLE OF CONTENTS



4" Super Leader Filter	33-34
6" Super Leader Filter	35-36
3" Angle Semi-Automatic Screen Filter	37
4" Angle Semi-Automatic Screen Filter	38
4" Super Leader Semi-Automatic Screen Filter	39
6" Super Leader Semi-Automatic Screen Filter	40
2" Spin Klin Model 2 (New Body)	41-42
2" Spin Klin Polypropylene Filter	43-44
2" Spin Klin Model 2	45-46
2" Compact Spin Klin	47
2" Compact Spin Klin	48
2" Compact Spin Klin With DC FT-1 Dp Controller	49
2" Compact Spin Klin With AC FT-1 Dp Controller	50
3" Spin Klin Model 2	51-52
4" Spin Klin Galaxy Aluminum	53-54
4" Spin Klin Galaxy Polypropylene	55-56
4" Spin Klin Galaxy Stainless Steel	57-58
4" Spin Klin Galaxy Stainless Steel	59-60
4" Spin Klin Galaxy Carbon Steel Coated	61-62
6" Spin Klin Galaxy Polypropylene	63
12" Spin Klin Galaxy Super Flow	64

Spare Parts Price List Valid as of Sep 2012

TABLE OF CONTENTS



3" Spin Klin Apollo Angle	65
4" Spin Klin Apollo Angle	66
4" Spin Klin Apollo Twin	67
Spin Klin Spine Model 4	68
AGF	69-70
Battery Components And Valves	71
Control Systems	72-73
Control Systems Parts	74-75
Set Manifold Pp	76-77
Backwash Valves	78-79
Dorot Model 09T - Nc Galil Size 2" Polymeric New	80
Dorot Flush Gal 51 2"x2" Straight Flow	81
Dorot Flush Gal 51 2"x2" Straight Flow	82
Dorot Flush Gal 51 2"x2" Straight Reverse Flow	83
Bermad 2"x2" Metal Straight Flow Blue	84
Bermad Metal Reverse Flow Blue	85
Bermad 2"x2" Polymeric Straight Flow	86
Bermad 2"x2" Polymeric Straight Reverse Flow	87
Bermad 2"x2" Polymeric Angle Flow	88
Bermad 2"x2" Polymeric Straight Flow Sea Water	89
Bermad 2"x2" Polymeric Straight Flow Sea Water	90

Spare Parts Price List Valid as of Sep 2012

TABLE OF CONTENTS

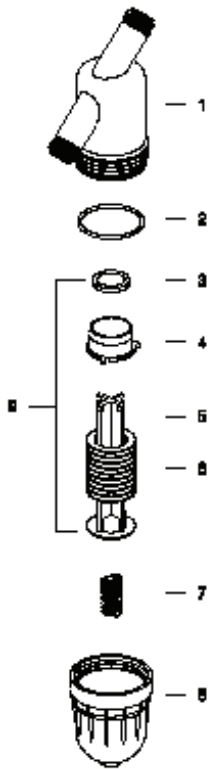


Bermad 2"x2" Polymeric Straight Reverse Flow PP	91
Bermad 2"x2" Polymeric Straight Reverse Flow PP	92
Dorot Flush Gal 3"x2" Backwash Valve, Victaulic A.K.	93
Palslite Polymeric 3"x2" Backwash Valve Victaulic Ends	94
Bermad 3"x3" Straight Victaulic, Model 350	95
Bermad 3"x3" Polymeric Straight Reverse Flow	96
Bermad 3"x3" Polymeric Straight Flow	97-98
Dorot Flush Gal 4"x3" Backwash Valve, Victaulic	99
Dorot 4"x4" Double Chamber Angle Flow Model 63	100
Dorot 4"x4" Double Chamber Angle Flow Model 63	101
Plaslite 4"x3" Backwash Victaulic Ends Rough Diaphragm	102
Bermad 4"x3" Victaulic / Threaded For Star System Red Straight Flow	103
Bermad 4"x4" Victaulic / Victaulic Blue Straight Flow	104
Bermad 4"x4" Victaulic / Victaulic Straight Reverse Flow Blue	105

Spare Parts Price List Valid as of Sep 2012

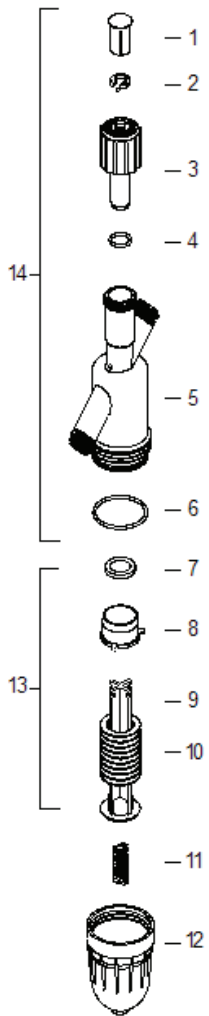
3/4" FILTER

NO.	DESCRIPTION	OLD.CAT.NO	SAP. CAT.NO.	USD \$
1	Filter body	2500 0070	710101-000844	12.60
2	Cover O-ring	5002 5436	770101-000009	1.80
	Cover O-ring viton	5001 5436	770101-000003	14.70
3	Spine ring	2507 0070	710101-000129	1.50
4	Spine tightening ring	2507 0071	710101-000846	2.00
5	Filter spine	2502 0070	710101-000851	5.30
6	3/4" Disc set 400 Micron	2007 1040	700101-000001	7.00
	3/4" Disc set 200 Micron	2007 1080	700101-000002	5.70
	3/4" Disc set 130 Micron	2007 1120	700101-001203	7.00
	3/4" Disc set 100 Micron	2007 1140	700101-000003	7.00
	3/4" Disc set 55 Micron	2007 1200		7.00
7	Compression spring	5044 0008	760107-000001	1.80
8	Filter cover	2501 0070		
9	3/4" Filt. elem. 400 Micron	2107 1040	700101-000059	11.00
	3/4" Filt. elem. 200 Micron	2107 1080	700101-000060	11.00
	3/4" Filt. elem. 130 Micron	2107 1120	700101-001197	11.00
	3/4" Filt. elem. 100 Micron	2107 1140	700101-000061	11.00
	3/4" Filt. elem. 55 Micron	2107 1200	700101-000062	11.00



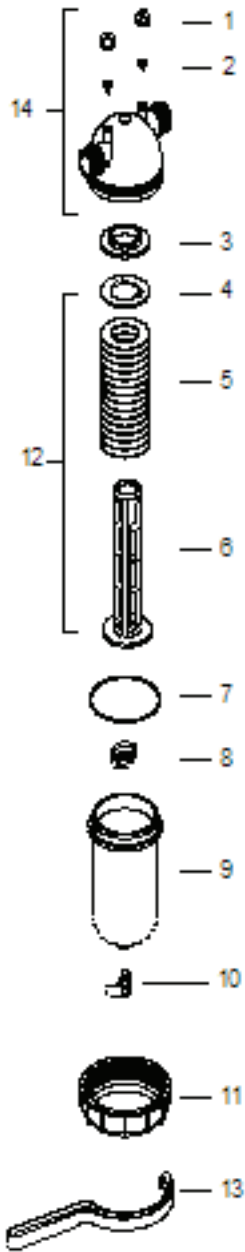
3/4" FILTAP

NO.	DESCRIPTION	OLD.CAT.NO	SAP. CAT.NO.	USD \$
1	Valve cover	2511 0140	710101-000150	1.50
2	Filtap retaining ring	2507 0072	710101-000130	1.20
3	Valve stem	2530 0070		
4	Tap O-ring	5002 1903	770101-000008	1.20
5	Filter body	2500 0072		
6	Cover	5002 5436	770101-000009	1.80
7	Spine ring	2507 0070	710101-000129	1.50
8	Spine tightening ring	2507 0071	710101-000846	2.00
9	Filter spine	2502 0070	710101-000851	5.30
10	3/4" Disc set 400 Micron	2007 1040	700101-000001	7.00
	3/4" Disc set 200 Micron	2007 1080	700101-000002	7.00
	3/4" Disc set 130 Micron	2007 1120	700101-001203	7.00
	3/4" Disc set 100 Micron	2007 1140	700101-000003	7.00
	3/4" Disc set 55 Micron	2007 1200		7.00
11	Filter tightening spring	5044 0008	760107-000001	1.80
12	Filter cover	2501 0070		
13	3/4" Filt. elem. 400 Micron	2107 1040	700101-000059	11.00
	3/4" Filt. elem. 200 Micron	2107 1080	700101-000060	11.00
	3/4" Filt. elem. 130 Micron	2107 1120	700101-001197	11.00
	3/4" Filt. elem. 100 Micron	2107 1140	700101-000061	11.00
	3/4" Filt. elem. 55 Micron	2107 1200	700101-000062	11.00
14	Filter body complex	2207 0002	700190-000069	23.10



1" SHORT FILTER

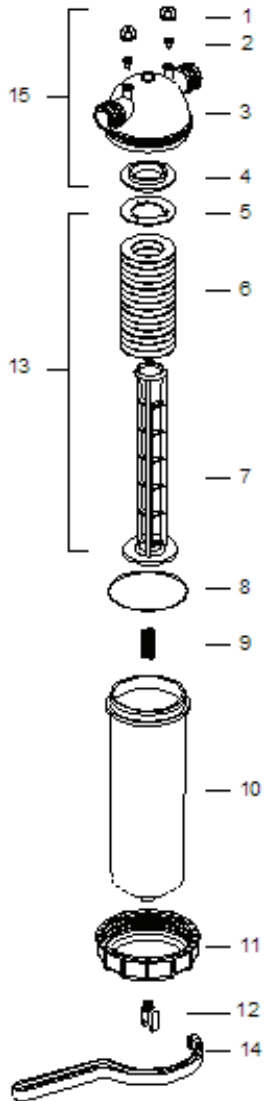
NO.	DESCRIPTION	OLD.CAT.NO	SAP. CAT.NO.	USD \$
1	Gauge port nut	2511 0103	710101-000148	1.80
2	Gauge port seal	5006 0004	770104-000045	4.40
3	Filter adaptor ring	2507 0100	710101-000854	1.80
4	Stop ring for element	2507 0102	710101-000131	1.50
5	1"-1.5" Disc set 400 Micron	2010 1040	700101-000005	16.00
	1"-1.5" Disc set 200 Micron	2010 1080	700101-001178	16.00
	1"-1.5" Disc set 130 Micron	2010 1120	700101-001179	16.00
	1"-1.5" Disc set 100 Micron	2010 1140	700101-001180	16.00
	1"-1.5" Disc set 55 Micron	2010 1200	700101-001181	16.00
6	Spine	2502 0100	710101-000068	7.60
7	O-ring 90x4	5002 9004	770101-000012	2.30
8	Filter spring	5044 0010	760107-000003	7.00
9	Filter cover	2501 0100	710101-000843	24.20
	Filter cover complex	2202 0010	700190-000025	24.20
	Filter cover complex with tap	2202 0013	700190-000028	41.00
	Filter cover with complex cap	2202 0016	700190-000031	27.30
10	¼" Tap	5054 0008	730104-000006	13.70
11	Fixing nut	2506 0100	710101-000849	14.70
12	1"-1.5" Short filt. elem. 400 Micron	2110 1040	700101-000066	20.00
	1"-1.5" Short filt. elem. 200 Micron	2110 1080	700101-000067	20.00
	1"-1.5" Short filt. elem. 130 Micron	2110 1120	700101-001198	20.00
	1"-1.5" Short filt. elem. 100 Micron	2110 1140	700101-001195	20.00
	1"-1.5" Short filt. elem. 55 Micron	2110 1200	700101-000068	20.00
13	1½"-1" Filter wrench	2530 0115		22.10
14	Filter body complex BSP	2208 0001	700190-000070	22.10
	Filter body complex NPT	2208 0002	700190-000071	21.06



Spare Parts Price List Valid as of Sep 2012

1" SUPER FILTER

NO.	DESCRIPTION	OLD.CAT.NO	SAP. CAT.NO.	USD \$
1	Gauge port nut (single unit)	2511 0103	710101-000148	1.80
2	Gauge port seal (single unit)	5006 0004	770104-000045	4.40
3	Filter body (BSP)	2500 0100	710101-000845	0.00
	Filter body (NPT)	2500 0101	710101-000848	0.00
4	Filter adaptor ring	2507 0100	710101-000854	1.80
5	Element retaining ring	2507 0102	710101-000131	1.50
6	1"-1.5" Super Disc set 400 Micron	2012 1040	700101-000007	22.00
	1"-1.5" Super Disc set 200 Micron	2012 1080	700101-000008	22.00
	1"-1.5" Super Disc set 130 Micron	2012 1120	700101-000009	22.00
	1"-1.5" Super Disc set 130 Micron	2012 1140	700101-001206	22.00
	1"-1.5" Super Disc set 55 Micron	2012 1200	700101-001192	22.00
7	Spine	2502 0111	710101-000069	12.60
8	O-ring 90x4	5002 9004	770101-000012	2.30
9	Compression spring	5044 0011	760107-000005	8.50
10	Filter cover	2501 0111	710101-000048	29.40
	Filter cover complex	2202 0011	700190-000026	32.60
	Filter cover complex with cap	2202 0018	700190-000032	35.70
	Filter cover complex with tap	2202 0012	700190-000027	45.20
11	Fixing nut	2506 0100	710101-000849	14.70
12	¼" Tap (*)	5054 0008	730104-000006	13.70
13	1"-1.5" Super filt. elem. 400 Micron	2112 1040	700101-001200	36.00
	1"-1.5" Super filt. elem. 200 Micron	2112 1080	700101-000073	36.00
	1"-1.5" Super filt. elem. 130 Micron	2112 1120	700101-001199	36.00
	1"-1.5" Super filt. elem. 100 Micron	2112 1140	700101-000074	36.00
	1"-1.5" Super filt. elem. 55 Micron	2112 1200	700101-000075	36.00
14	1"-1½" Filter wrench	2530 0115		22.10
15	Filter body complex BSP	2208 0001	700190-000070	22.10
	Filter body complex NPT	2208 0002	700190-000071	21.06

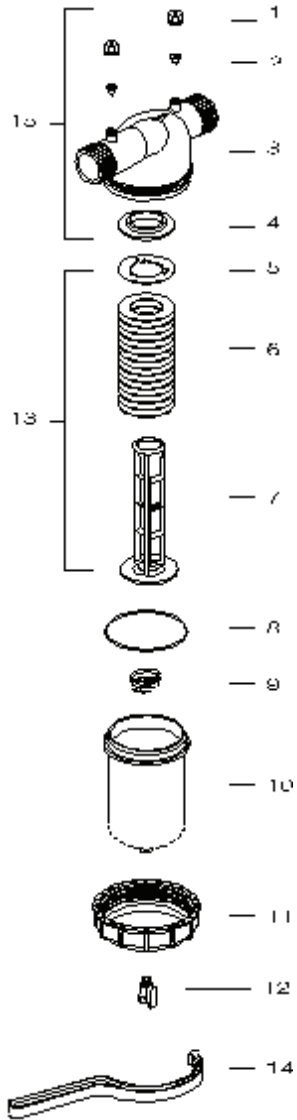


(*) Optional

Spare Parts Price List Valid as of Sep 2012

1.5" SHORT FILTER

NO.	DESCRIPTION	OLD.CAT.NO	SAP. CAT.NO.	USD \$
1	Gauge port nut (single unit)	2511 0103	710101-000148	1.80
2	Gauge port seal (single unit)	5006 0004	770104-000045	4.40
3		2500 0150	710101-000001	0.00
		2500 0151	710101-000002	0.00
4	Filter adaptor ring	2507 0100	710101-000854	1.80
5	Element retaining ring	2507 0102	710101-000131	1.50
6	1"-1.5" Disc set 400 Micron	2010 1040	700101-000005	16.00
	1"-1.5" Disc set 200 Micron	2010 1080	700101-001178	16.00
	1"-1.5" Disc set 130 Micron	2010 1120	700101-001179	16.00
	1"-1.5" Disc set 100 Micron	2010 1140	700101-001180	16.00
	1"-1.5" Disc set 55 Micron	2010 1200	700101-001181	16.00
7	Spine	2502 0100	710101-000068	7.60
8	O-ring 90x4	5002 9004	770101-000012	2.30
9	Compression spring	5044 0010	760107-000003	7.00
10	Filter cover	2501 0100	710101-000843	24.20
	Filter cover complex	2202 0010	700190-000025	24.20
	Filter cover complex with tap	2202 0013	700190-000028	41.00
	Filter cover complex with cap	2202 0016	700190-000031	27.30
11	Fixing nut	2506 0100	710101-000849	14.70
12	¼" Tap (*)	5054 0008	730104-000006	13.70
13	1"-1.5" Short filt. elem.400 Micron	2110 1040	700101-000066	20.00
	1"-1.5" Short filt. elem.200 Micron	2110 1080	700101-000067	20.00
	1"-1.5" Short filt. elem.130 Micron	2110 1120	700101-001198	20.00
	1"-1.5" Short filt. elem.100 Micron	2110 1140	700101-001195	20.00
	1"-1.5" Short filt. elem. 55 Micron	2110 1200	700101-000068	20.00
14	1" Filter wrench	2530 0115		
15	Filter body complex bsp	2208 0003	700190-000072	34.70
	Filter body complex npt	2208 0004	700190-000073	34.70

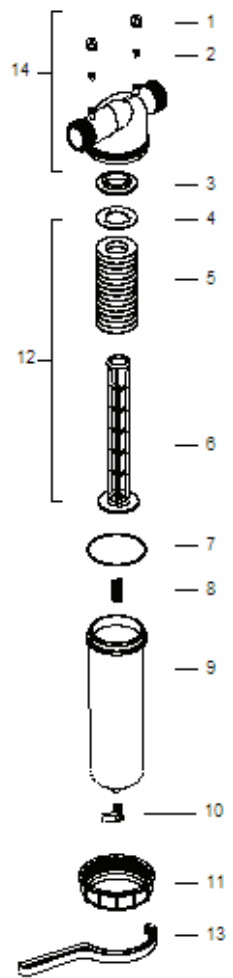


(*) Optional

Spare Parts Price List Valid as of Sep 2012

1.5" SUPER FILTER

NO.	DESCRIPTION	OLD.CAT.NO	SAP. CAT.NO.	USD \$
1	Gauge port nut	2511 0103	710101-000148	1.80
2	Gauge port seal	5006 0004	770104-000045	4.40
3	Filter adaptor ring	2507 0100	710101-000854	1.80
4	Stop ring for element	2507 0102	710101-000131	1.50
5	1"-1.5" Super Disc set 400 Micron	2012 1040	700101-000007	22.00
	1"-1.5" Super Disc set 200 Micron	2012 1080	700101-000008	22.00
	1"-1.5" Super Disc set 130 Micron	2012 1120	700101-000009	22.00
	1"-1.5" Super Disc set 130 Micron	2012 1140	700101-001206	22.00
	1"-1.5" Super Disc set 55 Micron	2012 1200	700101-001192	22.00
6	Spine	2502 0111	710101-000069	12.60
7	90x4	5002 9004	770101-000012	2.30
8	Filter spring	5044 0011	760107-000005	8.50
9	Filter cover	2501 0111	710101-000048	29.40
	Filter cover complex	2202 0011	700190-000026	32.60
	Filter cover complex with cap	2202 0018	700190-000032	35.70
	Filter cover complex with tap	2202 0012	700190-000027	45.20
10	¼" Tap (*)	5054 0008	730104-000006	13.70
11	Fixing nut	2506 0100	710101-000849	14.70
12	1"-1.5" Super filt. elem. 400 Micron	2112 1040	700101-001200	36.00
	1"-1.5" Super filt. elem. 200 Micron	2112 1080	700101-000073	36.00
	1"-1.5" Super filt. elem. 130 Micron	2112 1120	700101-001199	36.00
	1"-1.5" Super filt. elem. 100 Micron	2112 1140	700101-000074	36.00
	1"-1.5" Super filt. elem. 55 Micron	2112 1200	700101-000075	36.00
13	1" Filter wrench	2530 0115		
14	Filter body complex BSP	2208 0003	700190-000072	34.70
	Filter body complex NPT	2208 0004	700190-000073	34.70

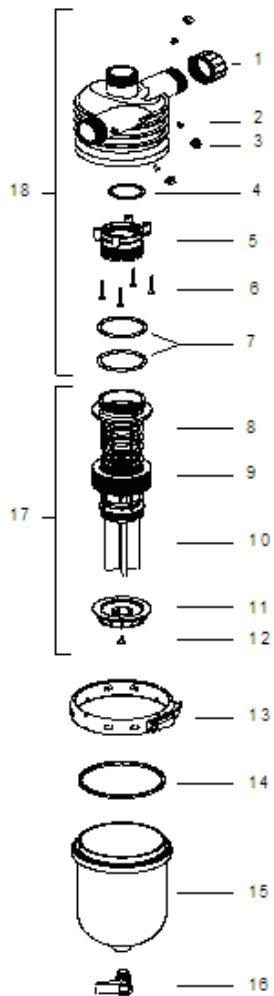


(*) Optional

Spare Parts Price List Valid as of Sep 2012

2" SUPER FILTER

NO.	DESCRIPTION	OLD.CAT.NO	SAP. CAT.NO.	USD \$
1	2" Cap	2511 0200		
2	Gauge port seal	5006 0004	770104-000045	4.40
3	Gauge port nut	2511 0103	710101-000148	1.80
4	O-ring 2-146	5003 2146	770102-000379	1.80
5	Spine base	2503 0210	710101-000080	12.60
6	Fastening bolts (per screw)	5040 1027	760101-000034	0.80
7	O-ring 2-234	5003 2234	770102-000295	1.80
	Spine base complex	2199 0120	700190-000003	17.90
8	Spine	2502 0212	710101-000437	22.10
9	2"-3" Single disc set 400 Micron	2021 1040	700101-000011	80.00
	2"-3" Single disc set 200 Micron	2021 1080	700101-000012	80.00
	2"-3" Single disc set 130 Micron	2021 1120	700101-001202	80.00
	2"-3" Single disc set 100 Micron	2021 1140	700101-001196	80.00
	2"-3" Single disc set 70 Micron	2021 1070	700101-001174	80.00
	2"-3" Single disc set 55 Micron	2021 1200	700101-001175	80.00
	2"-3" Single disc set 40 Micron	2021 1400	700101-001172	80.00
	2"-3" Single disc set 20 Micron	2021 1600	700101-001173	80.00
10	Spine extension	2502 0214	710101-000847	4.90
11	Fixing nut	2506 0211	710101-000434	3.80
12	Fastening screw	5040 1010	760101-000878	0.80
13	Clamp	5042 0030	760108-000002	47.40



[Continued]

2" SUPER FILTER

[Continued]

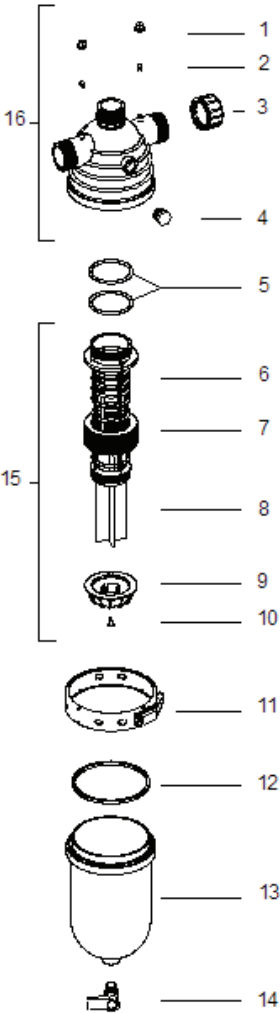
NO.	DESCRIPTION	OLD.CAT.NO	SAP. CAT.NO.	USD \$
14	Cover seal	5005 0002	770104-000248	7.60
15	Filter cover	2501 0210	710101-000906	67.20
	Filter cover with ½" plug	2202 0023	700190-000034	67.20
	Transparent cover (*)	2501 9220	710101-000899	67.20
16	½" X ¼" tap (*)	5054 0212	730104-000217	15.80
17	2"-3" Single filt. elem. 400 Micron	2121 1040	700101-000084	113.00
	2"-3" Single filt. elem. 200 Micron	2121 1080	700101-000086	113.00
	2"-3" Single filt. elem. 130 Micron	2121 1120	700101-001210	113.00
	2"-3" Single filt. elem. 100 Micron	2121 1140	700101-001201	113.00
	2"-3" Single filt. elem. 70 Micron	2121 1070	700101-000085	113.00
	2"-3" Single filt. elem. 55 Micron	2121 1200	700101-000087	113.00
	2"-3" Single filt. elem. 40 Micron	2121 1400	700101-000088	113.00
	2"-3" Single filt. elem. 20 Micron	2121 1600	700101-001194	113.00
18	Spine complex without disc set	2199 0002	700101-001194	30.00
19	Filter body complex	2222 0002	700190-000086	141.80

(*) Optional

(*) For Demonstration purposes only

2" DUAL FILTER

NO.	DESCRIPTION	OLD.CAT.NO	SAP. CAT.NO.	USD \$
1	Gauge Port Nut (Single Unit)	2511 0103	710101-000148	1.80
2	Gauge Port Seal (Single Unit)	5006 0004	770104-000045	4.40
3	2" Cap	2511 0200		
4	½" Plug	5019 0112	780101-000112	1.80
5	O-Ring 2-238	5003 2238		
6	Spine	2502 0212	710101-000437	22.10
7	2"-3" Single Disc Set 400 Micron	2021 1040	700101-000011	80.00
	2"-3" Single Disc Set 200 Micron	2021 1080	700101-000012	80.00
	2"-3" Single Disc Set 130 Micron	2021 1120	700101-001202	80.00
	2"-3" Single Disc Set 100 Micron	2021 1140	700101-001196	80.00
	2"-3" Single Disc Set 70 Micron	2021 1070	700101-001174	80.00
	2"-3" Single Disc Set 55 Micron	2021 1200	700101-001175	80.00
	2"-3" Single Disc Set 40 Micron	2021 1400	700101-001172	80.00
	2"-3" Single Disc Set 20 Micron	2021 1600	700101-001173	80.00
	2"-3" Single Disc Set 130 Micron Nylon	2021 2120	700101-000013	150.00
	2"-3" Single Disc Set 100 Micron Nylon	2021 2140	700101-000014	180.00
	2"-3" Single Disc Set 55 Micron Nylon	2021 2200	700101-000015	240.00
	2"-3" Single Disc Set 20 Micron Nylon	2021 2600	700101-000016	280.00
8	Spine Extension	2502 0214	710101-000847	4.90
9	Fixing Nut	2506 0211	710101-000434	3.80
10	Fastening Bolt	5040 1010	760101-000878	0.80



[Continued]

2" DUAL FILTER

[Continued]

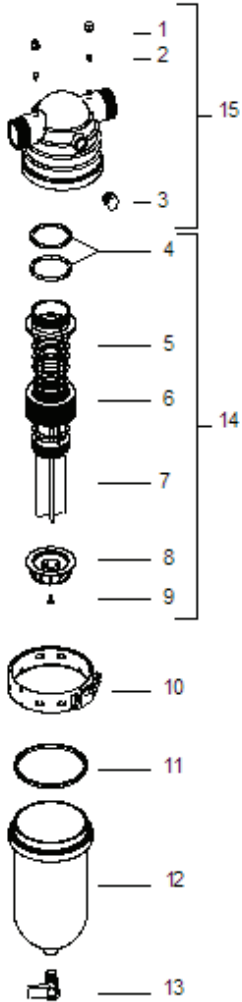
NO.	DESCRIPTION	OLD.CAT.NO	SAP. CAT.NO.	USD \$
11	Clamp	5042 0030	760108-000002	47.40
12	Cover seal	5005 0002	770104-000248	7.60
13	Filter cover	2501 0210	710101-000906	67.20
	Filter cover with ½" plug	2202 0023	700190-000034	67.20
	Transparent cover (*)	2501 9220	710101-000899	67.20
14	½" X ¼" tap (*)	5054 0212	730104-000217	15.80
15	2"-3" Single filt. elem. 400 Micron	2121 1040	700101-000084	113.00
	2"-3" Single filt. elem. 200 Micron	2121 1080	700101-000086	113.00
	2"-3" Single filt. elem. 130 Micron	2121 1120	700101-001210	113.00
	2"-3" Single filt. elem. 100 Micron	2121 1140	700101-001201	113.00
	2"-3" Single filt. elem. 70 Micron	2121 1070	700101-000085	113.00
	2"-3" Single filt. elem. 55 Micron	2121 1200	700101-000087	113.00
	2"-3" Single filt. elem. 40 Micron	2121 1400	700101-000088	113.00
	2"-3" Single filt. elem. 20 Micron	2121 1600	700101-001185	113.00
	Spine complex without disc set	2199 0020	700101-001194	30.00
16	Filter body complex bsp	2204 0001	700190-000063	94.50
	Filter body complex npt	2204 0002	700190-000064	94.50

(*) For Demonstration purposes only

(*) Optional

2" LINE FILTER

NO.	DESCRIPTION	OLD.CAT.NO	SAP. CAT.NO.	USD \$
1	Gauge port nut	2511 0103	710101-000148	1.80
2	Gauge port seal	5006 0004	770104-000045	4.40
3	½" Plug	5019 0112	780101-000112	1.80
4	O-ring 2-238	5003 2238		
5	Spine	2502 0212	710101-000437	22.10
6	2"-3" single Disc set 400 Micron	2021 1040	700101-000011	80.00
	2"-3" single Disc set 200 Micron	2021 1080	700101-000012	80.00
	2"-3" single Disc set 130 Micron	2021 1120	700101-001202	80.00
	2"-3" single Disc set 100 Micron	2021 1140	700101-001196	80.00
	2"-3" single Disc set 70 Micron	2021 1070	700101-001174	80.00
	2"-3" single Disc set 55 Micron	2021 1200	700101-001175	80.00
	2"-3" single Disc set 40 Micron	2021 1400	700101-001172	80.00
	2"-3" single Disc set 20 Micron	2021 1600	700101-001173	80.00
	2"-3" single Disc set 130 Micron nylon	2021 2120	700101-000013	150.00
	2"-3" single Disc set 100 Micron nylon	2021 2140	700101-000014	180.00
	2"-3" single Disc set 55 Micron nylon	2021 2200	700101-000015	240.00
	2"-3" single Disc set 20 Micron nylon	2021 2600	700101-000016	280.00
7	Spine extension	2502 0214	710101-000847	4.90
8	Fixing nut	2506 0211	710101-000434	3.80



(*) Optional

Spare Parts Price List Valid as of Sep 2012

2" LINE FILTER

[Continued]

NO.	DESCRIPTION	OLD.CAT.NO	SAP. CAT.NO.	USD \$
9	Fastening bolt	5040 1010	760101-000878	0.80
10	Clamp	5042 0030	760108-000002	47.40
11	Cover seal	5005 0002	770104-000248	7.60
12	Filter cover	2501 0210	710101-000906	67.20
13	Filter cover with ½" plug	2202 0023	700190-000034	67.20
	Transparent cover (*)	2501 9220	710101-000899	67.20
	½" x ¼" Tap (*)	5054 0212	730104-000217	15.80
14	2"-3" single filt. elem. 400 Micron	2121 1040	700101-000084	113.00
	2"-3" single filt. elem. 200 Micron	2121 1080	700101-000086	113.00
	2"-3" single filt. elem. 130 Micron	2121 1120	700101-001210	113.00
	2"-3" single filt. elem. 100 Micron	2121 1140	700101-001201	113.00
	2"-3" single filt. elem. 70 Micron	2121 1070	700101-000085	113.00
	2"-3" single filt. elem. 55 Micron	2121 1200	700101-000087	113.00
	2"-3" single filt. elem. 40 Micron	2121 1400	700101-000088	113.00
	2"-3" single filt. elem. 20 Micron	2121 1600	700101-001185	113.00
	Spine complex without disc set	2199 0020	700101-001194	30.00
15	Filter body complex BSP	2201 0001	700190-000020	94.50
	Filter body complex NPT	2201 0002	700190-000021	94.50
	Filter body complex VIC ends	2201 0003	700190-000022	94.50

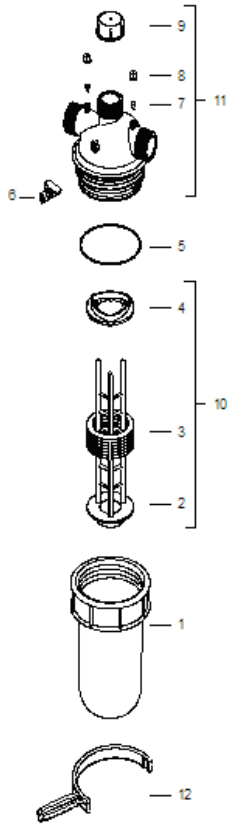
(*) For Demonstration purposes only

(*) Optional

Spare Parts Price List Valid as of Sep 2012

2" LEADER FILTER

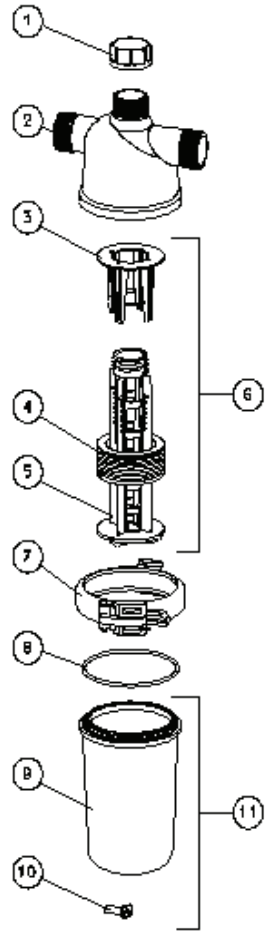
NO.	DESCRIPTION	OLD.CAT.NO	SAP. CAT.NO.	USD \$
1	Cover	2501 0230	710101-000055	55.70
2	Spine	2502 0230	710101-000073	16.80
3	2"-3" single Disc set 400 Micron	2021 1040	700101-000011	80.00
	2"-3" single Disc set 200 Micron	2021 1080	700101-000012	80.00
	2"-3" single Disc set 130 Micron	2021 1120	700101-001202	80.00
	2"-3" single Disc set 100 Micron	2021 1140	700101-001196	80.00
	2"-3" single Disc set 70 Micron	2021 1070	700101-001174	80.00
	2"-3" single Disc set 55 Micron	2021 1200	700101-001175	80.00
	2"-3" single Disc set 40 Micron	2021 1400	700101-001172	80.00
	2"-3" single Disc set 20 Micron	2021 1600	700101-001173	80.00
4	Stop ring element	2507 0208	710101-000134	3.50
5	O-ring 144.3x5.7	5003 1457	770101-000096	3.50
6	½"x¼" Tap	5054 0212	730104-000217	15.80
7	Gauge port seal	5006 0004	770104-000045	4.40
8	Gauge port nut	2511 0103	710101-000148	1.80
9	2" Cap	2511 0200		
10	2"-3" Leader single filt. elem. 400 Micron	2125 1040	700101-000179	91.00
	2"-3" Leader single filt. elem. 200 Micron	2125 1080	700101-000181	91.00
	2"-3" Leader single filt. elem. 130 Micron	2125 1120	700101-000182	91.00
	2"-3" Leader single filt. elem. 100 Micron	2125 1140	700101-000183	91.00
	2"-3" Leader single filt. elem. 70 Micron	2125 1070	700101-000180	91.00
	2"-3" Leader single filt. elem. 55 Micron	2125 1200	700101-000184	91.00
	2"-3" Leader single filt. elem. 20 Micron	2125 1600	700101-000186	91.00
11	Threaded ends body complex	2224 0001	700190-000089	72.50
12	Spine wrench	2530 0117	710101-000432	6.70



Spare Parts Price List Valid as of Sep 2012

2" DUAL LITE FILTER

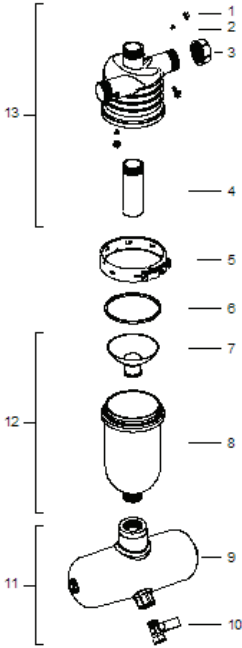
NO.	DESCRIPTION	OLD.CAT.NO	SAP. CAT.NO.	USD \$
1	2" Cap	2511 0200		
2	Filter body	2212 0002	700190-000081	27.30
3	Spine extension	2507 0203		
4	2"-3" Single disc set 400 Micron	2021 1040	700101-000011	80.00
	2"-3" Single disc set 200 Micron	2021 1080	700101-000012	80.00
	2"-3" Single disc set 130 Micron	2021 1120	700101-001202	80.00
	2"-3" Single disc set 100 Micron	2021 1140	700101-001196	80.00
	2"-3" Single disc set 70 Micron	2021 1070	700101-001174	80.00
	2"-3" Single disc set 55 Micron	2021 1200	700101-001175	80.00
	2"-3" Single disc set 40 Micron	2021 1400	700101-001172	80.00
	2"-3" Single disc set 20 Micron	2021 1600	700101-001173	80.00
5	Spine body	2502 0202	710101-000430	8.30
6	2"-3" Lite single filt. elem. 400 Micron	2126 1040	700101-000188	91.00
	2"-3" Lite single filt. elem. 200 Micron	2126 1080	700101-000190	91.00
	2"-3" Lite single filt. elem. 130 Micron	2126 1120	700101-000191	91.00
	2"-3" Lite single filt. elem. 100 Micron	2126 1140	700101-000192	91.00
	2"-3" Lite single filt. elem. 70 Micron	2126 1070	700101-000189	91.00
	2"-3" Lite single filt. elem. 55 Micron	2126 1200	700101-000193	91.00
	2"-3" Lite single filt. elem. 20 Micron	2126 1600	700101-000195	91.00
7	Clamp	2253 0235	700190-000220	31.50
8	O ring 2-361	5003 2361	770102-000048	3.50
9	Filter cover	2202 0232	710103-000035	28.40
	Filter cover with plug	2202 0234	700190-000052	30.50
10	½"X¼" tap	5054 0212	730104-000217	15.80
11	Cover complete	2202 0235	700190-000053	44.10



Spare Parts Price List Valid as of Sep 2012

2" SAND SEPARATOR WITHOUT A SCREEN
THREADED END BODY (SINGLE) WITH AN
ACCUMULATOR TANK

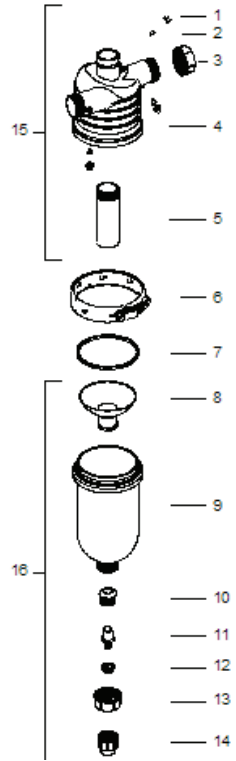
NO.	DESCRIPTION	OLD.CAT.NO	SAP. CAT.NO.	USD \$
1	Gauge port nut	2511 0103	710101-000148	1.80
2	Gauge port seal	5006 0004	770104-000045	4.40
3	2" Cap	2511 0200		
4	2" Nipple	5020 0051	780101-000147	10.20
5	Clamp	5042 0030	760108-000002	47.40
6	Hydraulic seal	5005 0002	770104-000248	7.60
7	Erosion preventer	5006 0022	770104-000057	10.20
8	Cover	2202 0226	700190-000050	67.20
9	Sand accumulator	2253 0230	700190-000217	132.30
10	¾" Tap	5054 0012		
11	Sand accumulator complex	2250 0230	700190-000190	149.10
12	Cover complex	2202 0226	700190-000050	67.20
13	Body complex threaded ends	2218 0002	700190-000084	114.50



Parts 7 and 8 are not available for sale separately. Please refer to item no.12

2" SAND SEPARATOR WITHOUT A SCREEN (FOR A BATTERY)

NO.	DESCRIPTION	OLD.CAT.NO	SAP CAT NO.	USD \$
1	Gauge port nut	2511 0103	710101-000148	1.80
2	Gauge port seal	5006 0004	770104-000045	4.40
3	2" Cap	2511 0200		
4	Threaded ends body	2500 0250	710101-000012	0.00
	Victaulic ends body	2500 0251	710101-000013	0.00
5	2" Nipple	5020 0051	780101-000147	10.20
6	Clamp	5042 0030	760108-000002	47.40
7	Hydraulic seal	5005 0002	770104-000248	7.60
8	Erosion preventer	5006 0022	770104-000057	10.20
9	Cover	2202 0226	700190-000050	67.20
10	Adaptor 2" vic/thr	2253 4016	710103-000257	48.30
11	Body complex vic/thr ends	2218 0003	700190-000085	114.50
15	Body complex threaded ends	2218 0002	700190-000084	114.50
16	Cover complex	2202 0027	700190-000037	101.90



Parts 8 – 14 are not available for sale separately. Please refer to item no. 16

2" SAND SEPARATOR WITH A SCREEN

NO.	DESCRIPTION	OLD.CAT.NO	SAP. CAT.NO.	USD \$
1	Gauge port nut	2511 0103	710101-000148	1.80
2	Gauge port seal	5006 0004	770104-000045	4.40
3	2" Cap	2511 0200		
4	O-ring 2-146	5003 2146	770102-000379	1.80
5	Spine base	2503 0210	710101-000080	12.60
6	Fastening screw	5040 1027	760101-000034	0.80
7	O-ring 2-234	5003 2234	770102-000295	1.80
8	2" - 3" Spine extension	2502 0214	710101-000847	4.90
9	Spine	2502 0212	710101-000437	22.10
10	Screen positioning gasket	5005 0100	770104-000018	9.40
11	Filtration screen + frame	5052 0801	720601-000001	106.10
12	Fixing nut (grey)	2506 0211	710101-000434	3.80
13	Fastening screw	5040 1010	760101-000878	0.80
14	Clamp	5042 0030	760108-000002	47.40
15	Hydraulic seal	5005 0002	770104-000248	7.60
16	Filter cover with ½" threaded	2202 0020	710103-000028	67.20
17	½" x ¼" Tap	5054 0212	730104-000217	15.80
18	Filter body complex	2222 0022	700190-000087	141.80

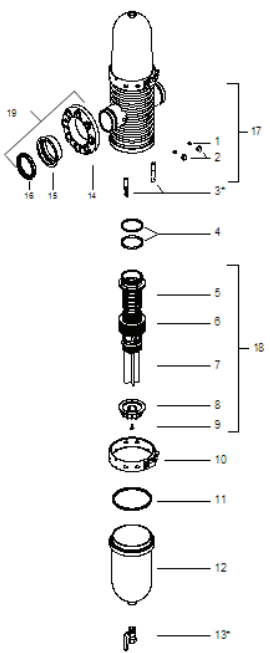


[*] N.A. - No more in production

Spare Parts Price List Valid as of Sep 2012

3" TWIN FILTER

NO.	DESCRIPTION	OLD.CAT.NO	SAP CAT NO.	USD \$
1	Gauge port seal	5006 0004	770104-000045	4.40
2	Gauge port nut	2511 0103	710101-000148	1.80
3	Spine holder (*)	2530 0202	710101-000155	13.70
4	O-ring 2-238	5003 2238		
5	Spine	2502 0212	710101-000437	22.10
6	2"-3" single Disc set 400 Micron	2021 1040	700101-000011	80.00
	2"-3" single Disc set 200 Micron	2021 1080	700101-000012	80.00
	2"-3" single Disc set 130 Micron	2021 1120	700101-001202	80.00
	2"-3" single Disc set 100 Micron	2021 1140	700101-001196	80.00
	2"-3" single Disc set 70 Micron	2021 1070	700101-001174	80.00
	2"-3" single Disc set 55 Micron	2021 1200	700101-001175	80.00
	2"-3" single Disc set 40 Micron	2021 1400	700101-001172	80.00
	2"-3" single Disc set 20 Micron	2021 1600	700101-001173	80.00
	2"-3" single Disc set 130 Micron nylon	2021 2120	700101-000013	150.00
	2"-3" single Disc set 100 Micron nylon	2021 2140	700101-000014	180.00
	2"-3" single Disc set 55 Micron nylon	2021 2200	700101-000015	240.00
	2"-3" single Disc set 20 Micron nylon	2021 2600	700101-000016	280.00
7	Spine extension	2502 0214	710101-000847	4.90
8	Fixing nut	2506 0211	710101-000434	3.80
9	Fastening bolt	5040 1010	760101-000878	0.80
10	Clamp	5042 0030	760108-000002	47.40
11	Cover seal	5005 0002	770104-000248	7.60
12	Filter cover	2501 0210	710101-000906	67.20
	Transparent Filter cover	2501 9220	710101-000899	67.20
	Filter cover with ½" plug	2202 0023	700190-000034	67.20



(Continued)

[*] Optional

Spare Parts Price List Valid as of Sep 2012

3" TWIN FILTER

[Continued]

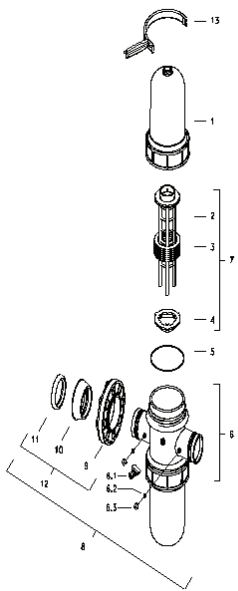
NO.	DESCRIPTION	OLD.CAT.NO	SAP CAT NO.	USD \$
13	½" x ¼" Tap	5054 0212	730104-000217	15.80
14	3" Loose flange	2510 0325	710101-000144	29.40
15	Cone ring	2507 0308	710101-000135	7.40
16	3" Gasket	5005 2013	770104-000034	8.50
17	Filter body complex threaded ends	2232 0001	700190-000099	287.70
	Filter body complex victaulic ends	2232 1001	700190-000105	287.70
18	2"-3" single filt. elem. 400 Micron	2121 1040	700101-000084	113.00
	2"-3" single filt. elem. 200 Micron	2121 1080	700101-000086	113.00
	2"-3" single filt. elem. 130 Micron	2121 1120	700101-001210	113.00
	2"-3" single filt. elem. 100 Micron	2121 1140	700101-001201	113.00
	2"-3" single filt. elem. 70 Micron	2121 1070	700101-000085	113.00
	2"-3" single filt. elem. 55 Micron	2121 1200	700101-000087	113.00
	2"-3" single filt. elem. 40 Micron	2121 1400	700101-000088	113.00
	2"-3" single filt. elem. 20 Micron	2121 1600	700101-001185	113.00
	Spine complex without disc set	2199 0020	700101-001194	30.00
19	3" AK flange	2253 0325	700190-000223	45.20

[*] Optional

Spare Parts Price List Valid as of Sep 2012

3" LEADER TWIN FILTER

NO.	DESCRIPTION	OLD.CAT.NO	SAP. CAT.NO.	USD \$
1	Cover	2501 0230	710101-000055	55.70
2	Spine	2502 0230	710101-000073	16.80
3	2"-3" single Disc set 400 Micron	2021 1040	700101-000011	80.00
	2"-3" single Disc set 200 Micron	2021 1080	700101-000012	80.00
	2"-3" single Disc set 130 Micron	2021 1120	700101-001202	80.00
	2"-3" single Disc set 100 Micron	2021 1140	700101-001196	80.00
	2"-3" single Disc set 70 Micron	2021 1070	700101-001174	80.00
	2"-3" single Disc set 55 Micron	2021 1200	700101-001175	80.00
	2"-3" single Disc set 40 Micron	2021 1400	700101-001172	80.00
	2"-3" single Disc set 20 Micron	2021 1600	700101-001173	80.00
4	2"-3" single Disc set 20 Micron	2507 0208	710101-000134	3.50
5	O-ring 144.3x5.7	5003 1457	770101-000096	3.50
6	Victaulic ends body complex	2232 1011	700190-000107	222.60
	Threaded end body complex	2232 0011	700190-000101	222.60
6.1	½"x¼" Tap	5054 0212	730104-000217	15.80
6.2	Gauge port seal	5006 0004	770104-000045	4.40
6.3	Gauge port nut	2511 0103	710101-000148	1.80



(Continued)

Spare Parts Price List Valid as of Sep 2012

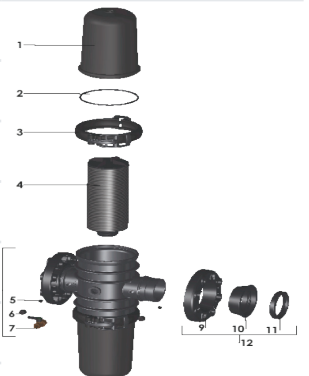
3" LEADER TWIN FILTER

[Continued]

NO.	DESCRIPTION	OLD.CAT.NO	SAP. CAT.NO.	USD \$
7	2"-3" Leader single filt. elem. 400 Micron	2125 1040	700101-000179	91.00
	2"-3" Leader single filt. elem. 200 Micron	2125 1080	700101-000181	91.00
	2"-3" Leader single filt. elem. 130 Micron	2125 1120	700101-000182	91.00
	2"-3" Leader single filt. elem. 100 Micron	2125 1140	700101-000183	91.00
	2"-3" Leader single filt. elem. 70 Micron	2125 1070	700101-000180	91.00
	2"-3" Leader single filt. elem. 55 Micron	2125 1200	700101-000184	91.00
	2"-3" Leader single filt. elem. 20 Micron	2125 1600	700101-000186	91.00
8	Victaulic body complex with flange	2232 5011	700190-000113	222.60
9	3" Loose flange	2510 0325	710101-000144	29.40
10	Cone ring	2507 0308	710101-000135	7.40
11	3" Gasket	5005 2013	770104-000034	8.50
12	3" Ak flange	2253 0325	700190-000223	45.20
13	Cover wrench	2530 0117	710101-000432	6.70

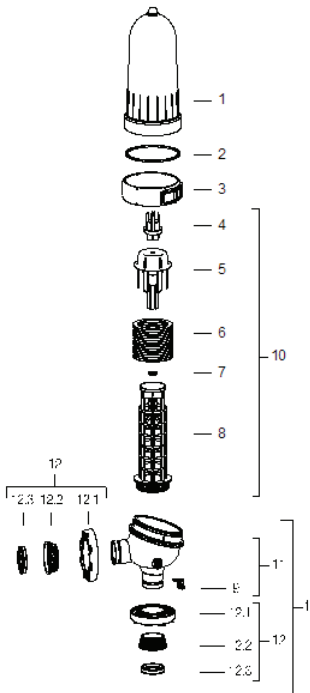
3" LITE FILTER

NO.	DESCRIPTION	OLD.CAT.NO	SAP. CAT.NO.	USD \$
1	Filter cover	2501 0202	710101-000049	28.40
2	O ring 2-361	5003 2361	770102-000048	3.50
3	Clamp	2253 0235RA	700190-000221	32.00
4	2"-3" Lite single filt. elem. 400 Micron	2126 1040	700101-000188	91.00
	2"-3" Lite single filt. elem. 70 Micron	2126 1070	700101-000189	91.00
	2"-3" Lite single filt. elem. 200 Micron	2126 1080	700101-000190	91.00
	2"-3" Lite single filt. elem. 130 Micron	2126 1120	700101-000191	91.00
	2"-3" Lite single filt. elem. 100 Micron	2126 1140	700101-000192	91.00
	2"-3" Lite single filt. elem. 55 Micron	2126 1200	700101-000193	91.00
	2"-3" Lite single filt. elem. 40 Micron	2126 1400	700101-000194	91.00
5	Gauge port seal	5006 0004	770104-000045	4.40
6	Gauge port nut	2511 0103	710101-000148	1.80
7	1/2"x1/4" Tap	5054 0212	730104-000217	15.80
8	Body 3" + AK Flange	2232 5013	700190-000114	180.60
	Body 3" threaded BSP	2232 0013	700190-000103	171.20
	Body 3" threaded NPT	2232 0014	700190-000104	171.20
9	3" Loose flange	2510 0325	710101-000144	29.40
10	Cone ring	2507 0308	710101-000135	7.40
11	3" Gasket	5005 2013	770104-000034	8.50
12	3" AK flange	2253 0325	700190-000223	45.20



3" SUPER ANGLE FILTER

NO.	DESCRIPTION	OLD.CAT.NO	SAP. CAT.NO.	USD \$
1	Filter cover	2501 0601	710101-000057	190.10
2	Hydraulic seal	5005 0004	770104-000254	10.80
3	Clamp	5042 0060	760108-000122	109.20
4	3"-4" Spine tightening nut	2506 0302	710101-000108	10.20
5	3"-4" Spine cap	2506 0304	710103-000374	27.30
6	3"-4" Angle filt. Disc set 400 Micron	2033 2040	700101-000040	177.00
	3"-4" Angle filt. Disc set 200 Micron	2033 2080	700101-000041	177.00
	3"-4" Angle filt. Disc set 130 Micron	2033 2120	700101-001209	177.00
	3"-4" Angle filt. Disc set 100 Micron	2033 2140	700101-001204	177.00
	3"-4" Angle filt. Disc set 55 Micron	2033 2200	700101-000042	177.00
	3"-4" Angle filt. Disc set 20 Micron	2033 2600	700101-000043	177.00
7	O-ring 2-220	5003 2220	770102-000028	2.60
8	3"-4" Spine 99	2502 0302	710101-000074	102.90
9	1/2" X 1/4" tap	5054 0212	730104-000217	15.80
10	3"-4" Angle single filt. elem. 400 Micron	2140 2040	700101-000179	314.00
	3"-4" Angle single filt. elem. 200 Micron	2140 2080	700101-000211	314.00
	3"-4" Angle single filt. elem. 130 Micron	2140 2120	700101-001205	314.00
	3"-4" Angle single filt. elem. 100 Micron	2140 2140	700101-000212	314.00
	3"-4" Angle single filt. elem. 55 Micron	2140 2200	700101-000213	314.00
	3"-4" Angle single filt. elem. 20 Micron	2140 2600	700101-000214	314.00
	3"-4" Spine (without disc set)	2199 0043	700101-000233	153.00



[Continued]

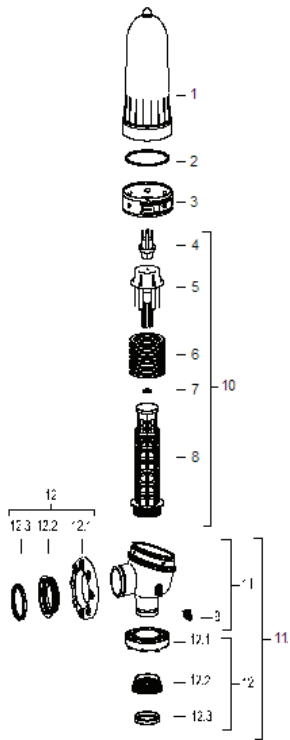
3" SUPER ANGLE FILTER

[Continued]

NO.	DESCRIPTION	OLD.CAT.NO	SAP. CAT.NO.	USD \$
11	3" Body complex victaulic ends	2237 1001	700190-000124	159.60
	3" Body complex threaded ends	2237 0001	700190-000123	159.60
11.1	3" Body complex flange ends	2237 5001	700190-000128	248.90
12	3" Ak flange	2253 0325	700190-000223	45.20
12.1	Loose flange	2510 0325	710101-000144	29.40
12.2	Cone flange	2507 0308	710101-000135	7.40
12.3	3" Gasket style 90	5005 2013	770104-000034	8.50

4" SUPER ANGLE FILTER

NO.	DESCRIPTION	OLD.CAT.NO	SAP. CAT.NO.	USD \$
1	Filter cover	2501 0601	710101-000057	190.10
2	Hydraulic seal	5005 0004	770104-000254	10.80
3	Clamp	5042 0060	760108-000122	109.20
4	3"-4" Spine tightening nut	2506 0302	710101-000108	10.20
5	3"-4" Spine cap	2506 0304	710103-000374	27.30
6	3"-4" Angle filt. disc set 400 Micron	2033 2040	700101-000040	177.00
	3"-4" Angle filt. disc set 200 Micron	2033 2080	700101-000041	177.00
	3"-4" Angle filt. disc set 130 Micron	2033 2120	700101-001209	177.00
	3"-4" Angle filt. disc set 100 Micron	2033 2140	700101-001204	177.00
	3"-4" Angle filt. disc set 55 Micron	2033 2200	700101-000042	177.00
	3"-4" Angle filt. disc set 20 Micron	2033 2600	700101-000043	177.00
7	O-ring 2-220	5003 2220	770102-000028	2.60
8	3"-4" Spine 99	2502 0302	710101-000074	102.90
9	½" X ¼" tap	5054 0212	730104-000217	15.80



[Continued]

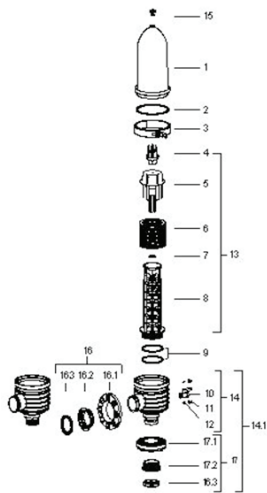
4" SUPER ANGLE FILTER

[Continued]

NO.	DESCRIPTION	OLD.CAT.NO	SAP. CAT.NO.	USD \$
10	3"-4" Angle single filt. elem. 400 Micron	2140 2040	700101-000179	314.00
	3"-4" Angle single filt. elem. 200 Micron	2140 2080	700101-000211	314.00
	3"-4" Angle single filt. elem. 130 Micron	2140 2120	700101-001205	314.00
	3"-4" Angle single filt. elem. 100 Micron	2140 2140	700101-000212	314.00
	3"-4" Angle single filt. elem. 55 Micron	2140 2200	700101-000213	314.00
	3"-4" Angle single filt. elem. 20 Micron	2140 2600	700101-000214	314.00
	3"-4" Spine (without disc set)	2199 0043	700101-000233	153.00
11	4" body complex victaulic ends	2247 1001	700190-000142	188.00
11.1	4" body complex flange ends	2247 5001	700190-000145	303.50
12	4" AK Flange	2253 0425	700190-000227	86.10
12.1	Loose flange	2510 0425	710101-000901	37.80
12.2	Cone flange	2507 0402	710101-000431	10.20
12.3	4" Gasket style 90	5005 2014	770104-000253	10.20

3" ANGLE FILTER

NO.	DESCRIPTION	OLD.CAT.NO	SAP. CAT.NO.	USD \$
1	Filter cover	2200 1308	710101-001045	108.20
2	Hydraulic seal	5005 0004	770104-000254	10.80
3	Clamp	5042 0040	760108-000124	85.10
4	3"-4" Spine tightening nut	2506 0302	710101-000108	10.20
5	3"-4" Spine cap	2506 0304	710103-000374	27.30
6	3"-4" Angle filt. Disc set 400 Micron	2033 2040	700101-000040	177.00
	3"-4" Angle filt. Disc set 200 Micron	2033 2080	700101-000041	177.00
	3"-4" Angle filt. Disc set 130 Micron	2033 2120	700101-001209	177.00
	3"-4" Angle filt. Disc set 100 Micron	2033 2140	700101-001204	177.00
	3"-4" Angle filt. Disc set 55 Micron	2033 2200	700101-000042	177.00
	3"-4" Angle filt. Disc set 20 Micron	2033 2600	700101-000043	177.00
7	O-ring 2-220	5003 2220	770102-000028	2.60
8	3"-4" Spine 99	2502 0302	710101-000074	102.90
9	O-ring 130 x 6	5002 1306	770101-000007	5.30
10	½" x ¼" Tap	5054 0212	730104-000217	15.80
11	Gauge port nut	2511 0103	710101-000148	1.80
12	Gauge port seal	5006 0004	770104-000045	4.40



[Continued]

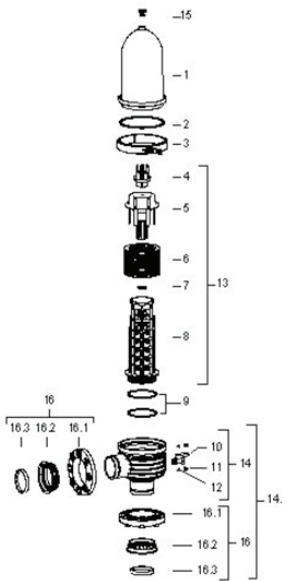
3" ANGLE FILTER

[Continued]

NO.	DESCRIPTION	OLD.CAT.NO	SAP. CAT.NO.	USD \$
13	3"-4" Angle single filt. elem. 400 Micron	2140 2040	700101-000179	314.00
	3"-4" Angle single filt. elem. 200 Micron	2140 2080	700101-000211	314.00
	3"-4" Angle single filt. elem. 130 Micron	2140 2120	700101-001205	314.00
	3"-4" Angle single filt. elem. 100 Micron	2140 2140	700101-000212	314.00
	3"-4" Angle single filt. elem. 55 Micron	2140 2200	700101-000213	314.00
	3"-4" Angle single filt. elem. 20 Micron	2140 2600	700101-000214	314.00
	3"-4" Spine (without disc set)	2199 0043	700101-000233	153.00
14	3" Body complex threaded ends	2235 0001		
	3" Body complex victaulic ends	2235 1001		
14.1	3" Body complex with flanges	2235 8001		
15	½" Plug	5019 0112	780101-000112	1.80
16	3" AK Flange (inlet)	2253 0325	700190-000223	45.20
16.1	Loose flange	2510 0325	710101-000144	29.40
16.2	Cone flange	2507 0308	710101-000135	7.40
16.3	3" Gasket style 90	5005 2013	770104-000034	8.50
17	3" AK Flange (outlet)	2253 0326		
17.1	Loose flange	2200 0325		
17.2	Cone ring	2200 1308		

4" ANGLE FILTER

NO.	DESCRIPTION	OLD.CAT.NO	SAP. CAT.NO.	USD \$
1	Filter cover	2501 0300	710101-001045	108.20
2	Hydraulic seal	5005 0004	770104-000254	10.80
3	Clamp	5042 0040	760108-000124	85.10
4	3"-4" Spine tightening nut	2506 0302	710101-000108	10.20
5	3"-4" Spine cap	2506 0304	710103-000374	27.30
6	3"-4" Angle filt. disc set 400 Micron	2033 2040	700101-000040	177.00
	3"-4" Angle filt. disc set 200 Micron	2033 2080	700101-000041	177.00
	3"-4" Angle filt. disc set 130 Micron	2033 2120	700101-001209	177.00
	3"-4" Angle filt. disc set 100 Micron	2033 2140	700101-001204	177.00
	3"-4" Angle filt. disc set 55 Micron	2033 2200	700101-000042	177.00
	3"-4" Angle filt. disc set 20 Micron	2033 2600	700101-000043	177.00
7	O-ring 2-220	5003 2220	770102-000028	2.60
8	3"-4" Spine 99	2502 0302	710101-000074	102.90
9	O-ring 130 x 6	5002 1306	770101-000007	5.30
10	½" x ¼" Tap	5054 0212	730104-000217	15.80
11	Gauge port nut	2511 0103	710101-000148	1.80



[Continued]

4" ANGLE FILTER

[Continued]

NO.	DESCRIPTION	OLD.CAT.NO	SAP. CAT.NO.	USD \$
12	Gauge port seal	5006 0004	770104-000045	4.40
13	3"-4" Angle single filt. elem. 400 Micron	2140 2040	700101-000179	314.00
	3"-4" Angle single filt. elem. 200 Micron	2140 2080	700101-000211	314.00
	3"-4" Angle single filt. elem. 130 Micron	2140 2120	700101-001205	314.00
	3"-4" Angle single filt. elem. 100 Micron	2140 2140	700101-000212	314.00
	3"-4" Angle single filt. elem. 55 Micron	2140 2200	700101-000213	314.00
	3"-4" Angle single filt. elem. 20 Micron	2140 2600	700101-000214	314.00
	3"-4" Spine (without disc set)	2199 0043	700101-000233	153.00
14	4" Body complex victaulic ends	2242 1001		
14.1	4" Body complex with flanges	2242 7000		
15	½" Plug	5019 0112	780101-000112	1.80
16	4" AK Flange	2253 0425	700190-000227	86.10
16.1	Loose flange	2510 0425	710101-000901	37.80
16.2	Cone flange	2507 0402	710101-000431	10.20
16.3	4" Gasket style 90	5005 2014	770104-000253	10.20

4" DOUBLE FILTER

NO.	DESCRIPTION	OLD.CAT.NO	SAP. CAT.NO.	USD \$
1	Double Filter body	2500 0440		
2	Filter cover	2501 0300	710101-001045	108.20
3	Hydraulic seal	5005 0004	770104-000254	10.80
4	Clamp	5042 0040	760108-000124	85.10
5	3"-4" Spine tightening nut	2506 0302	710101-000108	10.20
6	3"-4" Angle filt. Disc set 400 Micron	2033 2040	700101-000040	177.00
	3"-4" Angle filt. Disc set 200 Micron	2033 2080	700101-000041	177.00
	3"-4" Angle filt. Disc set 130 Micron	2033 2120	700101-001209	177.00
	3"-4" Angle filt. Disc set 100 Micron	2033 2140	700101-001204	177.00
	3"-4" Angle filt. Disc set 55 Micron	2033 2200	700101-000042	177.00
	3"-4" Angle filt. Disc set 20 Micron	2033 2600	700101-000043	177.00
7	Disc set pair	2040 2120	700101-000055	354.00
8	O-ring 2-220	5003 2220	770102-000028	2.60
9	3"-4" Spine 99	2502 0302	710101-000074	102.90
10	O-ring 130 x 6	5002 1306	770101-000007	5.30
12	¾" Plug	5019 0113	780101-000113	1.80
13	3"-4" Angle single filt. elem. 400 Micron	2140 2040	700101-000179	314.00
	3"-4" Angle single filt. elem. 200 Micron	2140 2080	700101-000211	314.00
	3"-4" Angle single filt. elem. 130 Micron	2140 2120	700101-001205	314.00
	3"-4" Angle single filt. elem. 100 Micron	2140 2140	700101-000212	314.00
	3"-4" Angle single filt. elem. 55 Micron	2140 2200	700101-000213	314.00
	3"-4" Angle single filt. elem. 20 Micron	2140 2600	700101-000214	314.00
	4" Single spine 99 (without disc set)	2199 0043	700101-000233	153.00

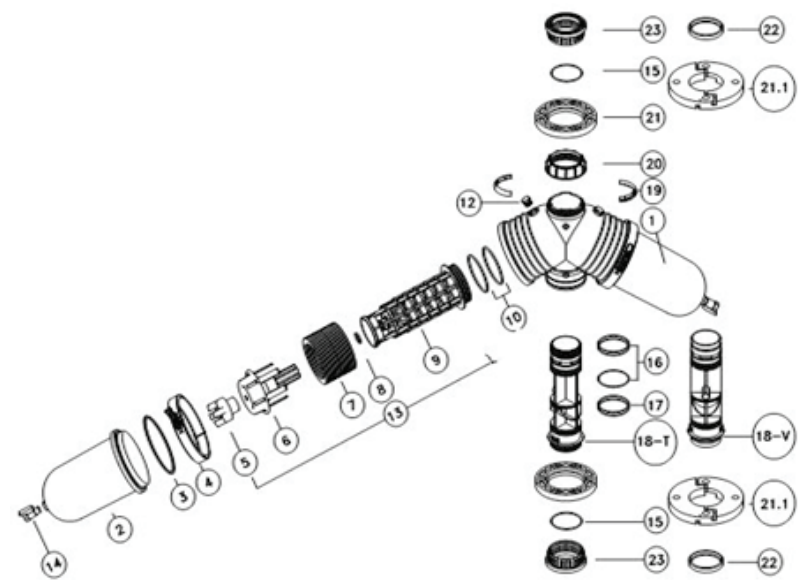
[Continued]

Spare Parts Price List Valid as of Sep 2012

4" DOUBLE FILTER

[Continued]

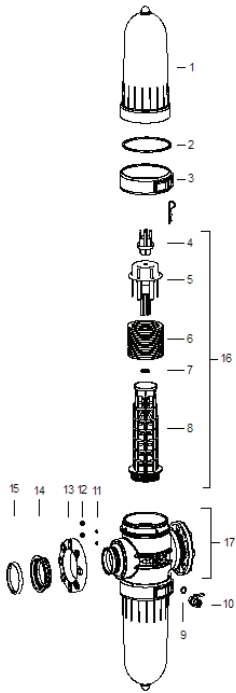
NO.	DESCRIPTION	OLD.CAT.NO	SAP. CAT.NO.	USD \$
14	¾" Tap	5054 0012		
15	O-ring 2-348	5002 2348	770102-000373	0.00
16	O-ring 2-347	5002 2347	770102-000372	0.00
17	O-ring 2-349	5002 2349	770102-000022	0.00
18T	Central tube threaded	2505 0400		
18V	Central tube victaulic	2505 0401		
19	Locking shell	2530 0402		
20	Fixing nut	2506 0410	710101-000118	7.40
21.1	4" BSTD / DIN quick flange	5030 1615	740101-000161	71.40
	4" ASA quick flange	5030 1612	740101-000159	71.40
22	4" Gasket 90 style	5005 2014	770104-000253	10.20
23	Flange nut	2506 0422		
	4" Body complex flange ends	2244 5001		
	4" Body complex victaulic ends	2244 1001		



Spare Parts Price List Valid as of Sep 2012

4" SUPER LEADER FILTER

NO.	DESCRIPTION	OLD.CAT.NO	SAP. CAT.NO.	USD \$
1	Filter cover	2501 0601	710101-000057	190.10
2	Hydraulic seal	5005 0004	770104-000254	10.80
3	Clamp	5042 0060	760108-000122	109.20
4	3"-4" Spine tightening nut	2506 0302	710101-000108	10.20
5	3"-4" Spine cap	2506 0304	710103-000374	27.30
6	3"-4" Angle filt. Disc set 400 Micron	2033 2040	700101-000040	177.00
	3"-4" Angle filt. Disc set 200 Micron	2033 2080	700101-000041	177.00
	3"-4" Angle filt. Disc set 130 Micron	2033 2120	700101-001209	177.00
	3"-4" Angle filt. Disc set 100 Micron	2033 2140	700101-001204	177.00
	3"-4" Angle filt. Disc set 55 Micron	2033 2200	700101-000042	177.00
	3"-4" Angle filt. Disc set 20 Micron	2033 2600	700101-000043	177.00
7	O-ring 2-220	5003 2220		
8	3"-4" Spine 99	2502 0302	710101-000074	102.90
9	O-ring 2-311	5003 2311	770102-000043	2.60
10	¾" Tap	5054 0112	730104-000231	17.90
11	Gauge port seal	5006 0004	770104-000045	4.40
12	Gauge port nut	2511 0103	710101-000148	1.80
13	4" Loose flange	2510 0425	710101-000901	37.80
14	Cone ring	2507 0402	710101-000431	10.20
15	Gasket 4" style 90	5005 2014	770104-000253	10.20



[Continued]

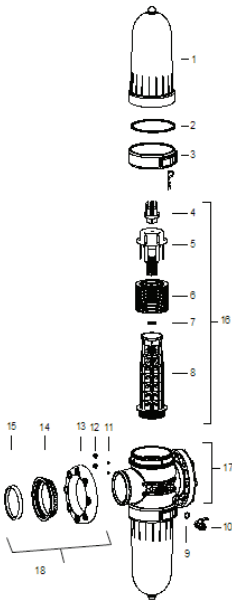
4" SUPER LEADER FILTER

[Continued]

NO.	DESCRIPTION	OLD.CAT.NO	SAP. CAT.NO.	USD \$
16	3"-4" Angle single filt. elem. 400 Micron	2140 2040	700101-000179	314.00
	3"-4" Angle single filt. elem. 200 Micron	2140 2080	700101-000211	314.00
	3"-4" Angle single filt. elem. 130 Micron	2140 2120	700101-001205	314.00
	3"-4" Angle single filt. elem. 100 Micron	2140 2140	700101-000212	314.00
	3"-4" Angle single filt. elem. 55 Micron	2140 2200	700101-000213	314.00
	3"-4" Angle single filt. elem. 20 Micron	2140 2600	700101-000214	314.00
	3"-4" Spine 99 (w/o disc set)	2199 0043	700101-000233	153.00
17	4" Body complex victaulic ends (445 mm)	2245 0001	700190-000133	508.20
	4" Body complex with flange	2245 5001	700190-000135	622.70
18	4" Short body complex victaulic ends (415 mm)	2245 0002	700190-000134	508.20

6" SUPER LEADER FILTER

NO.	DESCRIPTION	OLD.CAT.NO	SAP. CAT.NO.	USD \$
1	Filter cover	2501 0601	710101-000057	190.10
2	Hydraulic seal	5005 0004	770104-000254	10.80
3	Clamp	5042 0060	760108-000122	109.20
4	3"-4" Spine tightening nut	2506 0302	710101-000108	10.20
5	3"-4" Spine cap	2506 0304	710103-000374	27.30
6	3"-4" Angle filt. disc set 400 Micron	2033 2040	700101-000040	177.00
	3"-4" Angle filt. disc set 200 Micron	2033 2080	700101-000041	177.00
	3"-4" Angle filt. disc set 130 Micron	2033 2120	700101-001209	177.00
	3"-4" Angle filt. disc set 100 Micron	2033 2140	700101-001204	177.00
	3"-4" Angle filt. disc set 55 Micron	2033 2200	700101-000042	177.00
	3"-4" Angle filt. disc set 20 Micron	2033 2600	700101-000043	177.00
7	O-ring 2-220	5003 2220	770102-000028	2.60
8	3"-4" Spine 99	2502 0302	710101-000074	102.90
9	O-ring 2-311	5003 2311	770102-000043	2.60
10	¾" Tap	5054 0112	730104-000231	17.90
11	Gauge port seal	5006 0004	770104-000045	4.40
12	Gauge port nut	2511 0103	710101-000148	1.80
13	6" Loose flange	2510 0625	710101-000900	77.70
14	Cone ring	2507 0602	710101-000861	16.80



(Continued)

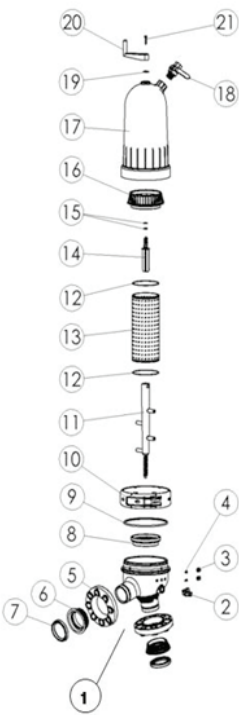
6" SUPER LEADER FILTER

(Continued)

NO.	DESCRIPTION	OLD.CAT.NO	SAP. CAT.NO.	USD \$
15	Gasket 6" style 90	5005 2016	770104-000036	16.80
16	3"-4" Angle single filt. elem. 400 Micron	2140 2040	700101-000179	96.00
	3"-4" Angle single filt. elem. 200 Micron	2140 2080	700101-000211	314.00
	3"-4" Angle single filt. elem. 130 Micron	2140 2120	700101-001205	314.00
	3"-4" Angle single filt. elem. 100 Micron	2140 2140	700101-000212	314.00
	3"-4" Angle single filt. elem. 55 Micron	2140 2200	700101-000213	314.00
	3"-4" Angle single filt. elem. 20 Micron	2140 2600	700101-000214	314.00
	3"-4" spine 99 (w/o disc set)	2199 0043	700101-000233	153.00
17	6" body complex victaulic ends	2246 0001	700190-000139	508.20
	6" body complex with flange	2246 5001	700190-000140	729.80
18	6" Arkal flange	2253 0625	700190-000238	111.30

3" ANGLE SEMI-AUTOMATIC SCREEN FILTER

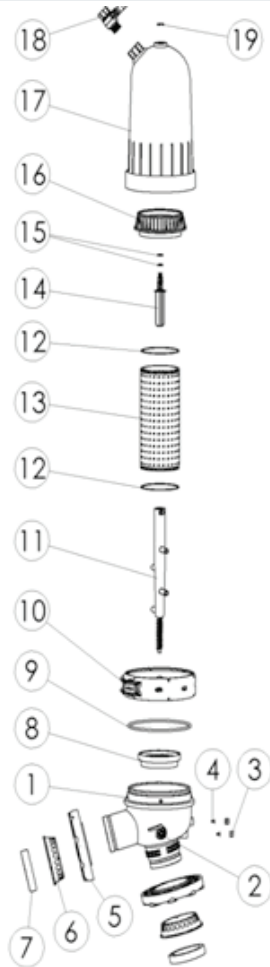
NO.	DESCRIPTION	OLD.CAT.NO	SAP. CAT.NO.	USD \$
1	3" Angle body vic	2237 1001	700190-000124	159.60
	3" Body complex flange ends	2237 5001	700190-000128	248.90
2	Ball tap 1/4"x1/2"	5054 0212	730104-000217	15.80
3	Gauge port nut	2511 0103	710101-000148	1.80
4	Gauge port seal	5006 0004	770104-000045	4.40
5	3" Loose flange	2510 0325	710101-000144	29.40
6	3" Cone ring	2507 0308	710101-000135	7.40
7	3" Seal for q/f	5005 2013	770104-000034	8.50
8	Lower seat	2503 0407	710103-000373	133.40
9	3"-4" Hydraulic seal	5005 0004	770104-000254	10.80
10	Clamp	5042 0060	760108-000122	109.20
11	Dirt collector	2505 0403	710101-000101	215.30
12	Seal for screen	5002 2250	710102-000019	
13	130 Micron screen		700101-001267	218.00
14	Dirt collector axis	2505 0402	710101-000100	0.00
15	O-ring 14x3 epdm	5003 1403	770101-000017	1.70
16	Upper seat	2503 0408	710101-000089	0.00
17	Cover assembly	2202 0064	700190-000043	360.20
	Cover assembly + dirt collector	2202 0065	700190-000044	470.40
18	1" Flushing valve	5054 0017	730104-000009	25.20
19	Clamping disc	2507 0409	710101-000137	5.60
20	Handle	2530 0409	710101-000175	20.00
21	Bolt 6.3X38 ss304	5040 1027	760101-000034	0.80



Spare Parts Price List Valid as of Sep 2012

4" ANGLE SEMI-AUTOMATIC SCREEN FILTER

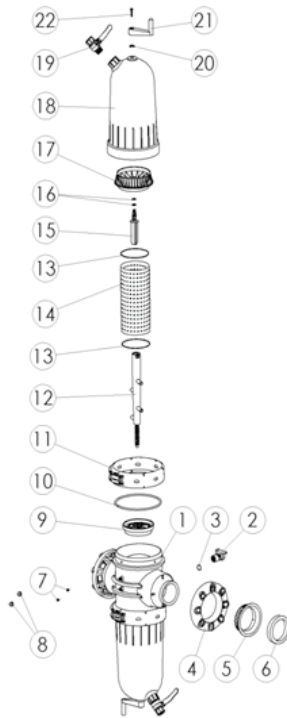
NO.	DESCRIPTION	OLD.CAT.NO	SAP. CAT.NO.	USD \$
1	4" Body complex victaulic ends	2247 1001	700190-000142	188.00
	4" Body complex flange ends	2247 5001	700190-000145	303.50
2	Ball tap 1/4"x1/2"	5054 0212	730104-000217	15.80
3	Gauge port nut	2511 0103	710101-000148	1.80
4	Gauge port seal	5006 0004	770104-000045	4.40
5	4" Loose flange	2510 0425	710101-000901	37.80
6	4" Cone ring	2507 0402	710101-000431	10.20
7	4" Seal for q/f	5005 2014	770104-000253	10.20
8	Lower seat	2503 0407	710103-000373	133.40
9	3"-4" Hydraulic seal	5005 0004	770104-000254	10.80
10	Clamp	5042 0060	760108-000122	109.20
11	Dirt collector	2505 0403	710101-000101	215.30
12	Seal for screen	5002 2250	770102-000019	13.70
13	130 Micron screen		700101-001267	314.00
14	Dirt collector axis	2505 0402	710101-000100	0.00
15	O-ring 14x3 epdm	5003 1403	770101-000017	1.70
16	Upper seat	2503 0408	710101-000089	0.00
17	Cover assembly	2202 0064	700190-000043	360.20
	Cover assembly + dirt collector	2202 0065	700190-000044	470.40
18	1" Flushing valve	5054 0017	730104-000009	25.20
19	Clamping disc	2507 0409	710101-000137	5.60
20	Handle	2530 0409	710101-000175	20.00
21	Bolt 6.3X38 ss304	5040 1027	760101-000034	0.80



Spare Parts Price List Valid as of Sep 2012

4" SUPER LEADER SEMI-AUTOMATIC SCREEN FILTER

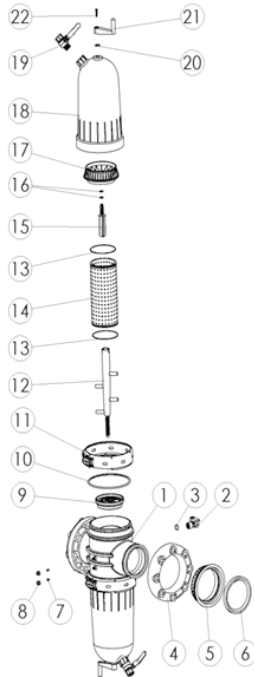
NO.	DESCRIPTION	OLD.CAT.NO	SAP. CAT.NO.	USD \$
1	4" Body complex victaulic ends (445 mm)	2245 0001	700190-000133	508.20
	4" Body complex with flange	2245 5001	700190-000135	622.70
2	3/4" Sn tap	5054 0112	730104-000231	17.90
3	O-ring 2x311	5003 2311	770102-000043	2.60
4	4" Loose flange	2510 0425	710101-000901	37.80
5	4" Cone ring	2507 0402	710101-000431	10.20
6	4" Seal for qf	5005 2014	770104-000253	10.20
7	Gauge port seal	5006 0004	770104-000045	4.40
8	Gauge port nut	2511 0103	710101-000148	1.80
9	Lower seat	2503 0407	710103-000373	133.40
10	Hydraulic seal	5005 0004	770104-000254	10.80
11	Clamp	5042 0060	760108-000122	109.20
12	Dirt collector	2505 0403	710101-000101	215.30
13	Seal for screen	5002 2250	770102-000019	13.70
14	130 Micron screen		700101-001267	218.00
15	Dirt collector axis	2505 0402	710101-000100	0.00
16	O-ring 14x3	5003 1403	770101-000017	1.70
17	Upper seat	2503 0408	710101-000089	0.00
18	Cover assembly	2202 0064	700190-000043	360.20
	Cover assembly + dirt collector	2202 0065	700190-000044	470.40
19	1" Flushing valve	5054 0017	730104-000009	25.20
20	Clamping disc	2507 0409	710101-000137	5.60
21	Handle	2530 0409	710101-000175	20.00
22	Bolt 6.3X38 ss	5040 1027	760101-000034	0.80



Spare Parts Price List Valid as of Sep 2012

6" SUPER LEADER SEMI-AUTOMATIC SCREEN FILTER

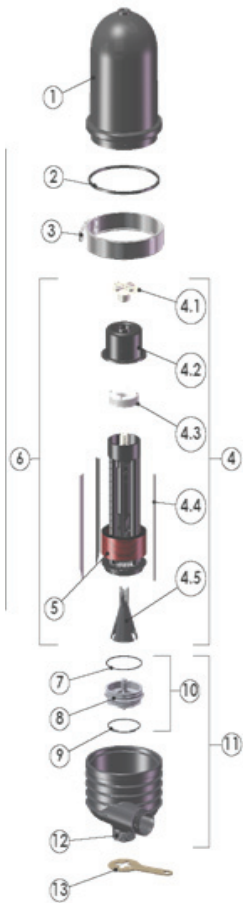
NO.	DESCRIPTION	OLD.CAT.NO	SAP. CAT.NO.	USD \$
1	6" Body complex victaulic ends	2246 0001	700190-000139	508.20
	6" Body complex with flange	2246 5001	700190-000140	729.80
2	3/4" Sn tap	5054 0112	730104-000231	17.90
3	O-ring 2x311	5003 2311	770102-000043	2.60
4	6" Loose flange	2510 0625	710101-000900	77.70
5	6" Cone ring	2507 0602	710101-000861	16.80
6	6" Seal for qf	5005 2016	770104-000036	16.80
7	Gauge port seal	5006 0004	770104-000045	4.40
8	Gauge port nut	2511 0103	710101-000148	1.80
9	Lower seat	2503 0407	710103-000373	133.40
10	Hydraulic seal	5005 0004	770104-000254	10.80
11	Clamp	5042 0060	760108-000122	109.20
12	Dirt collector	2505 0403	710101-000101	215.30
13	Seal for screen	5002 2250	770102-000019	13.70
14	130 Micron Screen		700101-001267	218.00
15	Dirt collector axis	2505 0402	710101-000100	0.00
16	O-ring 14x3	5003 1403	770101-000017	1.70
17	Upper seat	2503 0408	710101-000089	0.00
18	Cover assembly	2202 0064	700190-000043	360.20
	Cover assembly + dirt collector	2202 0065	700190-000044	470.40
19	1" Flushing valve	5054 0017	730104-000009	25.20
20	Clamping disc	2507 0409	710101-000137	5.60
21	Handle	2530 0409	710101-000175	20.00
22	Bolt 6.3X38 st st	5040 1027	760101-000034	0.80



Spare Parts Price List Valid as of Sep 2012

2" SPIN KLIN MODEL 2 (NEW BODY)

NO.	DESCRIPTION	OLD.CAT.NO	SAP. CAT.NO.	USD \$
1	Filter cover	2501 0210	710101-000906	67.20
	Transparent cover (*)	2501 9220	710101-000899	67.20
2	Hydraulic seal	5005 0002	770104-000248	7.60
3	Clamp	5042 0030	760108-000002	47.40
4	Spin Klin spine complex w/o discs	2199 1002	700101-001193	276.00
4.1	Butterfly nut	2506 0224	710101-000435	10.20
4.2	Tightening cylinder	2506 0226	710101-000106	20.00
4.3	Piston	2530 0217	710101-000436	12.60
4.4	Abrasion shield	5076 0009	760109-000045	2.30
4.5	Cone Membrane	5006 0008	770104-000065	45.20
5	2"-3" SK single disc set 400 Micron	2022 1040	700101-001187	80.00
	2"-3" SK single disc set 200 Micron	2022 1080	700101-001188	80.00
	2"-3" SK single disc set 130 Micron	2022 1120	700101-001176	80.00
	2"-3" SK single disc set 100 Micron	2022 1140	700101-001177	80.00
	2"-3" SK single disc set 70 Micron	2022 1070	700101-001184	80.00
	2"-3" SK single disc set 55 Micron	2022 1200	700101-001183	80.00
	2"-3" SK single disc set 40 Micron	2022 1400	700101-001189	80.00
	2"-3" SK single disc set 20 Micron	2022 1600	700101-001182	80.00
	2"-3" SK single disc set 200 Micron nylon	2022 2080	700101-000020	150.00
	2"-3" SK single disc set 130 Micron nylon	2022 2120	700101-000021	175.00
	2"-3" SK single disc set 100 Micron nylon	2022 2140	700101-000022	175.00
	2"-3" SK single disc set 70 Micron nylon	2022 2070	700101-000019	175.00
	2"-3" SK single disc set 55 Micron nylon	2022 2200	700101-001190	210.00
	2"-3" SK single disc set 20 Micron nylon	2022 2600	700101-000023	240.00



[Continued]

(*) For Demonstration purposes only

Spare Parts Price List Valid as of Sep 2012

2" SPIN KLIN MODEL 2 (NEW BODY)

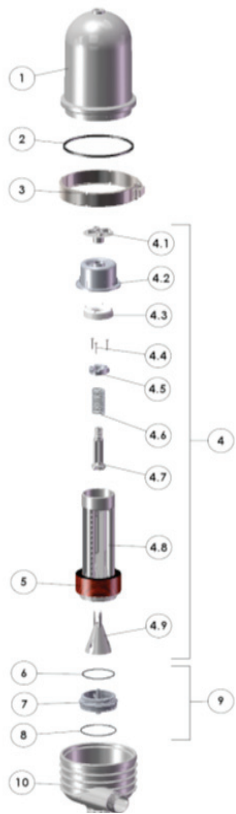
[Continued]

NO.	DESCRIPTION	OLD.CAT.NO	SAP. CAT.NO.	USD \$
6	2"-3" SK single filt. elem. 400 Micron	2123 1040	700101-000110	351.00
	2"-3" SK single filt. elem. 200 Micron	2123 1080	700101-000115	351.00
	2"-3" SK single filt. elem. 130 Micron	2123 1120	700101-000271	351.00
	2"-3" SK single filt. elem. 100 Micron	2123 1140	700101-000120	351.00
	2"-3" SK single filt. elem. 70 Micron	2123 1070	700101-000112	351.00
	2"-3" SK single filt. elem. 55 Micron	2123 1200	700101-000123	351.00
	2"-3" SK single filt. elem. 40 Micron	2123 1400	700101-000088	351.00
	2"-3" SK single filt. elem. 20 Micron	2123 1600	700101-000127	351.00
7	O-ring 2 – 234	5003 2234	770102-000295	1.80
8	Spine adapter	2503 0324	710101-000082	12.60
9	O-ring 2-237	5003 2237	770102-000034	3.50
10	Complex adapter	2234 0324	700190-000117	21.00
11	2" Spin Klin body threaded out complex	2224 0252	700190-000092	120.80
	2" Spin Klin body victaulic out complex	2224 0253	700190-000093	120.80
13	Butterfly nut wrench	5076 0028	760109-000055	20.00
	Spine wrench	5076 0019	760109-000131	67.50
	Spine socket wrench	5076 0097	760109-000080	200.60

Spare Parts Price List Valid as of Sep 2012

ARKAL 2" SPIN KLIN POLYPROPYLENE FILTER

NO.	DESCRIPTION	OLD.CAT.NO	SAP. CAT.NO.	USD \$
1	Filter cover	10/29/12	710101-000061	81.90
	Trasparent cover	2501 9220	710101-000899	67.20
2	Hydraulic seal	5005 0002Wrc5	770104-000015	39.00
3	Clamp	2253 0030	760108-000060	57.80
4	Spin Klin Model 2.7 Spine	2199 1008Wrc	700101-000272	312.00
4.1	Spin Klin battery nut	2506 6224	710101-000125	0.00
4.2	Spin Klin tightening cylinder	2506 6226	710101-000127	26.30
4.3	Spin Klin spine piston	2503 6216		
4.4	Fastening bolts 10x1¼	5040 1009	760101-000018	0.00
4.5	Spin Klin spine clamping disc	2507 6206	710101-000143	0.00
4.6	Spring	5044 0028	760107-000010	0.00
4.7	Spin Klin spine screw	2530 6213	710101-000303	0.00
4.8	Spin Klin spine body 2.7	2502 6227	710101-000078	0.00
4.9	Cone Membrane	5006 0018Wrc	770104-000055	58.80



[Continued]

[*] For demonstration purposes only

Spare Parts Price List Valid as of Sep 2012

ARKAL 2" SPIN KLIN POLYPROPYLENE FILTER

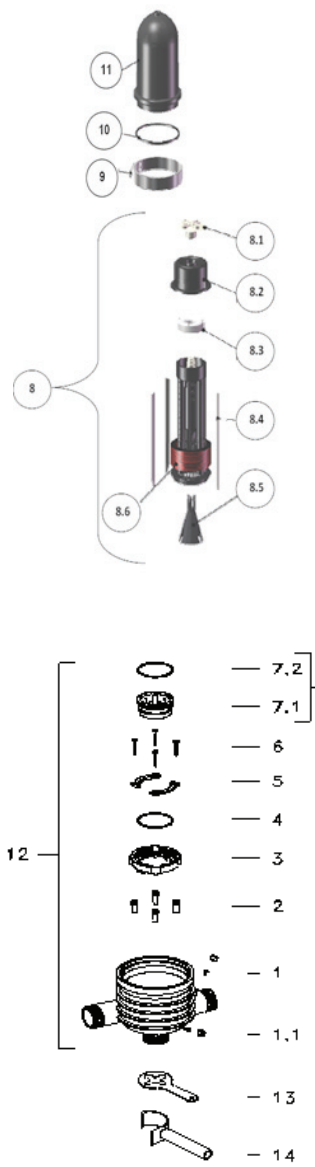
[Continued]

NO.	DESCRIPTION	OLD.CAT.NO	SAP. CAT.NO.	USD \$
5	2"-3" SK single disc set 400 Micron	2022 1040	700101-001187	80.00
	2"-3" SK single disc set 200 Micron	2022 1080	700101-001188	80.00
	2"-3" SK single disc set 130 Micron	2022 1120	700101-001176	80.00
	2"-3" SK single disc set 100 Micron	2022 1140	700101-001177	80.00
	2"-3" SK single disc set 70 Micron	2022 1070	700101-001184	80.00
	2"-3" SK single disc set 55 Micron	2022 1200	700101-001183	80.00
	2"-3" SK single disc set 40 Micron	2022 1400	700101-001189	80.00
	2"-3" SK single disc set 20 Micron	2022 1600	700101-001182	80.00
	2"-3" SK single disc set 200 Micron nylon	2022 2080	700101-000020	150.00
	2"-3" SK single disc set 130 Micron nylon	2022 2120	700101-000021	175.00
	2"-3" SK single disc set 100 Micron nylon	2022 2140	700101-000022	175.00
	2"-3" SK single disc set 70 Micron nylon	2022 2070	700101-000019	175.00
	2"-3" SK single disc set 55 Micron nylon	2022 2200	700101-001190	210.00
	2"-3" SK single disc set 20 Micron nylon	2022 2600	700101-000023	240.00
6	O-ring 2x234	5003 2234Wrc	770102-000032	2.40
7	Spine adapter	2503 0324	710101-000082	12.60
8	O-ring 2x237	5003 2237Dw	770102-000035	4.30
9	Complete adapter	2234 0324	700190-000117	21.00
10	2" Spin Klin body victaulic out	2500 6252	710101-000037	0.00
	2" Spin Klin body complete	2224 6253	700190-000097	158.60
	Butterfly nut wrench	5076 0028	760109-000055	20.00

Spare Parts Price List Valid as of Sep 2012

2" SPIN KLIN MODEL 2

NO.	DESCRIPTION	OLD.CAT.NO	SAP. CAT.NO.	USD \$
1	Gauge port seal	5006 0004	770104-000045	4.40
1.1	Gauge port nut	2511 0103	710101-000148	1.80
2	Spine seat legs	2530 0204	710101-001054	6.70
3	Spine threaded connector	2506 0222	710101-001051	17.90
4	Spine seat o-ring 2-146	5003 2146	770102-000379	1.80
5	Arc shaped fixture	2530 0206	710101-001055	5.60
6	Fastening bolts	5040 1025	760101-000032	1.20
7	Spine seat assembly	2199 0124		
7.1	Spine seat	2503 0221	710101-001049	12.60
7.2	O-ring 76x4	5003 7604	770101-000019	3.80
8	Spin Klin spine complex w/o discs	2199 1002	700101-001193	276.00
	2"-3" SK single filt. elem. 400 Micron	2123 1040	700101-000110	351.00
	2"-3" SK single filt. elem. 200 Micron	2123 1080	700101-000115	351.00
	2"-3" SK single filt. elem. 130 Micron	2123 1120	700101-000271	351.00
	2"-3" SK single filt. elem. 100 Micron	2123 1140	700101-000120	351.00
	2"-3" SK single filt. elem. 70 Micron	2123 1070	700101-000112	351.00
	2"-3" SK single filt. elem. 55 Micron	2123 1200	700101-000123	351.00
	2"-3" SK single filt. elem. 40 Micron	2123 1400	700101-000088	351.00
	2"-3" SK single filt. elem. 20 Micron	2123 1600	700101-000127	351.00
8.1	Butterfly nut	2506 0224	710101-000435	10.20
8.2	Tightening cylinder	2506 0226	710101-000106	20.00
8.3	Piston	2530 0217	710101-000436	12.60
8.4	Abrasion shield	5076 0009	760109-000045	2.30
8.5	Cone Membrane	5006 0008	770104-000065	45.20



(Continued)

2" SPIN KLIN MODEL 2

(Continued)

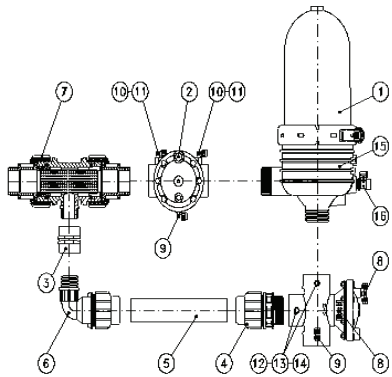
NO.	DESCRIPTION	OLD.CAT.NO	SAP. CAT.NO.	USD \$
8.6	2"-3" SK single Disc set 400 Micron	2022 1040	700101-001187	80.00
	2"-3" SK single Disc set 200 Micron	2022 1080	700101-001188	80.00
	2"-3" SK single Disc set 130 Micron	2022 1120	700101-001176	80.00
	2"-3" SK single Disc set 100 Micron	2022 1140	700101-001177	80.00
	2"-3" SK single Disc set 70 Micron	2022 1070	700101-001184	80.00
	2"-3" SK single Disc set 55 Micron	2022 1200	700101-001183	80.00
	2"-3" SK single Disc set 40 Micron	2022 1400	700101-001189	80.00
	2"-3" SK single Disc set 20 Micron	2022 1600	700101-001182	80.00
	2"-3" SK single Disc set 200 Micron Nylon	2022 2080	700101-000020	150.00
	2"-3" SK single Disc set 130 Micron Nylon	2022 2120	700101-000021	175.00
	2"-3" SK single Disc set 100 Micron Nylon	2022 2140	700101-000022	175.00
	2"-3" SK single Disc set 70 Micron Nylon	2022 2070	700101-000019	175.00
	2"-3" SK single Disc set 55 Micron Nylon	2022 2200	700101-001190	210.00
	2"-3" SK single Disc set 20 Micron Nylon	2022 2600	700101-000023	240.00
9	Clamp	5042 0030	760108-000002	47.40
10	Hydraulic seal	5005 0002	770104-000248	7.60
11	Filter cover	2501 0210	710101-000906	67.20
	Transparent cover (*)	2501 9220	710101-000899	67.20
12	2" Spin Klin body victaulic out complex	2226 1122		
	2" Spin Klin body threaded out complex	2226 1022	700190-003466	0.00
13	Butterfly nut wrench	5076 0028	760109-000055	20.00
14	Spine wrench	5076 0019	760109-000131	67.50
	Spine socket wrench	5076 0097	760109-000080	200.60

(*) For Demonstration purposes only

2" COMPACT SPIN KLIN

With Metal Valves

NO.	DESCRIPTION	OLD.CAT.NO	SAP. CAT.NO.	USD \$
1	Filter cover	2501 0210	710101-000906	67.20
	Transparent cover*	2501 9220		
2	2"x2" Dorot backflush valve	5060 1211	730102-000005	432.60
	2"x2" Bermad backflush valve	5062 3222	730102-000140	731.90
3	1¼" Polypropylen coupling	5022 5011	780101-000335	6.70
4	40mm x 2" Male connecto	5022 5042	780101-000340	23.10
5	40mm Polyethylene pipe	2253 2265	710103-000196	9.70
6	90° Elbow 40mm x 1¼" Male	5022 3041	780101-000303	32.60
7	2" Diverter filter	1899 0051	700190-000001	372.80
8	8mm x ¼" x 8mm Tefen tee	5078 0028	720501-000136	4.90
9	¼" x 8mm Tefen angle	5078 0036	720501-000139	3.80
10	¼" Finger filter	5052 0002	730110-000001	12.60
11	¼" x 8mm Tefen angle	5078 0034	720501-000137	2.30
12	⅝" Tefen double nipple	5078 0064	720501-000148	3.50
13	Gauge port nut	2511 0103	710101-000148	1.80
14	Gauge port seal	5006 0004	770104-000045	4.40
15	2" Spin Klin body threaded out complex	2224 0254	700190-000094	125.00



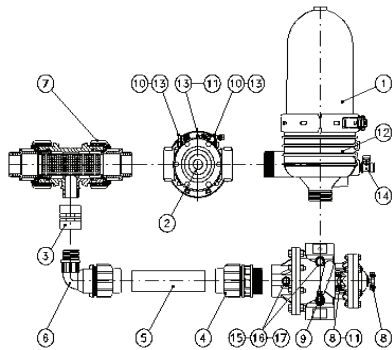
(*) For Demonstration purposes only

Spare Parts Price List Valid as of Sep 2012

2" COMPACT SPIN KLIN

With Polymeric valves

NO.	DESCRIPTION	OLD.CAT.NO	SAP. CAT.NO.	USD \$
1	Filter cover with stopper	2501 0210	710101-000906	67.20
	Transparent cover with stopper (*)	2501 9220		
2	2X2" polymeric valve	5062 0224	730102-000169	331.80
3	1¼" Polypropylen coupling	5022 5011	780101-000335	6.70
4	40Mm x 2" Male connector	5022 5042	780101-000340	23.10
5	40Mm polyethylene pipe	2253 2265	710103-000196	9.70
6	90° Elbow 40mm x 1¼" Male	5022 3041	780101-000303	32.60
7	2" Diverter filter	1899 0051	700190-000001	372.80
8	8Mm x ⅛" x 8mm Tefen tee	5078 0026	720501-000135	4.90
9	¼" X 8mm Tefen angle	5078 0036	720501-000139	3.80
10	¼" Finger filter	5052 0002	730110-000001	12.60
11	⅛" Male/female adaptor	5078 0066		
12	2" Spin Klin body threaded out complex	2224 0254	700190-000094	125.00
13	⅛" X 8mm Tefen angle	5078 0034	720501-000137	2.30
14	¼" X ½" ball tap	5054 0212	730104-000217	15.80
15	¼" Tefen double nipple	5078 0064	720501-000148	3.50
16	Gauge port nut	2511 0103	710101-000148	1.80
17	Gauge port seal	5006 0004	770104-000045	4.40

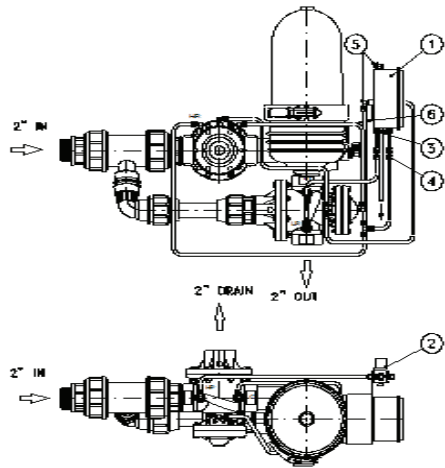


(*) For demonstration purposes only

Spare Parts Price List Valid as of Sep 2012

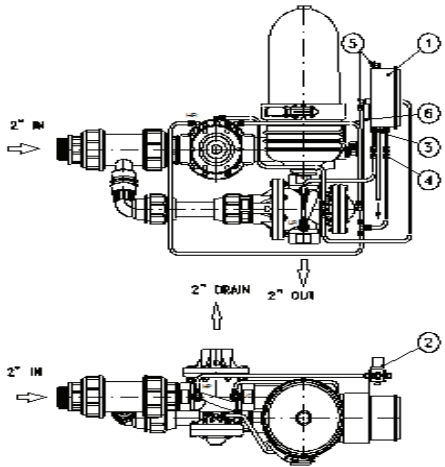
DC FT-1 DP CONTROLLER FOR 2" COMPACT SPIN KLIN

NO.	DESCRIPTION	OLD.CAT.NO	SAP. CAT.NO.	USD \$
1	Filtron FT-1 complete	1907 DC01g2ti	700103-000638	759.20
1.1	Filtron FT- 1	5073 0023	720101-000008	546.00
1.2	1.5 Volt battery	5072 0014	720207-000003	9.40
2	Bac-sol 12v DC	5074 1123	720103-000345	141.80
3	Sensor Dp	5073 6014	720104-000002	86.00
4	Tefen connector 8mm x 6mm	5078 0001	720501-000128	2.00
5	Tefen angle 8mm x 1/8"	5078 0034	720501-000137	2.30
6	Tefen tee 8mm x 8mm x 1/8"	5078 0046	720501-000141	2.80
7	Stainless steel panel	5076 0065	760109-000069	16.80



AC FT-1 DP CONTROLLER FOR 2" COMPACT SPIN KLIN

NO.	DESCRIPTION	OLD.CAT.NO	SAP. CAT.NO.	USD \$
1	Filtron FT-1 Complete	1910 AC01B2TI	700103-000774	868.40
1.1	Filtron FT - 1	5073 0031	720101-000010	638.40
2	Gem - Sol 24v AC	5074 2375	720103-000088	141.80
3	Sensor DP	5073 6014	720104-000002	86.00
4	Tefen Connector 8mm x 6mm	5078 0001	720501-000128	2.00
5	Tefen Angle 8mm x 1/8"	5078 0034	720501-000137	2.30
6	Stainless steel panel	5076 0065	760109-000069	16.80



3" SPIN KLIN MODEL 2

NO.	DESCRIPTION	OLD.CAT.NO	SAP. CAT.NO.	USD \$
1	Filter body	2500 0303	710101-000020	0.00
2	Spine wrench	5076 0019	760109-000131	67.50
3	Butterfly nut wrench	5076 0028	760109-000055	20.00
4	Gauge port seal	5006 0004	770104-000045	4.40
5	Gauge port nut	2511 0103	710101-000148	1.80
6	O-ring 2-237	5003 2237	770102-000034	3.50
7	Spine adapter	2503 0324	710101-000082	12.60
8	O-ring 2-234	5003 2234	770102-000295	
9	Cone Membrane	5006 0008	770104-000065	45.20
10	2"-3" SK single disc set 400 Micron	2022 1040	700101-001187	80.00
	2"-3" SK single disc set 200 Micron	2022 1080	700101-001188	80.00
	2"-3" SK single disc set 130 Micron	2022 1120	700101-001176	80.00
	2"-3" SK single disc set 100 Micron	2022 1140	700101-001177	80.00
	2"-3" SK single disc set 70 Micron	2022 1070	700101-001184	80.00
	2"-3" SK single disc set 55 Micron	2022 1200	700101-001183	80.00
	2"-3" SK single disc set 40 Micron	2022 1400	700101-001189	80.00
	2"-3" SK single disc set 20 Micron	2022 1600	700101-001182	80.00
	2''-3" SK single disc set 200 Micron nylon	2022 2080	700101-000020	150.00
	2''-3" Sk single disc set 130 Micron nylon	2022 2120	700101-000021	175.00
	2''-3" Sk single disc set 100 Micron nylon	2022 2140	700101-000022	175.00
	2''-3" Sk single disc set 70 Micron nylon	2022 2070	700101-000019	175.00
	2''-3" Sk single disc set 55 Micron nylon	2022 2200	700101-001190	210.00
	2''-3" Sk single disc set 20 Micron nylon	2022 2600	700101-000023	240.00



(Continued)

3" SPIN KLIN MODEL 2

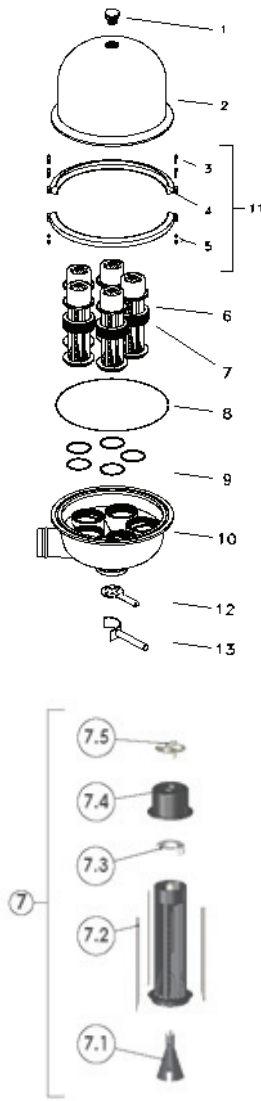
[Continued]

NO.	DESCRIPTION	OLD.CAT.NO	SAP. CAT.NO.	USD \$
11	Abrasion shield (single)	5076 0009	760109-000045	2.30
12	Piston	2530 0217	710101-000436	12.60
13	Tightening cylinder	2506 0226	710101-000106	20.00
14	Butterfly nut	2506 0224	710101-000435	10.20
15	Clamp	5042 0030	760108-000002	47.40
16	Hydraulic seal	5005 0002	770104-000248	7.60
17	Filter cover	2501 0210	710101-000906	67.20
	Transparent cover (*)	2501 9220	710101-000899	67.20
18	Filter body complex	2234 1004	700190-001157	426.30
19	Complex adapter	2234 0324	700190-000117	21.00
20	Spin Klin spine complex w/o discs	2199 1002	700101-001193	276.00
	2''-3" SK single filt. elem. 400 Micron	2123 1040	700101-000110	351.00
	2''-3" SK single filt. elem. 200 Micron	2123 1080	700101-000115	351.00
	2''-3" SK single filt. elem. 130 Micron	2123 1120	700101-000271	351.00
	2''-3" SK single filt. elem. 100 Micron	2123 1140	700101-000120	351.00
	2''-3" SK single filt. elem. 70 Micron	2123 1070	700101-000112	351.00
	2''-3" SK single filt. elem. 55 Micron	2123 1200	700101-000123	351.00
	2''-3" SK single filt. elem. 40 Micron	2123 1400	700101-000088	351.00
	2''-3" SK single filt. elem. 20 Micron	2123 1600	700101-000127	351.00
	Spine socket wrench	5076 0097	760109-000080	200.60

(*) For Demonstration purposes only

4" SPIN KLIN GALAXY ALUMINUM

NO.	DESCRIPTION	OLD.CAT.NO	SAP. CAT.NO.	USD \$
1	1" Plug	5019 0114	780101-000114	3.50
2	Filter cover	5035 0003Aht	710105-000003	1,350.30
3	M10x140 stainless steel bolt (single unit)	5040 0140	760101-000007	7.40
4	Clamp (half)	5042 0453	760108-000025	181.70
5	M10x30 brass nut (single unit)	5040 8140	760102-000041	6.40
6	2"-3" SK single disc set 400 Micron	2022 1040	700101-001187	80.00
	2"-3" SK single disc set 200 Micron	2022 1080	700101-001188	80.00
	2"-3" SK single disc set 130 Micron	2022 1120	700101-001176	80.00
	2"-3" SK single disc set 100 Micron	2022 1140	700101-001177	80.00
	2"-3" SK single disc set 70 Micron	2022 1070	700101-001184	80.00
	2"-3" SK single disc set 55 Micron	2022 1200	700101-001183	80.00
	2"-3" SK single disc set 40 Micron	2022 1400	700101-001189	80.00
	2"-3" SK single disc set 20 Micron	2022 1600	700101-001182	80.00
	2"-3" SK single disc set 200 Micron nylon	2022 2080	700101-000020	150.00
	2"-3" SK single disc set 130 Micron nylon	2022 2120	700101-000021	175.00
	2"-3" SK single disc set 100 Micron nylon	2022 2140	700101-000022	175.00
	2"-3" SK single disc set 70 Micron nylon	2022 2070	700101-000019	175.00
	2"-3" SK single disc set 55 Micron nylon	2022 2200	700101-001190	210.00
	2"-3" SK single disc set 20 Micron nylon	2022 2600	700101-000023	240.00



[Continued]

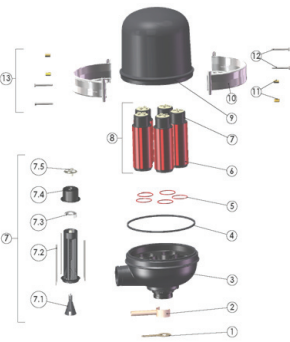
4" SPIN KLIN GALAXY ALUMINUM

[Continued]

NO.	DESCRIPTION	OLD.CAT.NO	SAP. CAT.NO.	USD \$
7	Spin Klin spine complex	2199 1002	700101-001193	276.00
7.1	Cone Membrane	5006 0008	770104-000065	45.20
7.2	Abrasion shield	5076 0009	760109-000045	2.30
7.3	Piston	2530 0217	710101-000436	12.60
7.4	Tightening cylinder	2506 0226	710101-000106	20.00
7.5	Butterfly nut	2506 0224	710101-000435	10.20
8	O-ring seal 2-461 (405x7)	5003 2461	770102-000053	19.30
9	O-ring seal 2-243 (104x3.53)	5003 2243	770102-000038	3.50
10	Filter housing	5035 0001Aht	710105-000001	1,794.50
11	Complex clamp set	2253 1453	700190-000267	444.20
12	Butterfly nut wrench	5076 0028	760109-000055	20.00
13	Spine wrench	5076 0019	760109-000131	67.50
	Spine socket wrench	5076 0097	760109-000080	200.60

4" SPIN KLIN GALAXY POLYPROPYLENE

NO.	DESCRIPTION	OLD.CAT.NO	SAP. CAT.NO.	USD \$
1	Butterfly nut wrench	5076 0028	760109-000055	20.00
2	Spine wrench	5076 0019	760109-000131	67.50
3	Filter housing	2249 1005	700190-000186	1,723.10
4	Seal	5006 0012	770104-000049	30.50
5	Flat injected polymeric seal	2507 0408	710101-000136	1.50
5.1	Butterfly nut	2506 0224	710101-000435	10.20
5.3	Piston	2530 0217	710101-000436	12.60
6	2"-3" SK single disc set 400 Micron	2022 1040	700101-001187	80.00
	2"-3" SK single disc set 200 Micron	2022 1080	700101-001188	80.00
	2"-3" SK single disc set 130 Micron	2022 1120	700101-001176	80.00
	2"-3" SK single disc set 100 Micron	2022 1140	700101-001177	80.00
	2"-3" SK single disc set 70 Micron	2022 1070	700101-001184	80.00
	2"-3" SK single disc set 55 Micron	2022 1200	700101-001183	80.00
	2"-3" SK single disc set 40 Micron	2022 1400	700101-001189	80.00
	2"-3" SK single disc set 20 Micron	2022 1600	700101-001182	80.00
	2"-3" SK single disc set 200 Micron nylon	2022 2080	700101-000020	150.00
	2"-3" SK single disc set 130 Micron nylon	2022 2120	700101-000021	175.00
	2"-3" SK single disc set 100 Micron nylon	2022 2140	700101-000022	175.00
	2"-3" SK single disc set 70 Micron nylon	2022 2070	700101-000019	175.00
	2"-3" SK single disc set 55 Micron nylon	2022 2200	700101-001190	210.00
	2"-3" SK single disc set 20 Micron nylon	2022 2600	700101-000023	240.00



[Continued]

4" SPIN KLIN GALAXY POLYPROPYLENE

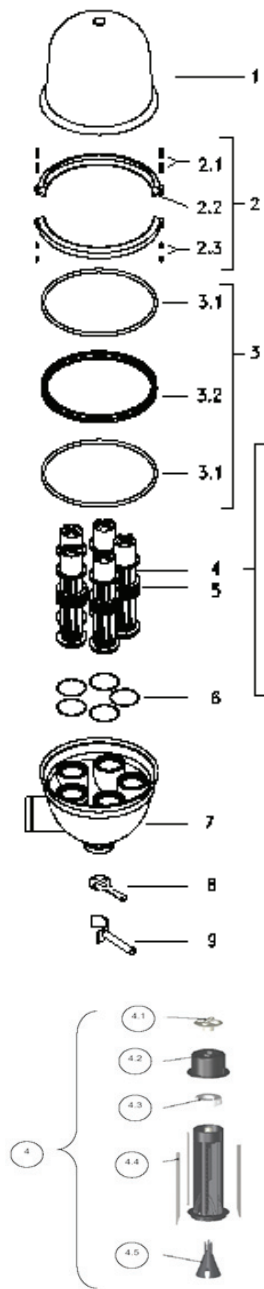
[Continued]

NO.	DESCRIPTION	OLD.CAT.NO	SAP. CAT.NO.	USD \$
7	Spin Klin spine complex	2199 1002	700101-001193	276.00
7.1	Cone Membrane	5006 0008	770104-000065	45.20
7.2	Abrasion shield	5076 0009	760109-000045	2.30
7.3	Piston	2530 0217	710101-000436	12.60
7.4	Tightening cylinder	2506 0226	710101-000106	20.00
8	Spin Klin spine complex with discs	2123 1120	700101-000271	351.00
9	Filter cover	2501 0402	710103-000371	925.10
10	Clamp (half)	5042 0044	760108-000120	223.70
11	M10x30 brass nut (single unit)	5040 8140	760102-000041	6.40
12	M10x100 ss bolt (single unit)	5040 3410	760101-000256	9.70
13	Complex clamp set	2253 0044	700190-000203	490.40
	Spine socket wrench	5076 0097	760109-000080	200.60

4" SPIN KLIN GALAXY STAINLESS STEEL

Short Inlet

NO.	DESCRIPTION	OLD.CAT.NO	SAP. CAT.NO.	USD \$
1	Filter cover	5036 0013L	710105-000007	779.10
2	Clamp complex	2253 2444L	700190-000281	322.40
2.1	Bolt	5040 0160	760101-000011	9.40
2.2	Arch	5042 1444L	760108-000030	121.80
2.3	Nut	5040 8140	760102-000041	6.40
3	Seal complex	2253 0407	700190-000226	67.20
3.1	O-ring seal 2-461 (405x7)	5003 2461	770102-000053	19.30
3.2	Seal support ring	2530 0407	710101-000173	25.20
4	Spin Klin spine complex	2199 1002	700101-001193	276.00
4.1	Butterfly nut	2506 0224	710101-000435	10.20
4.2	Tightening cylinder	2506 0226	710101-000106	20.00
4.3	Piston	2530 0217	710101-000436	12.60
4.4	Abrasion shield	5076 0009	760109-000045	2.30
4.5	Cone Membrane	5006 0008	770104-000065	45.20



[Continued]

4" SPIN KLIN GALAXY STAINLESS STEEL

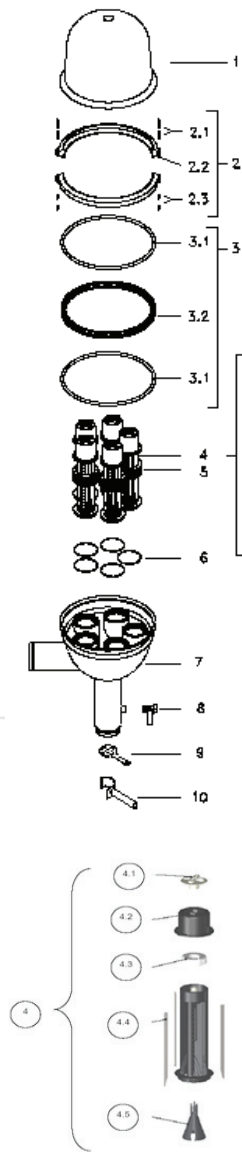
Short Inlet (Continued)

NO.	DESCRIPTION	OLD.CAT.NO	SAP. CAT.NO.	USD \$
5	2"-3" SK single disc set 400 Micron	2022 1040	700101-001187	80.00
	2"-3" SK single disc set 200 Micron	2022 1080	700101-001188	80.00
	2"-3" SK single disc set 130 Micron	2022 1120	700101-001176	80.00
	2"-3" SK single disc set 100 Micron	2022 1140	700101-001177	80.00
	2"-3" SK single disc set 70 Micron	2022 1070	700101-001184	80.00
	2"-3" SK single disc set 55 Micron	2022 1200	700101-001183	80.00
	2"-3" SK single disc set 40 Micron	2022 1400	700101-001189	80.00
	2"-3" SK single disc set 20 Micron	2022 1600	700101-001182	80.00
	2"-3" SK single disc set 200 Micron nylon	2022 2080	700101-000020	150.00
	2"-3" SK single disc set 130 Micron nylon	2022 2120	700101-000021	175.00
	2"-3" SK single disc set 100 Micron nylon	2022 2140	700101-000022	175.00
	2"-3" SK single disc set 70 Micron nylon	2022 2070	700101-000019	175.00
	2"-3" SK single disc set 55 Micron nylon	2022 2200	700101-001190	210.00
	2"-3" SK single disc set 20 Micron nylon	2022 2600	700101-000023	240.00
6	O-ring	5003 1043	770101-000013	3.30
7	Filter housing short inlet	5036 0111	700190-001138	1,461.60
8	Butterfly nut wrench	5076 0028	760109-000055	20.00
9	Spine wrench	5076 0019	760109-000131	67.50
	Spine socket wrench	5076 0097	760109-000080	200.60

4" SPIN KLIN GALAXY STAINLESS STEEL

Long Inlet

NO.	DESCRIPTION	OLD.CAT.NO	SAP. CAT.NO.	USD \$
1	Filter cover	5036 0013L	710105-000007	779.10
2	Clamp complex	2253 2444L	700190-000281	322.40
2	Bolt	5040 0160	760101-000011	9.40
2.2	Arc	5042 1444L	760108-000030	121.80
2.3	Nut	5040 8140	760102-000041	6.40
3	Seal complex	2253 0407	700190-000226	67.20
3.1	Seal	5003 2461	770102-000053	19.30
3.2	Seal support ring	2530 0407	710101-000173	25.20
4	Spin Klin spine complex	2199 1002	700101-001193	276.00
4.1	Butterfly nut	2506 0224	710101-000435	10.20
4.2	Tightening cylinder	2506 0226	710101-000106	20.00
4.3	Piston	2530 0217	710101-000436	12.60
4.4	Abrasion shield	5076 0009	760109-000045	2.30
4.5	Cone Membrane	5006 0008	770104-000065	45.20



(Continued)

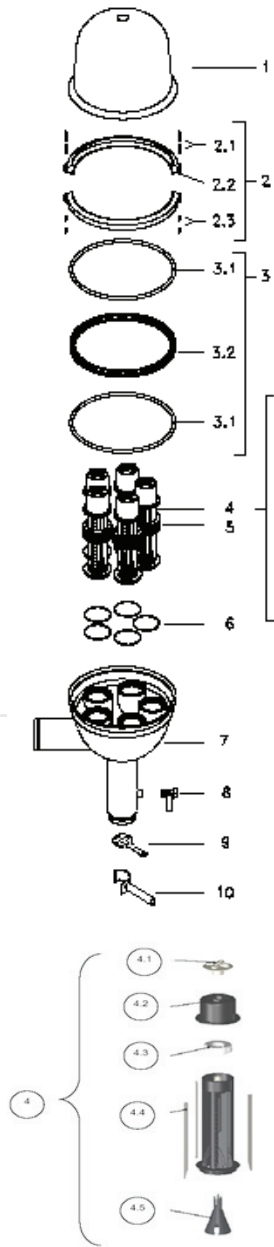
4" SPIN KLIN GALAXY STAINLESS STEEL

Long Inlet (Continued)

NO.	DESCRIPTION	OLD.CAT.NO	SAP. CAT.NO.	USD \$
5	2"-3" SK single disc set 400 Micron	2022 1040	700101-001187	80.00
	2"-3" SK single disc set 200 Micron	2022 1080	700101-001188	80.00
	2"-3" SK single disc set 130 Micron	2022 1120	700101-001176	80.00
	2"-3" SK single disc set 100 Micron	2022 1140	700101-001177	80.00
	2"-3" SK single disc set 70 Micron	2022 1070	700101-001184	80.00
	2"-3" SK single disc set 55 Micron	2022 1200	700101-001183	80.00
	2"-3" SK single disc set 40 Micron	2022 1400	700101-001189	80.00
	2"-3" SK single disc set 20 Micron	2022 1600	700101-001182	80.00
	2"-3" SK single disc set 200 Micron nylon	2022 2080	700101-000020	150.00
	2"-3" SK single disc set 130 Micron nylon	2022 2120	700101-000021	175.00
	2"-3" SK single disc set 100 Micron nylon	2022 2140	700101-000022	175.00
	2"-3" SK single disc set 70 Micron nylon	2022 2070	700101-000019	175.00
	2"-3" SK single disc set 55 Micron nylon	2022 2200	700101-001190	210.00
	2"-3" SK single disc set 20 Micron nylon	2022 2600	700101-000023	240.00
6	O-ring	5003 1043	770101-000013	3.30
7	Filter housing long inlet	5036 1365	700190-001141	1,847.00
8	¾" Ball valve	5054 0012		
9	Butterfly nut wrench	5076 0028	760109-000055	20.00
10	Spine wrench	5076 0019	760109-000131	67.50

4" SPIN KLIN GALAXY CARBON STEEL COATED

NO.	DESCRIPTION	OLD.CAT.NO	SAP. CAT.NO.	USD \$
1	Filter cover		760109-000131	67.50
2	Clamp complex	2253 2444	700190-003467	300.30
2.1	Bolt	5040 0160	760101-000011	9.40
2.2	Arc	5042 1444		
2.3	Nut	5040 8140	760102-000041	6.40
3	Seal complex	2253 0407	700190-000226	67.20
3.1	Seal	5003 2461	770102-000053	19.30
3.2	Seal support ring	2530 0407	710101-000173	25.20
4	Spin Klin spine complex	2199 1002	700101-001193	276.00
4.1	Butterfly nut	2506 0224	710101-000435	10.20
4.2	Tightening cylinder	2506 0226	710101-000106	20.00
4.3	Piston	2530 0217	710101-000436	12.60
4.4	Abrasion shield	5076 0009	760109-000045	2.30
4.5	Cone Membrane	5006 0008	770104-000065	45.20



[Continued]

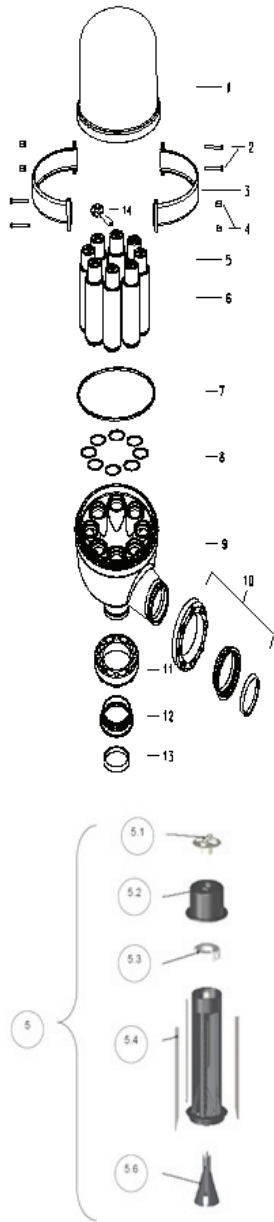
4" SPIN KLIN GALAXY CARBON STEEL COATED

[Continued]

NO.	DESCRIPTION	OLD.CAT.NO	SAP. CAT.NO.	USD \$
5	2"-3" SK single disc set 400 Micron	2022 1040	700101-001187	80.00
	2"-3" SK single disc set 200 Micron	2022 1080	700101-001188	80.00
	2"-3" SK single disc set 130 Micron	2022 1120	700101-001176	80.00
	2"-3" SK single disc set 100 Micron	2022 1140	700101-001177	80.00
	2"-3" SK single disc set 70 Micron	2022 1070	700101-001184	80.00
	2"-3" SK single disc set 55 Micron	2022 1200	700101-001183	80.00
	2"-3" SK single disc set 40 Micron	2022 1400	700101-001189	80.00
	2"-3" SK single disc set 20 Micron	2022 1600	700101-001182	80.00
	2"-3" SK single disc set 200 Micron nylon	2022 2080	700101-000020	150.00
	2"-3" SK single disc set 130 Micron nylon	2022 2120	700101-000021	175.00
	2"-3" SK single disc set 100 Micron nylon	2022 2140	700101-000022	175.00
	2"-3" SK single disc set 70 Micron nylon	2022 2070	700101-000019	175.00
	2"-3" SK single disc set 55 Micron nylon	2022 2200	700101-001190	210.00
	2"-3" SK single disc set 20 Micron nylon	2022 2600	700101-000023	240.00
6	O-ring	5003 1043	770101-000013	3.30
7	Filter housing	5035 0111	700190-003483	934.50
8	Butterfly nut wrench	5076 0028	760109-000055	20.00
9	Spine wrench	5076 0019	760109-000131	67.50

6" SPIN KLIN GALAXY POLYPROPYLENE

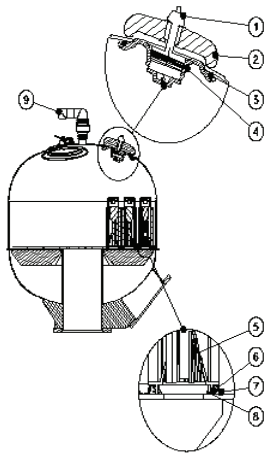
NO.	DESCRIPTION	OLD.CAT.NO	SAP. CAT.NO.	USD \$
1	Filter cover	2501 0603	710103-000372	1,205.40
2	M10x100 ss bolt (single unit)	5040 3410	760101-000256	9.70
3	Clamp (half)	5042 0046	760108-000012	312.90
4	M10x30 brass nut (single unit)	5040 8140	760102-000041	6.40
5	Spin Klin spine complex	2199 1002	700101-001193	276.00
5.1	Butterfly nut	2506 0224	710101-000435	10.20
5.2	Tightening cylinder	2506 0226	710101-000106	20.00
5.3	Piston	2530 0217	710101-000436	12.60
5.4	Abrasion shield	5076 0009	760109-000045	2.30
5.6	Cone Membrane	5006 0008	770104-000065	45.20
6	2"-3" SK single disc set 400 Micron	2022 1040	700101-001187	80.00
	2"-3" SK single disc set 200 Micron	2022 1080	700101-001188	80.00
	2"-3" SK single disc set 130 Micron	2022 1120	700101-001176	80.00
	2"-3" SK single disc set 100 Micron	2022 1140	700101-001177	80.00
	2"-3" SK single disc set 70 Micron	2022 1070	700101-001184	80.00
	2"-3" SK single disc set 55 Micron	2022 1200	700101-001183	80.00
	2"-3" SK single disc set 40 Micron	2022 1400	700101-001189	80.00
	2"-3" SK single disc set 20 Micron	2022 1600	700101-001182	80.00
	2"-3" SK single disc set 200 Micron nylon	2022 2080	700101-000020	150.00
	2"-3" SK single disc set 130 Micron nylon	2022 2120	700101-000021	175.00
	2"-3" SK single disc set 100 Micron nylon	2022 2140	700101-000022	175.00
	2"-3" SK single disc set 70 Micron nylon	2022 2070	700101-000019	175.00
	2"-3" SK single disc set 55 Micron nylon	2022 2200	700101-001190	210.00
	2"-3" SK single disc set 20 Micron nylon	2022 2600	700101-000023	240.00
7	Seal	5005 0006	770104-000016	36.80
8	Flat seal	5006 0014	770104-000051	1.50
9	Filter housing	2241 1001	700190-000130	3,441.90
10	6" Ak flange	2253 0625	700190-000238	111.30
11	6" Loose flange	2510 0625	710101-000900	77.70
12	Cone ring	2507 0602	710101-000861	16.80
13	Gasket 6" style 90	5005 2016	770104-000036	16.80
14	Butterfly nut wrench	5076 0028	760109-000055	20.00
	Spine wrench	5076 0019	760109-000131	67.50
	Spine socket wrench	5076 0097	760109-000080	200.60



Spare Parts Price List Valid as of Sep 2012

12" SPIN KLIN GALAXY SUPER FLOW

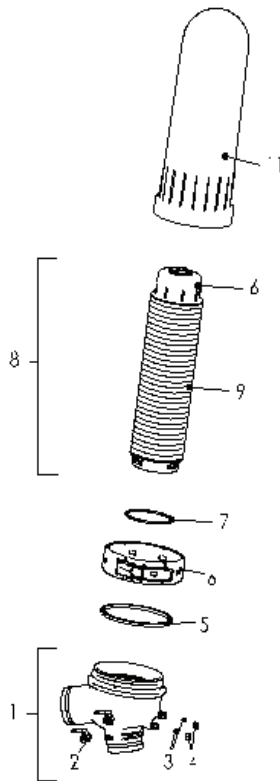
NO.	DESCRIPTION	OLD.CAT.NO	SAP. CAT.NO.	USD \$
1	AGF tightening screw	2820 0038	710101-000404	7.00
2	Extended bridge	2820 0034	710103-000379	14.70
3	Cover	2820 0322	710103-000382	56.70
4	AGF cover seal	5005 0548	770104-000020	26.30
5	Sk spine	2199 1002	700101-001193	276.00
6	Spine base	2503 0404	710101-000086	11.60
7	Spine base o-ring holding	2507 1202	710101-000142	8.20
8	Spine base o-ring	5003 2235	770102-000033	3.50
9	2" Air release valve	5048 0206	730108-000040	226.80
	Spine socket wrench	5076 0097	760109-000080	200.60



Spare Parts Price List Valid as of Sep 2012

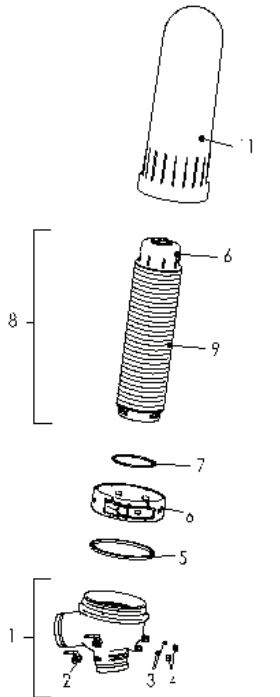
3" SPIN KLIN APOLLO ANGLE

NO.	DESCRIPTION	OLD.CAT.NO	SAP. CAT.NO.	USD \$
1	3" Angle body complete	2237 1011	700190-000127	178.50
2	1/2" X 1/4" Ball tap	5054 0212	730104-000217	15.80
3	Gauge port seal	5006 0004	770104-000045	4.40
4	Gauge port nut	2511 0103	710101-000148	1.80
5	Hydraulic seal	5005 0004	770104-000254	10.80
6	Clamp	5042 0060	760108-000122	109.20
7	O ring 2-355 nitrile	5002 2355	770102-000023	3.50
8	3"-4" SK filter element	2140 4120	700101-000218	962.00
9	3"-4" SK apollo single disc set 400 Micron	2033 4040	700101-000045	195.00
	3"-4" SK apollo single disc set 200 Micron	2033 4080	700101-000046	195.00
	3"-4" SK apollo single disc set 130 Micron	2033 4120	700101-000047	195.00
	3"-4" SK apollo single disc set 100 Micron	2033 4140	700101-000048	195.00
	3"-4" SK apollo single disc set 55 Micron	2033 4200	700101-000049	195.00
	3"-4" SK apollo single disc set 20 Micron	2033 4600	700101-000050	195.00
10	SK spine Model 4	2199 1040	700101-000262	766.00
11	Apollo filter cover	2501 0602	710103-004513	210.00



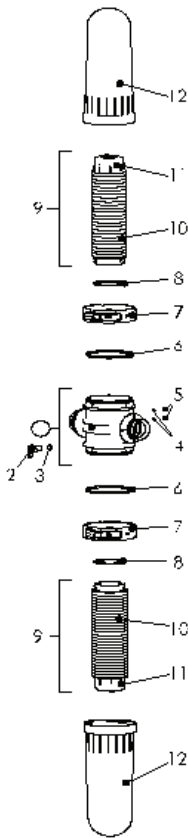
4" SPIN KLIN APOLLO ANGLE

NO.	DESCRIPTION	OLD.CAT.NO	SAP. CAT.NO.	USD \$
1	4" Angle body complete	2247 1011	700190-000144	197.40
2	1/2" X 1/4" ball tap	5054 0212	730104-000217	15.80
3	Gauge port seal	5006 0004	770104-000045	4.40
4	Gauge port nut	2511 0103	710101-000148	1.80
5	Hydraulic seal	5005 0004	770104-000254	10.80
6	Clamp	5042 0060	760108-000122	109.20
7	O ring 2-355 nitrile	5002 2355	770102-000023	3.50
8	3"-4" SK Filter element	2140 4120	700101-000218	962.00
9	3"-4" SK Apollo single Disc set 400 Micron	2033 4040	700101-000045	195.00
	3"-4" SK Apollo single Disc set 200 Micron	2033 4080	700101-000046	195.00
	3"-4" SK Apollo single Disc set 130 Micron	2033 4120	700101-000047	195.00
	3"-4" SK Apollo single Disc set 100 Micron	2033 4140	700101-000048	195.00
	3"-4" SK Apollo single Disc set 55 Micron	2033 4200	700101-000049	195.00
	3"-4" SK Apollo single Disc set 20 Micron	2033 4600	700101-000050	195.00
10	SK spine Model 4	2199 1040	700101-000262	766.00
11	Apollo Filter cover	2501 0602	710103-004513	210.00



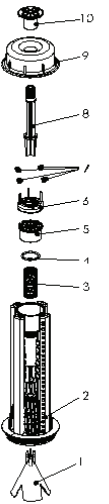
4" SPIN KLIN APOLLO TWIN

NO.	DESCRIPTION	OLD.CAT.NO	SAP. CAT.NO.	USD \$
1	4" twin body complete	2200 0402	710103-000002	352.80
2	3/4" tap	5054 0112	730104-000231	17.90
3	O ring 2-231	5003 2311	770102-000043	2.60
4	Gauge port seal	5006 0004	770104-000045	4.40
5	Gauge port nut	2511 0103	710101-000148	1.80
6	Hydraulic seal	5005 0004	770104-000254	10.80
7	Clamp	5042 0060	760108-000122	109.20
8	O ring 2-355 nitrile	5002 2355	770102-000023	3.50
9	3"-4" SK Filter element	2140 4120	700101-000218	962.00
10	3"-4" SK Apollo single Disc set 400 Micron	2033 4040	700101-000045	195.00
	3"-4" SK Apollo single Disc set 200 Micron	2033 4080	700101-000046	195.00
	3"-4" SK Apollo single Disc set 130 Micron	2033 4120	700101-000047	195.00
	3"-4" SK Apollo single Disc set 100 Micron	2033 4140	700101-000048	195.00
	3"-4" SK Apollo single Disc set 55 Micron	2033 4200	700101-000049	195.00
	3"-4" SK Apollo single Disc set 20 Micron	2033 4600	700101-000050	195.00
11	SK spine Model 4	2199 1040	700101-000262	766.00
12	Apollo Filter cover	2501 0602	710103-004513	210.00



4" SPIN KLIN SPINE MODEL 4

NO.	DESCRIPTION	OLD.CAT.NO	SAP. CAT.NO.	USD \$
1	Cone Membrane	5006 0041	770104-000059	91.40
2	Spine body	2502 0304	710101-000075	578.60
3	Spring	5044 0030 188	760107-000097	41.00
4	O ring 2-237	5003 2327	770102-000044	2.90
5	Spring socket	2506 0406	710103-000375	15.80
6	Piston	2530 0418	710101-000179	10.20
7	Seal plug	5006 0007	770104-000047	2.50
8	Spring holder	2530 0420	710101-000180	13.70
9	Tightening cylinder	2506 0405	710101-000116	26.30
10	Tightening nut	2506 0402	710101-000114	12.60



AGF

NO.	DESCRIPTION	OLD.CAT.NO	SAP. CAT.NO.	USD \$
1	Locking nut	2820 0012	710103-000376	14.70
2	Seal 8 X 1205	5006 0482/5006 0485		
3	Inlet	2820 0014	710101-000393	43.10
4	Distribution plate	2820 0018	710103-000377	22.10
5	Upper sealing nut	2820 0010	710101-000391	14.70
6	Lower plug assembly	2248 0058	700190-000159	0.00
7	Mushroom support	2820 0030		
8	Lower sealing nut	2200 2810	710103-000016	0.00
9	Support for Musheroom	2200 2848	710103-000018	0.00
10	Pin	2820 0028	710101-000400	0.60
11	Pin washer holder -"flic"	5149 1001	760109-000110	0.00
12	Upper diffuser	2282 0022		
13	Upper diffuser complex	2248 0052	700190-000156	11.60
14	End cup	2820 0026	710101-000399	1.00
15	Drum	2820 0020	710103-000378	46.20
16	Lower diffuser	2282 0024		
17	Lower diffuser complex	2248 0054	700190-000157	10.10
18	Outlet	2820 0016	710101-000394	74.60
19	Filter body	5080 0480	720601-000044	0.00
20	Handle	5076 0248	760109-000108	13.70
21	Lower cover	2820 0324	710103-000383	0.00
22	O-ring 76x4	5003 7604	770101-000019	3.80
23	Lower plug	2820 0340	710101-000413	8.70
24	Lower cover complete	2248 0032	700190-000153	65.10
25	Cover seal	5005 0548	770104-000020	26.30
26	Bridge	2820 0036	710103-000380	14.30
27	Tightening screw	2820 0038	710101-000404	7.00
28	Bridge complex	2248 0056	700190-000158	0.00
29	Upper cover	2820 0322	710103-000382	56.70
30	O-ring 2-310	5003 2310	770102-000042	0.80

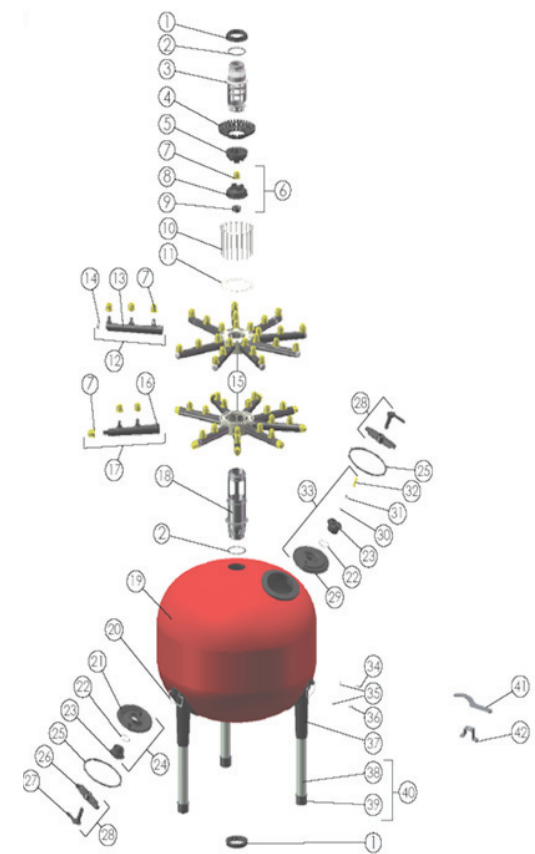
(Continued)

Spare Parts Price List Valid as of Sep 2012

AGF

(Continued)

NO.	DESCRIPTION	OLD.CAT.NO	SAP. CAT.NO.	USD \$
31	Spring	5044 0018	760107-000007	7.00
32	Vacuum release	2820 0046	710101-000408	0.80
33	Upper cover complex	2248 0022	700190-000149	65.10
34	W 3/8x 1 1/4" Screw	5040 3830	760101-000212	13.70
35	3/8 Washer	5040 9138	760103-000055	0.80
36	W 3/8x 1 1/2" Screw	5040 3840	760101-000218	0.80
37	Leg housing	2820 0040	710103-000381	71.40
38	Leg	5050 1400	760109-000038	43.10
39	Base cup	2820 0050	710101-000410	5.00
40	Leg complex	2248 0061	700190-000161	123.90
41	Lower cover wrench	5076 0022	760109-000052	21.00
42	Locking nut wrench	5076 0021	760109-000050	38.90



Spare Parts Price List Valid as of Sep 2012

BATTERY COMPONENTS AND VALVES

NO.	DESCRIPTION	OLD.CAT.NO	SAP. CAT.NO.	USD \$
	2" Victaulic connector	5032 0200	780102-000020	16.80
	2" Victaulic connector	5032 0205		
	3" Victaulic connector	5032 0300	780102-000025	24.20
	3" Victaulic connector blue	5032 0305		
	4" Victaulic connector	5032 0400	780102-000032	32.60
	4" Victaulic connector blue	5032 0405		
	6" Victaulic connector	5032 0600	780102-000036	64.10
	6" Victaulic connector blue	5032 0605	780102-000038	64.10
	3" Victaulic quick flange BSTD	5030 1605	740101-000156	52.50
	3" Victaulic quick flange DIN	5030 1604	740101-000155	52.50
	3" Victaulic quick flange A.S.A	5030 1602	740101-000154	52.50
	4" Victaulic quick flange A.S.A	5030 1612	740101-000159	71.40
	4" Victaulic quick flange BSTD / DIN	5030 1615	740101-000161	71.40
	6" Victaulic quick flange A.S.A / DIN / BSTD	5030 1625	740101-000164	190.10
	¾" Segev air release valve	5048 0075	730108-000006	128.10
	1" Barak air release valve	5048 0106	730108-000025	128.10
	1" NPT Barak air release valve	5048 0106NPT	730108-000026	128.10
	2" Barak air release valve	5048 0206	730108-000040	226.80
	Booster valve Bermad	5062 0002	730113-000293	141.80
	Booster valve Dorot	5060 0009	730110-000009	85.10
	Pressure check needle	5068 0002	720301-000002	18.90
	Seal for Vic. Connector 2"	5005 2002	770104-000027	3.70
	Seal for Vic. Connector 3"	5005 2003	770104-000028	4.00
	Seal for Vic.Connector 4"	5005 2004	770104-000029	8.10
	Seal for Vic.Connector 6"	5005 2006	770104-000030	11.60

Spare Parts Price List Valid as of Sep 2012

CONTROL SYSTEM

NO.	DESCRIPTION	OLD.CAT.NO	SAP. CAT.NO.	USD \$
	Murphy pressure differential gauge Tefen 8 mm	1900 0015	700103-000002	482.00
	United pressure differential gauge Tefen 8 mm	1900 0018	700103-000004	304.50
	United pressure differential gauge Baccara 6 mm	1900 0019		
	United pressure differential gauge Baccara 8 mm	1900 0021	700103-000005	304.50
	Electronic pressure differential gauge	1900 0026	700103-000008	304.50
	Electronic Baccara differential gauge Tefen 8 mm	1900 0035	700103-000013	304.50
	Electronic Baccara differential gauge Baccara 6 mm	1900 0036	700103-000014	304.50
	Dp electric sensor	5073 6014	720104-000002	86.00
	F-1 DC controller for 2" compact (only by Dp)	1901 DC01g2u		
	FT 1 DC 1 solenoid + united	1907 DC01g2u	700103-000645	924.00
	FT 2 DC 2 solenoid + united	1908 DC02g2u	700103-000657	1,133.00
	Filtron 246-2 DC 1 solenoid pl. Light case	1902 DC01g3u	700103-000076	1,199.10
	Filtron 246-2 DC 1 solenoid pl. Case	1902 DC01g2u	700103-000072	1,337.70
	Filtron 246-2 DC 2 solenoid pl. Light case	1902 DC02g3u	700103-000086	1,353.50
	Filtron 246-2 DC 2 solenoid pl. Case	1902 DC02g2u	700103-000082	1,485.80
	Filtron 246-4 DC 3 solenoid pl. Light case	1904 DC03g3u	700103-001046	1,697.90
	Filtron 246-4 DC 3 solenoid pl. Case	1904 DC03g2u	700103-000474	1,808.10
	Filtron 246-4 DC 4 solenoid pl. Light case	1904 DC04g3u	700103-001050	1,847.00
	Filtron 246-4 DC 4 solenoid pl. Case	1904 DC04g2u	700103-000492	1,961.40
	Filtron 246-6 DC 5 solenoid pl. Light case	1906 DC05g3u	700103-001049	2,086.40
	Filtron 246-6 DC 5 solenoid pl. Case	1906 DC05g2u	700103-000592	2,214.50
	Filtron 246-6 DC 6 solenoid pl. Light case	1906 DC06g3u	700103-000632	2,230.20
	Filtron 246-6 DC 6 solenoid pl. Case	1906 DC06g2u	700103-000620	2,360.40
	Filtron 3.6 DC 7 solenoid	1903 DC07g2u	700103-000373	3,386.30
	Filtron 3.6 DC 8 solenoid	1903 DC08g2u	700103-000397	3,537.50

(Continued)

Spare Parts Price List Valid as of Sep 2012

CONTROL SYSTEM

[Continued]

NO.	DESCRIPTION	OLD.CAT.NO	SAP. CAT.NO.	USD \$
	Filtron 246-2 AC 1 solenoid pl. Light case	1902 AC01b3u	700103-000037	1,234.80
	Filtron 246-2 AC 1 solenoid pl. Case	1902 AC01b2u	700103-000033	1,361.90
	Filtron 246-2 AC 2 solenoid pl. Light case	1902 AC02b3u	700103-000060	1,381.80
	Filtron 246-2 AC 2 solenoid pl. Case	1902 AC02b2u	700103-000056	1,483.70
	Filtron 246-4 AC 3 solenoid pl. Light case	1904 AC03b3u	700103-000418	1,719.90
	Filtron 246-4 AC 3 solenoid pl. Case	1904 AC03b2u	700103-000410	1,819.70
	Filtron 246-4 AC 4 solenoid pl. Light case	1904 AC04b3u	700103-000448	1,860.60
	Filtron 246-4 AC 4 solenoid pl. Case	1904 AC04b2u	700103-000437	1,961.40
	Filtron 246-6 AC 5 solenoid pl. Light case	1906 AC05b3u	700103-000534	2,073.80
	Filtron 246-6 AC 5 solenoid pl. Case	1906 AC05b2u	700103-000526	2,207.10
	Filtron 246-6 AC 6 solenoid pl. Light case	1906 AC06b3u	700103-000566	2,214.50
	Filtron 246-6 AC 6 solenoid pl. Case	1906 AC06b2u	700103-000556	2,351.00
	Filtron 3.6 Ac 7 solenoid	1903 AC07b2u	700103-000224	3,368.40
	Filtron 3.6 AC 8 solenoid	1903 AC08b2u	700103-000251	3,509.10
	Filtron 3.6 AC 9 solenoid	1903 AC09b2u	700103-000274	3,614.10
	Filtron 3.6 AC 10 solenoid	1903 AC10b2u	700103-000304	3,753.80

Spare Parts Price List Valid as of Sep 2012

CONTROL SYSTEM PARTS

NO.	DESCRIPTION	OLD.CAT.NO	SAP. CAT.NO.	USD \$
	Filtron Tf1 DC 9v (old)	5073 0021	720101-000006	389.60
	Filtron Tf2 DC 9v (old)	5073 0020	720101-000437	449.40
	Filtron 246 DC, 2 commands (plas. Light case)	5073 3202	720101-000184	592.20
	Filtron 246 DC, 2 commands (plas.Case)	5073 0202	720101-000035	704.60
	Filtron 246 DC, 4 commands (plas. Light case)	5073 3204	720101-000185	788.60
	Filtron 246 DC, 4 commands (plas.Case)	5073 0204	720101-000036	881.00
	Filtron 246 DC, 6 commands (plas.Light case)	5073 3206	720101-000186	881.00
	Filtron 246 DC, 6 commands (plas.Case)	5073 0206	720101-000037	989.10
	Filtron 246 AC, 2 commands (plas.Light case)	5073 3102	720101-000178	711.90
	Filtron 246 AC, 2 commands (plas.Case)	5073 0102	720101-000020	821.10
	Filtron 246 AC, 4 commands (plas.Light case)	5073 3104	720101-000179	912.50
	Filtron 246 AC, 4 commands (plas.Case)	5073 0104	720101-000022	992.30
	Filtron 246 AC, 6 commands (plas.Light case)	5073 3106	720101-000180	989.10
	Filtron 246 AC, 6 commands (plas.Case)	5073 0106	720101-000024	1,098.30
	Filtron 3.6 DC, 8 commands (plas.Case)	5073 0320	720101-000066	1,828.10
	Filtron 3.6 AC, 10 commands (plas.Case)	5073 0310	720101-000413	2,086.40
	Filtron 3.7 AC, 10 commands with Dp sensor	5073 0316	720101-000060	2,340.50
	Filtron 3.7 AC, 10 commands with Dp sensor 110 Volt	5073 0317	720101-000063	2,340.50
	12V battery	5072 0012	720207-000002	88.20
	9V battery	5072 0009	720207-000001	22.10
	Board for filtron f1 DC 9v (for 2" compact)	5073 1231	720101-000131	179.60
	Board + panel for filtron 246-2ac (polymeric light case)	5073 3212	720101-000187	311.90
	Board + panel for filtron 246-4ac (polymeric light case)	5073 3214	720101-000188	423.20
	Board + panel for filtron 246-6ac (polymeric light case)	5073 3216	720101-000189	508.20
	Board + panel for filtron 246-2DC (polymeric light case)	5073 3112	720101-000181	337.10

[Continued]

Spare Parts Price List Valid as of Sep 2012

CONTROL SYSTEM PARTS

[Continued]

NO.	DESCRIPTION	OLD.CAT.NO	SAP. CAT.NO.	USD \$
	Board + panel for filtron 246-4DC (polymeric light case)	5073 3114	720101-000182	449.40
	Board + panel for filtron 246-6DC (polymeric light case)	5073 3116	720101-000183	533.40
	Board + panel for filtron 3.6 AC, 10 commands	5073 1224	720101-000123	1,082.60
	Board + panel for filtron 3.7 AC, 10 commands	5073 1224Dp	720101-000124	1,310.40
	Board for filtron 3.7	5073 1237	720101-000135	634.20
	Board + panel for filtron 3.6 DC, 8 commands	5073 1226	720101-000126	1,211.70
	Gemsol solenoid, 24v AC 50 h	5074 2375	720103-000088	141.80
	Gemsol solenoid, 24v AC 60 h	5074 2376	720103-000089	149.20
	Bacsol solenoid, 24v AC	2254 1516	720103-000346	141.80
	Bacsol solenoid, 12v DC latch 3/W	5074 1123	720103-000345	141.80
	Actuator for bacsol 12v DC latch 3/W	5074 2339	720103-000021	31.50
	Bacsol solenoid, 12v DC latch 2/W	2254 1515	720103-000001	141.80
	Gemsol solenoid, 24v illuminated	1900 0030	700103-000011	152.30
	Polymeric box for filtron	5073 1010	720209-000001	314.00
	Polymeric light box for filtron	5073 1005	720101-000080	117.60
	Galit	5074 1099	720103-000014	83.00
	Metal support for Galit	5076 0020	760109-000049	10.00

Spare Parts Price List Valid as of Sep 2012

SET MANIFOLD PP

NO.	DESCRIPTION	OLD.CAT.NO	SAP. CAT.NO.	USD \$
	Set Manifold 2"x2" 90 mm (non injected) 250 mm	6626 0302V0	750101-004248	463.10
	Inlet Manifold 2"x2" 90 mm 250 mm	6626 0302V0	750101-004249	231.00
	Outlet Manifold 2"x2" 90 mm 250 mm	6626 0302V0	750101-004250	231.00
	Set Manifold 2"x2" 90 mm (non injected) 300 mm	6626 0302V0		
	Inlet Manifold 2"x2" 90 mm 300 mm	6626 0302V0	750101-004257	231.00
	Outlet Manifold 2"x2" 90 mm 300 mm	6626 0302V0	750101-004258	231.00
	Set Manifold 2"x2" 110 mm (injected)	5625 0402V0	750101-006798	325.50
	Set Manifold 2"x2" 110 mm (non injected)	6626 0402V0		
	Inlet Manifold 2"x2" 110 mm (non injected)	6626 0402V0		
	Outlet Manifold 2"x2" 110 mm (non injected)	6626 0402V0		
	Set Manifold 3"x2" 110 mm (injected)	5625 0403V0	750101-006799	357.00
	Set Manifold 3"x2" 110 mm (non injected)	6626 0403V0		
	Inlet Manifold 3"x2" 110 mm (non injected)	6626 0403V0	750101-004379	328.70
	Outlet Manifold 3"x2" 110 mm (non injected)	6626 0403V0	750101-004380	328.70
	Set Manifold 4"x2" 110 mm (injected)	5625 0404V0	750101-006800	490.40
	Set Manifold 4"x2" 110 mm (non injected)	6626 0404V0	750101-004389	832.70
	Inlet Manifold 4"x2" 110 mm (non injected)	6626 0404V0	750101-004390	415.80
	Outlet Manifold 4"x2" 110 mm (non injected)	6626 0404V0	750101-004391	415.80
	Set Manifold 5"x2" 110 mm (injected)	5625 0405V0	750101-000238	605.90
	Set Manifold 5"x2" 110 mm (non injected)	6626 0405V0	750101-004401	989.10
	Set Manifold 5"x2" 110 mm (non injected)	6626 0405V0	750101-004402	494.60
	Set Manifold 5"x2" 110 mm (non injected)	6626 0405V0	750101-004403	494.60
	Polymeric support leg 110 mm for 'Opal'	2530 2110	710101-000439	12.60
	Polymeric support leg 300 mm for 'Opal'	2530 2300	710101-000278	18.90
	3" Arkal Polymeric Universal Flange	2253 0325	700190-000223	45.20
	4" Arkal Polymeric Universal Flange	2253 0425	700190-000227	86.10
	In/out Manifold 3"x3" 168 mm (injected) 1 pcs.	6635 0603V0	750101-004708	239.40

[Continued]

Spare Parts Price List Valid as of Sep 2012

SET MANIFOLD PP

[Continued]

NO.	DESCRIPTION	OLD.CAT.NO	SAP. CAT.NO.	USD \$
	Inlet Manifold 3"x3" 160 mm (non injected)	6634 0603V0	750101-004620	425.30
	Outlet Manifold 3"x3" 160 mm (non injected)	6634 0603V0	750101-004621	425.30
	In/out Manifold 4"x3" 168 mm (injected) 1 pcs.	6635 0604V0	750101-004718	369.00
	Inlet Manifold 4"x3" 160 mm (non injected)	6634 0604V0	750101-004627	526.10
	Outlet Manifold 4"x3" 160 mm (non injected)	6634 0604V0	750101-004628	526.10
	In/out Manifold 5"x3" 168 mm (injected) 1 pcs	6635 0605V0	750101-004730	450.50
	Set Manifold 5"x3" 160 mm (non injected)	6634 0605V0		
	Set Manifold 5"x3" 160 mm (non injected)	6634 0605V0		
	In/out Manifold 6"x3" 168 mm (injected) 1 pcs	6635 0606V0	750101-004743	486.00
	Inlet Manifold 6"x3" 160 mm (non injected)	6634 0606V0	750101-004639	774.90
	Outlet Manifold 6"x3" 160 mm (non injected)	6634 0606V0	750101-004640	774.90
	6" Arkal Polymeric Universal Flange	2253 0625	700190-000238	111.30
	Set support legs for 160 mm	2253 0601	700190-000231	101.90
	3" Polymeric vic. Cap	2530 0300	710101-000165	20.00
	4" Polymeric vic. Cap	2530 0400	710101-000433	30.50
	6" Polymeric vic. Cap	2530 0600	710101-000200	41.00

Spare Parts Price List Valid as of Sep 2012

BACKWASH VALVES

NO.	DESCRIPTION	OLD.CAT.NO	SAP. CAT.NO.	USD \$
	Dorot model 09T - NC Galil size 2" metallic actuator	5060 0124		
	Dorot model 09T - NC Galil size 2" polymeric actuator	5060 0102		
	Dorot Flush Gal 51 2"X 2" Straight Flow Red Metal	5060 1211	730102-000005	432.60
	Dorot Flush Gal 51 2"X 2" Straight Flow Blue Metal	5060 1216	730102-000013	432.60
	Dorot Flush Gal 51 2"X 2" Straight Reverse Flow Red Metal	5060 1212	730102-000011	432.60
	Dorot Flush Gal 51 2"X 2" Straight Reverse Flow Blue Metal	5060 1217	730102-000016	432.60
	Bermad 2"X 2" Metal Straight Flow Blue	5062 3225	730102-000141	731.90
	Bermad Metal Reverse Flow Blue	5062 3226	730102-000143	731.90
	Bermad 2"X 2" Polymeric Straight Flow	5062 0224		331.03
	Bermad 2"X 2" Polymeric Straight Reverse Flow	5062 0226	730102-000173	331.80
	Polymeric Backwash Valve Angle Flow	5062 0228	730102-000169	331.80
	Bermad 2"X 2" Polymeric Straight Flow Sea Water	5062 0224Ws	730102-000108	669.90
	Bermad 2"X 2" Polymeric Straight Reverse Flow Sea Water	5062 0226Ws	730102-000115	669.90
	Bermad 2"X 2" Polymeric Straight Reverse Flow Pp	5062 0224Pp		
	Bermad 2"X 2" Polymeric Straight Reverse Flow Pp	5062 0226Pp		
	Dorot Flush Gal 3"X2" Backwash Valve, Victaulic A.K.	5060 3211	730102-000035	515.60
	Dorot Polymeric 3"X2" Backwash Valve Victaulic Ends	5060 5323		474.01
	Bermad 3"X3" Straight, Victaulic, Model 350 Green	5062 1237		
	Bermad 3"X3" Straight Victaulic, Model 350 Blue	5062 1257	730102-000135	798.00
	Bermad 3"X3" Straight Flow Reverse Flow Blue	5062 1258	730102-000138	798.00
	Bermad 3"X3" Polymeric Straight Flow	5062 1247	730102-000179	474.60
	Dorot Flush Gal 4"X3" Backwash Valve, Victaulic	5060 3401	730102-000042	1,049.00
	Dorot 4"X4" Double Chamber Angle Flow Model 63 Blue Metal	5060 3414	730102-000050	1,047.90
	Dorot 4"X4" Double Chamber Angle Flow Model 63 Red Metal	5060 3414R	730102-000051	1,047.90
	Dorot 4"X3" Double Chamber Angle Flow Model 63 Blue Metal	5060 3413	730102-000048	1,047.90
	Dorot 4"X3" Double Chamber Angle Flow Model 63 Red Metal	5060 3413R	730102-000049	1,047.90

Spare Parts Price List Valid as of Sep 2012

BACKWASH VALVES

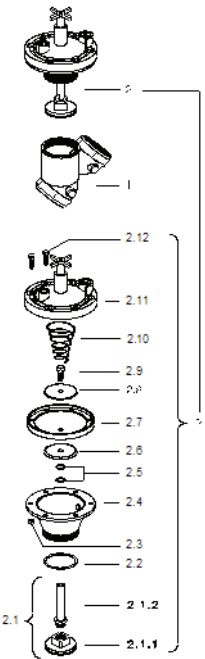
[Continued]

NO.	DESCRIPTION	OLD.CAT.NO	SAP. CAT.NO.	USD \$
	Dorot 4"X4" Double Chamber Straight Flow Model 62 Blue Metal	5060 3454	730102-000056	1,047.90
	Dorot 4"X4" Double Chamber Straight Flow Model 62 Red Metal	5060 3454R		
	Dorot 4"X3" Double Chamber Straight Flow Model 62 Blue Metal	5060 3403	730102-000046	1,047.90
	Dorot 4"X3" Double Chamber Straight Flow Model 62 Red Metal	5060 3403R	730102-000047	1,047.90
	Plaslite 4"X3" Threaded Backwash Valve For Gravel	5060 4403	730102-000066	845.30
	Plaslite 4"X3" Threaded Backwash Valve For Gravel	5060 5423	730102-000066	845.30
	Plaslite 4"X3" Threaded Backwash Valve For Gravel	5060 4403	730102-000066	845.30
	Bermad 4"X3" Victaulic / Threaded For Star System Red Straight Flow	5062 4340	730102-000145	1,218.00
	Bermad 4"X4" Victaulic / Victaulic Red Straight Flow	5062 4347	730102-000152	1,081.50
	Bermad 4"X4" Victaulic / Victaulic Blue Straight Flow	5062 4454	730102-000154	1,250.60
	Bermad 4"X4" Victaulic / Victaulic Straight Reverse Flow Blue	5062 4455	730102-000157	1,250.60

DOROT MODEL 09T - NC GALIL SIZE 2" POLYMERIC NEW

Old.Cat. No.: 5060 0124 Blue old
5060 0102 Polymeric new

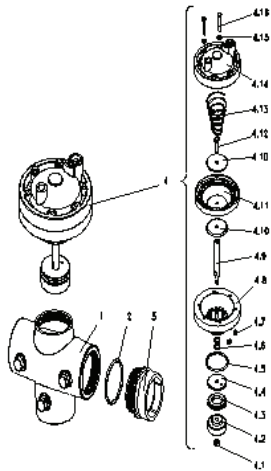
NO.	DESCRIPTION	OLD.CAT.NO	SAP. CAT.NO.	USD \$
1	Valve body	5060 0124 01	730113-000070	164.90
2	Bronze actuator	5060 0011Bl	730113-000011	426.30
	Polymeric actuator	5060 0011Pl	730113-000013	236.30
2.1	Shaft assembly	5060 0122 201	730113-000059	93.50
2.1.1	Piston assembly	5060 0122 213	730113-000065	32.60
2.1.2	Shaft & nut	5060 0122 217	730113-000069	45.20
2.2	O-ring 2-227	5002 2227		
2.3	Nut	5060 0122 203	730113-000060	3.70
2.4	Actuator body bronze	5060 0124 204	730113-000071	266.70
	Actuator body polymeric	5060 0102 204	730113-000054	51.50
2.5	O-ring	5060 1211 405		
2.6	Lower disc	5060 1211 409	730113-000115	11.60
2.7	Diaphragm	5060 1211 410		
2.8	Upper disc	5060 1211 411	730113-000120	15.80
2.9	Bolt	5060 1211 412	730113-000122	1.70
2.1	Spring	5060 0122 210	730113-000062	26.30
2.11	Cover	5060 0120 16		
2.12	Bolts	5060 0102 212		



DOROT FLUSH GAL 51 2"x2" STRAIGHT FLOW

51A-model; size 2"x2" (polymeric actuator)
Old.Cat.No.:5060 1211 (Red)

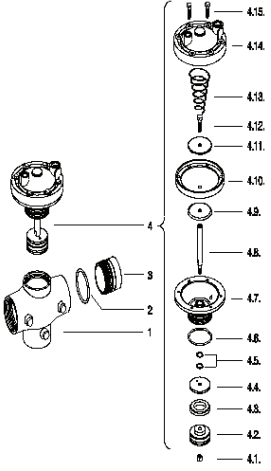
NO.	DESCRIPTION	OLD.CAT.NO	SAP. CAT.NO.	USD \$
1	Valve body (red)	5060 1211 01	730113-000509	314.00
2	O-ring 2 - 227	5002 2227		
3	Adaptor	5060 1211 03	730113-000098	29.40
4	Actuator assembly	5060 1211 04	730113-000099	280.40
4.1	Nut	5060 1211 401	730113-000102	1.50
4.2	Seal disc	5060 1212 402	730113-000128	36.80
4.3	Seal	5060 1211 403		
4.4	Disc	5060 1211 404	730113-000108	35.70
4.5	O-ring 2 - 227	5002 2227		
4.6	O-ring 6 - 075	5060 1211 405		
4.7	Nut	5060 1211 417		
4.8	Operator body	5060 1211 407H		
4.9	Shaft	5060 1211 408	730113-000114	35.70
4.1	Diaphragm disc	5060 1211 409H		
4.11	Diaphragm no 302	5060 1211 410		
4.12	Bolt	5060 1211 412	730113-000122	1.70
4.13	Spring 52 for 2x2 bfv	5060 1211 413		
4.14	Cover	5060 1212 414H		
4.15	Washer	5060 1211 416		
4.16	Bolt	5060 1211 415H		



DOROT FLUSH GAL 51 2"x2" STRAIGHT FLOW

51-Model; size 2"x2"
Old.Cat.No.: 5060 1211 (Red)
Old.Cat.No.: 5060 1216 (Blue)

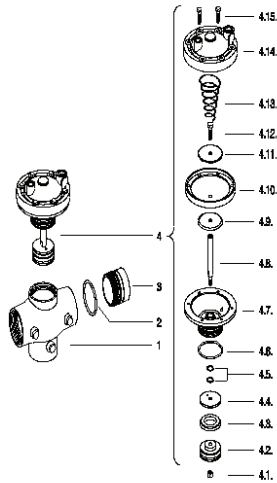
NO.	DESCRIPTION	OLD.CAT.NO	SAP. CAT.NO.	USD \$
1	Valve body (red)	5060 1211 01	730113-000509	314.00
	Valve body (blue)	5060 1216 01	730113-000133	314.00
2	O-ring 2 - 227	5002 2227		
3	Adaptor	5060 1211 03	730113-000098	29.40
4	Actuator assembly	5060 0021	730113-000506	356.00
4.1	Nut	5060 1211 401	730113-000102	1.50
4.2	Seal disc	5060 1211 404	730113-000108	35.70
4.3	Seal	5060 1211 403		
4.4	Seal bowl	5060 1211 402	730113-000103	32.60
4.5	O-ring	5060 1211 405		
4.6	O-ring 2 - 227	5002 2227		
4.7	Actuator body	5060 1211 407	730113-000113	183.39
4.8	Shaft	5060 1211 408	730113-000114	37.80
4.9	Lower disc	5060 1211 409	730113-000115	11.60
4.1	Diaphragm 06	5060 1211 410		15.06
4.11	Upper disc	5060 1211 411	730113-000120	15.80
4.12	Bolt	5060 1211 412	730113-000122	1.70
4.13	Spring 52 for 2x2 bfv	5060 1211 413		52.04
4.14	Grey cover	5060 1211 414	730113-000124	52.50
4.15	Bolts	5060 1211 415	730113-000125	1.00



DOROT FLUSH GAL 51 2"x2" STRAIGHT REVERSE FLOW

51A-model; size 2"x2" (reverse flow)
Old.Cat.No.:5060 1212 (Red)
Old.Cat.No.:5060 1217 (Blue)

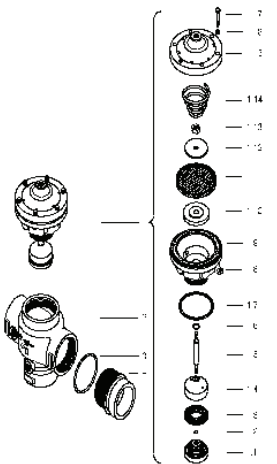
NO.	DESCRIPTION	OLD.CAT.NO	SAP. CAT.NO.	USD \$
1	Valve body (red)	5060 1211 01	730113-000509	314.00
	Valve body (blue)	5060 1216 01	730113-000133	314.00
2	O-ring 2-227	5002 2227		
3	Adaptor	5060 1211 03	730113-000098	29.40
	Actuator assembly polymeric	5060 1212 04	730113-000126	280.40
4	Actuator assembly blue	5060 0026Bl	730113-000030	295.10
4.1	Nut	5060 1211 401	730113-000102	1.50
4.2	Seal disc	5060 1212 402	730113-000128	36.80
4.3	Seal	5060 1211 403		
4.4	Seal bowl	5060 1212 404	730113-000130	30.50
4.5	O-ring	5060 1211 405		
4.6	O-ring 2-227	5002 2227		
4.7	Actuator body	5060 1211 407	730113-000113	183.39
4.8	Shaft	5060 1211 408	730113-000114	37.80
4.9	Lower disc	5060 1211 409	730113-000115	11.60
4.1	Diaphragm 06	5060 1211 410		15.06
4.11	Upper disc	5060 1211 411	730113-000120	15.80
4.12	Bolt	5060 1211 412	730113-000122	1.70
4.13	Spring 52 for 2x2 bfv	5060 1211 413		52.04
4.14	Grey cover	5060 1212 414	730113-000132	52.50
4.15	Bolts	5060 1211 415	730113-000125	1.00



BERMAD 2"x2" METAL STRAIGHT FLOW BLUE

350 Series; size 2"x2"
Old.Cat.No.:5062 3225 Straight flow (blue color)

NO.	DESCRIPTION	OLD.CAT.NO	SAP. CAT.NO.	USD \$
1	Internal assembly	5062 3222 01	730113-000438	333.90
1.1	Plug washer	5062 3222 101	730113-000440	39.90
1.2	O-ring	5062 3222 102	730113-000441	2.60
1.3	Seal	5062 3222 103	730113-000442	18.90
1.4	Plug	5062 3222 104	730113-000443	42.00
1.5	Shaft	5062 3222 105	730113-000444	59.90
1.6	O-ring	5062 1237 110	730113-000540	0.30
1.7	O-ring	5062 0022 208	730113-000307	2.60
1.8	Nut	5062 0022 207	730113-000306	0.80
1.9	Separation partition	5062 3222 109	730113-000445	28.40
1.1	Supporting disc	5062 0022 205	730113-000304	16.80
1.11	Diaphragm	5062 3222 111	730113-000446	18.90
1.12	Disc	5062 0224 212		
1.13	Nut	5062 3222 113	730113-000449	2.70
1.14	Spring	5062 3222 115	730113-000451	15.80
1.15	Grey cover	5062 3222 116	730113-000452	16.80
1.16	Washer	5062 3222 117	730113-000453	2.80
1.17	Bolts	5062 3222 114	730113-000450	1.20
2	Threaded body (blue)	5062 3226 04	730113-000455	274.10
3	O-ring	5062 1222 02	730113-000349	0.80
4	2" Vic/thr adaptor	5062 1222 03	730113-000350	68.30



BERMAD METAL REVERSE FLOW BLUE

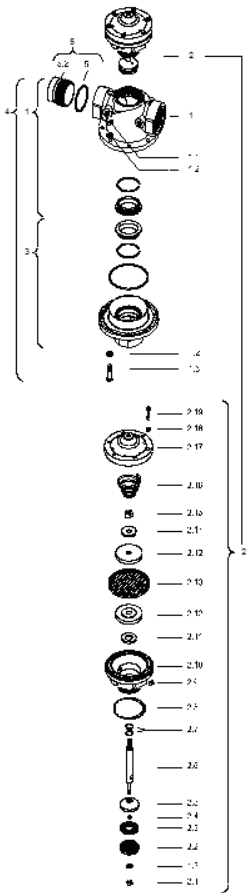
350 Series; size 2"x2"
Old.Cat.No.:5062 3226 Straight reverse flow (blue color)

NO.	DESCRIPTION	OLD.CAT.NO	SAP. CAT.NO.	USD \$
1	Internal assembly	5062 3226 01	730113-000454	286.70
1.1	Plug washer	5062 3226 101		
1.2	O-ring	5062 3222 102	730113-000441	2.60
1.3	Seal	5062 3222 103	730113-000442	18.90
1.4	Plug	5062 3222 104	730113-000443	42.00
1.5	Shaft	5062 3222 105	730113-000444	59.90
1.6	O-ring	5062 1237 110	730113-000540	0.30
1.7	O-ring	5062 0022 208	730113-000307	2.60
1.8	Nut	5062 0022 207	730113-000306	0.80
1.9	Separation partition	5062 3222 109	730113-000445	28.40
1.1	Supporting disc	5062 0022 205	730113-000304	16.80
1.11	Diaphragm	5062 3222 111	730113-000446	18.90
1.12	Disc	5062 0224 212		

BERMAD 2"x2" POLYMERIC STRAIGHT FLOW

Old.Cat.No.:5062 0224

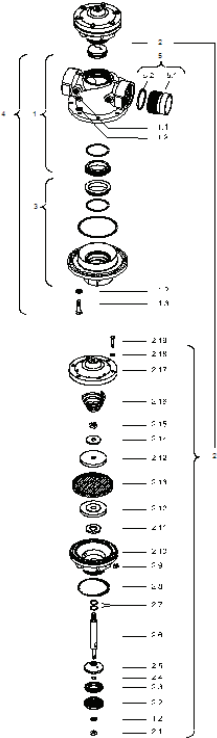
NO.	DESCRIPTION	OLD.CAT.NO	SAP. CAT.NO.	USD \$
1	Body	730113-000324	730113-000317	161.70
1.1	Nut	730113-000441		
1.2	Washer	730113-000325	730113-000355	2.60
1.3	Bolt	730113-000326	730113-000318	2.20
2	Actuator assembly	730113-000540	730113-000507	239.40
2.1	Nut	730113-000307	730113-000320	1.00
2.2	Plug washer	730113-000306	730113-000323	35.70
2.3	Seal	730113-000445	730113-000324	20.00
2.4	O-ring	730113-000304	730113-000441	2.60
2.5	Plug	730113-000321	730113-000325	29.40
2.6	Shaft	730113-000446	730113-000326	36.80
2.7	O-ring	730113-000322	730113-000540	0.30
2.8	O-ring	730113-000449	730113-000307	2.60
2.9	Nut	730113-000451	730113-000306	0.80
2.1	Separation partition	730113-000452	730113-000445	28.40
2.11	Spring washer	730113-000453	730113-000304	16.80
2.12	Disc	730113-000450	730113-000321	20.00
2.13	Diaphragm	730113-000315	730113-000446	18.90
2.14	Stopper disc	730113-000339	730113-000322	4.90
2.15	Nut	700190-003407	730113-000449	2.70
2.16	Spring	710101-000186	730113-000451	15.80
2.17	Grey cover	5062 3222 116	730113-000452	16.80
2.18	Washer	5062 3222 117	730113-000453	2.80
2.19	Bolt	5062 3222 114	730113-000450	1.20
3	Assembly lower seat	5062 0224 03	730113-000315	91.60
4	Body assembly	5062 0224 04	730113-000339	261.50
5	Adaptor assembly	2253 0508	700190-003407	5.60
5.1	Adaptor	2530 0508	710101-000186	3.30
5.2	O-ring	5002 2227		2.00



BERMAD 2"X2" POLYMERIC STRAIGHT REVERSE FLOW

Old.Cat.No.:5062 0226

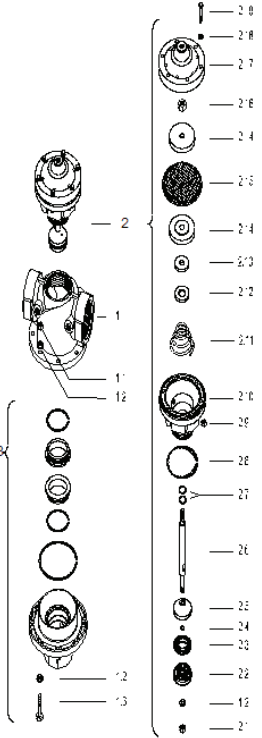
NO.	DESCRIPTION	OLD.CAT.NO	SAP. CAT.NO.	USD \$
1	Body	5062 0226 01		
1.1	Nut	5062 1237 114		
1.2	Washer	5062 1231 05	730113-000355	2.60
1.3	Bolt	5062 0224 13	730113-000318	2.20
2	Actuator assembly	5062 0226 02	730113-000338	239.40
2.1	Nut	5062 0224 21	730113-000320	1.00
2.2	Plug washer	5062 0226 23	730113-000340	35.70
2.3	Seal	5062 0224 24	730113-000324	20.00
2.4	O-ring	5062 3222 102	730113-000441	2.60
2.5	Plug	5062 0226 26	730113-000341	31.50
2.6	Shaft	5062 0224 27	730113-000326	36.80
2.7	O-ring	5062 1237 110	730113-000540	0.30
2.8	O-ring	5062 0022 208	730113-000307	2.60
2.9	Nut	5062 0022 207	730113-000306	0.80
2.1	Separation partition	5062 3222 109	730113-000445	28.40
2.11	Spring washer	5062 0022 205	730113-000304	16.80
2.12	Disc	5062 0224 213	730113-000321	20.00
2.13	Diaphragm	5062 3222 111	730113-000446	18.90
2.14	Stopper disc	5062 0224 215	730113-000322	4.90
2.15	Nut	5062 3222 113	730113-000449	2.70
2.16	Spring	5062 3222 115	730113-000451	15.80
2.17	Grey cover	5062 3222 116	730113-000452	16.80
2.18	Washer	5062 3222 117	730113-000453	2.80
2.19	Bolt	5062 3222 114	730113-000450	1.20
3	Assembly lower seat	5062 0224 03	730113-000315	91.60
4	Body assembly	5062 0226 04		
5	Adaptor assembly	2253 0508	700190-003407	5.60
5.1	O-ring	5002 2227		
5.2	Adaptor	2530 0508	710101-000186	3.30



BERMAD 2"X2" POLYMERIC ANGLE FLOW

Old.Cat.No.:5062 0228

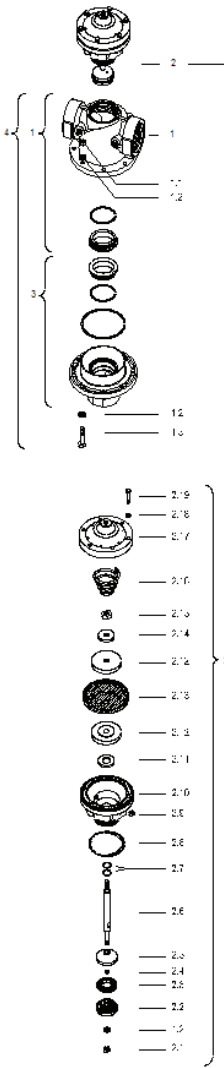
NO.	DESCRIPTION	OLD.CAT.NO	SAP. CAT.NO.	USD \$
1	Body	5062 0228 01		
1.1	Nut	5062 1237 114		
1.2	Washer	5062 1231 05	730113-000355	2.60
1.3	Bolt	5062 0224 13	730113-000318	2.20
2	Actuator assembly	5062 0228 02	730113-000346	241.50
2.1	Nut	5062 0224 21	730113-000320	1.00
2.2	Plug washer	5062 0226 23	730113-000340	35.70
2.3	Seal	5062 0224 24	730113-000324	20.00
2.4	O-ring	5062 3222 102	730113-000441	2.60
2.5	Plug	5062 0226 26	730113-000341	31.50
2.6	Shaft	5062 0224 27	730113-000326	36.80
2.7	O-ring	5062 1237 110	730113-000540	0.30
2.8	O-ring	5062 0022 208	730113-000307	2.60
2.9	Nut	5062 0022 207	730113-000306	0.80
2.1	Separation partition	5062 3222 109	730113-000445	28.40
2.11	Spring washer	5062 0022 205	730113-000304	16.80
2.12	Disc	5062 0224 213	730113-000321	20.00
2.13	Diaphragm	5062 3222 111	730113-000446	18.90
2.14	Stopper disc	5062 0224 215	730113-000322	4.90
2.15	Nut	5062 3222 113	730113-000449	2.70
2.16	Spring	5062 3222 115	730113-000451	15.80
2.17	Grey cover	5062 3222 116	730113-000452	16.80
2.18	Washer	5062 3222 117	730113-000453	2.80
2.19	Bolt	5062 3222 114	730113-000450	1.20
3	Assembly lower seat	5062 0224 03	730113-000315	91.60
4	Assembly body	5062 0224 04	730113-000339	261.50
5	Assembly adaptor	2253 0508	700190-003407	5.60
	Adaptor	2530 0508	710101-000186	3.30
	O-ring	5002 2227		



BERMAD 2"X2" POLYMERIC STRAIGHT FLOW SEA WATER

350 Series; size 2"x2"
Old.Cat.No.:5062 0224Ws

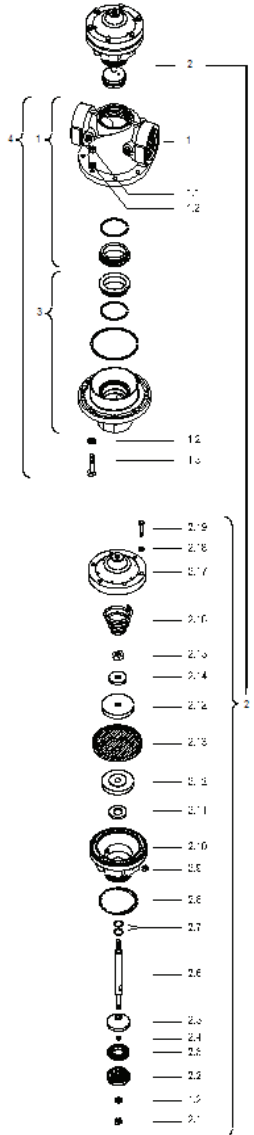
NO.	DESCRIPTION	OLD.CAT.NO	SAP. CAT.NO.	USD \$
1	Body	5062 0224Ws 01	730113-000330	254.10
1.1	Nut	5062 0022 207	730113-000306	0.80
1.2	Washer	5062 1231 05	730113-000355	2.60
1.3	Bolt	5062 0224 13	730113-000318	2.20
2	Actuator assembly	5062 0224Ws 02	730113-000331	429.50
2.1	Nut	5062 0224 21	730113-000320	1.00
2.2	Plug washer	5062 0224 23	730113-000323	35.70
2.3	Seal	5062 0224 24	730113-000324	20.00
2.4	O-ring	5062 3222 102	730113-000441	2.60
2.5	Plug	5062 0224 26	730113-000325	29.40
2.6	Shaft	5062 0224Ws 27	730113-000336	97.70
2.7	O-ring	5062 1237 110	730113-000540	0.30
2.8	O-ring	5062 0022 208	730113-000307	2.60
2.9	Nut	5062 0022 207	730113-000306	0.80
2.1	Separation partition	5062 3222 109	730113-000445	28.40
2.11	Spring washer	5062 0022 205	730113-000304	16.80
2.12	Disc	5062 0224 213	730113-000321	20.00
2.13	Diaphragm	5062 3222 111	730113-000446	18.90
2.14	Support disc	5062 0224 215	730113-000322	4.90
2.15	Nut	5062 3222 113	730113-000449	2.70
2.16	Spring	5062 0224Ws 216		
2.17	Grey cover	5062 3222 116	730113-000452	16.80
2.18	Washer	5062 3222 117	730113-000453	2.80
2.19	Bolt	5062 3222 114	730113-000450	1.20
3	Assembly lower seat	5062 0224Ws 03	730113-000332	153.30
4	Assembly body	5062 0224Ws 04	730113-000333	402.20



BERMAD 2"X2" POLYMERIC STRAIGHT REVERSE FLOW SEA WATER

350 Series; size 2"x2"
Old.Cat.No.:5062 0226Ws

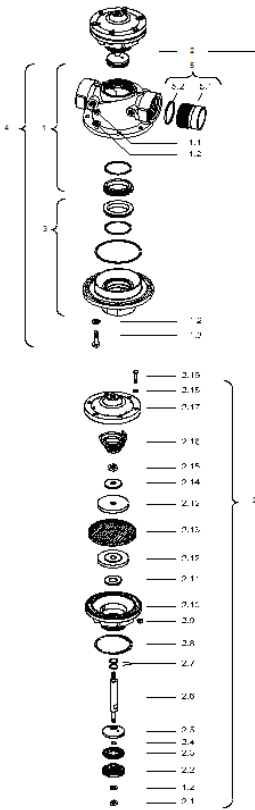
NO.	DESCRIPTION	OLD.CAT.NO	SAP. CAT.NO.	USD \$
1	Body	5062 0226Ws 01		
1.1	Nut	5062 0022 207	730113-000306	0.80
1.2	Washer	5062 1231 05	730113-000355	2.60
1.3	Bolt	5062 0224 13	730113-000318	2.20
2	Actuator assembly	5062 0226Ws 02	730113-000345	429.50
2.1	Nut	5062 0224 21	730113-000320	1.00
2.2	Plug washer	5062 0224 23	730113-000323	35.70
2.3	Seal	5062 0224 24	730113-000324	20.00
2.4	O-ring	5062 3222 102	730113-000441	2.60
2.5	Plug	5062 0226 26	730113-000341	31.50
2.6	Shaft	5062 0224Ws 27	730113-000336	97.70
2.7	O-ring	5062 1237 110	730113-000540	0.30
2.8	O-ring	5062 0022 208	730113-000307	2.60
2.9	Nut	5062 0022 207	730113-000306	0.80
2.1	Separation partition	5062 3222 109	730113-000445	28.40
2.11	Spring washer	5062 0022 205	730113-000304	16.80
2.12	Disc	5062 0224 213	730113-000321	20.00
2.13	Diaphragm	5062 3222 111	730113-000446	18.90
2.14	Support disc	5062 0224 215	730113-000322	4.90
2.15	Nut	5062 3222 113	730113-000449	2.70
2.16	Spring	5062 0224Ws 216		
2.17	Grey cover	5062 3222 116	730113-000452	16.80
2.18	Washer	5062 3222 117	730113-000453	2.80
2.19	Bolt	5062 3222 114	730113-000450	1.20
3	Assembly lower seat	5062 0224Ws 03	730113-000332	153.30
4	Assembly body	5062 0224Ws 04	730113-000333	402.20



BERMAD 2"X2" POLYMERIC STRAIGHT REVERSE FLOW PP

350 Series; size 2"x2"
Old.Cat.No.:5062 0224Pp

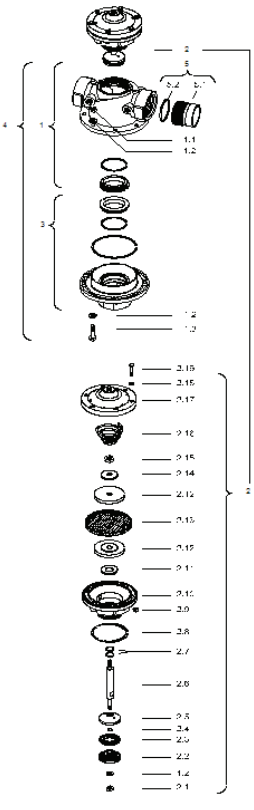
NO.	DESCRIPTION	OLD.CAT.NO	SAP. CAT.NO.	USD \$
1	Body	5062 0226Pp 01		
1.1	Nut	5062 0022 207	730113-000306	0.80
1.2	Washer	5062 0224Pp 12		
1.3	Bolt	5062 0224 13	730113-000318	2.20
2	Actuator assembly	5062 0226Pp 02	730113-000343	429.50
2.1	Nut	5062 0224 21	730113-000320	1.00
2.2	Plug washer	5062 0226 23	730113-000340	35.70
2.3	Seal	5062 0224 24	730113-000324	20.00
2.4	O-ring	5062 0224Pp 24		97.07
2.5	Plug	5062 0226 26	730113-000341	31.50
2.6	Shaft	5062 0224Ws 27	730113-000336	97.70
2.7	O-ring	5062 1237 110Ep	730113-000375	3.40
2.8	O-ring	5062 0244Pp 208		
2.9	Nut	5062 0022 207	730113-000306	0.80
2.1	Separation partition	5062 0224Pp 210		
2.11	Spring washer	5062 1237 106		
2.12	Disc	5062 0224Pp 212		
2.13	Diaphragm	5062 3222 111	730113-000446	18.90
2.14	Support disc	5062 0224Pp 214		
2.15	Nut	5062 3222 113	730113-000449	2.70
2.16	Spring	5062 0224Ws 216		
2.17	Grey cover	5062 3222 116	730113-000452	16.80
2.18	Washer	5062 3222 117	730113-000453	2.80
2.19	Bolt	5062 3222 114	730113-000450	1.20
3	Assembly lower adaptor	5062 0224Pp 03		
3.1	O-ring 2-243	5003 2243	770102-000038	3.50
4	Assembly body	5062 0226Pp 04		
5	Adaptor assembly	2253 0015	700190-000194	18.90
5.1	Adaptor	2253 0515	700190-000230	16.80
5.2	O-ring	5002 2227		



BERMAD 2"X2" POLYMERIC STRAIGHT REVERSE FLOW PP

350 SERIES; SIZE 2"x2"
Old.Cat.No.:5062 0226PP

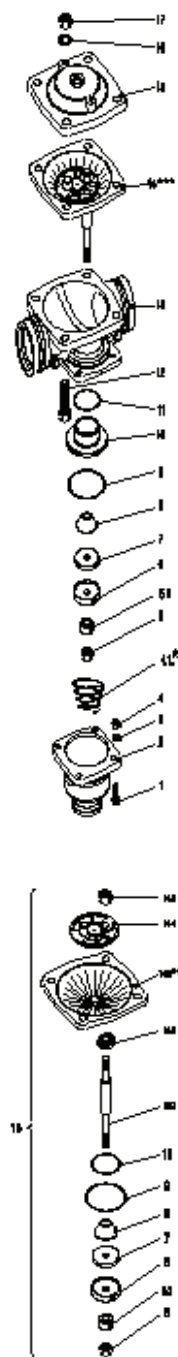
NO.	DESCRIPTION	OLD.CAT.NO	SAP. CAT.NO.	USD \$
1	Body	5062 0226PP 01		
1.1	Nut	5062 0022 207	730113-000306	0.80
1.2	Washer	5062 0224PP 12		
1.3	Bolt	5062 0224 13	730113-000318	2.20
2	Actuator assembly	5062 0226PP 02	730113-000343	429.50
2.1	Nut	5062 0224 21	730113-000320	1.00
2.2	Plug washer	5062 0226 23	730113-000340	35.70
2.3	Seal	5062 0224 24	730113-000324	20.00
2.4	O-ring	5062 0224PP 24		
2.5	Plug	5062 0226 26	730113-000341	31.50
2.6	Shaft	5062 0224WS 27	730113-000336	97.70
2.7	O-ring	5062 1237 110EP	730113-000375	3.40
2.8	O-ring	5062 0244PP 208		
2.9	Nut	5062 0022 207	730113-000306	0.80
2.1	Separation partition	5062 0224PP 210		
2.11	Spring washer	5062 1237 106		
2.12	Disc	5062 0224PP 212		
2.13	Diaphragm	5062 3222 111	730113-000446	18.90
2.14	Support disc	5062 0224PP 214		
2.15	Nut	5062 3222 113	730113-000449	2.70
2.16	Spring	5062 0224WS 216		
2.17	Grey cover	5062 3222 116	730113-000452	16.80
2.18	Washer	5062 3222 117	730113-000453	2.80
2.19	Bolt	5062 3222 114	730113-000450	1.20
3	Assembly lower adaptor	5062 0224PP 03		
3.1	O-ring 2-243	5003 2243	770102-000038	3.50
4	Assembly body	5062 0226PP 04		
5	adaptor assembly	2253 0015	700190-000194	18.90
5.1	adaptor	2253 0515	700190-000230	16.80
5.2	O-ring	5002 2227		



DOROT FLUSH GAL 3"x2" BACKWASH VALVE, VICTAULIC A.K.

MODEL-58; SIZE 3"x2" A.K.
Old.Cat.No.:5060 3211

NO.	DESCRIPTION	OLD.CAT.NO	SAP. CAT.NO.	USD \$
1	Bolt	5060 3211 01	730113-000156	1.30
2	Threaded adaptor	5060 3211 02	730113-000157	136.50
3	Washer	5060 3211 03	730113-000158	1.00
4	Nut	5060 3211 04	730113-000159	1.00
4.1*	Spring (optional)	5060 3214 02	730113-000185	48.30
5	Nut	5060 3211 05	730113-000160	7.60
5.1	Fixing insert	5060 3211 051	730113-000161	11.60
6	Seal bowl	5060 3211 06	730113-000163	22.10
7	Seal	5060 3211 07	730113-000165	4.40
8	Guide cone	5060 3211 08	730113-000166	64.10
9	O-ring	5060 3211 09	730113-000168	4.70
10	Seat	5060 3211 10	730113-000169	57.80
11	O-ring	5060 3211 11	730113-000170	4.30
12	Bolt	5060 3211 12	730113-000172	4.00
13	Victaulic body	5060 3211 13	730113-000173	0.00
14	Diaphragm assembly 6mm	5060 3211 14		
14***	Diaphragm assembly 9mm	5060 3214 03		
14.1	Stem	5060 3211 141	730113-000174	80.90
14.2	Small disc	5060 3211 142	730113-000175	11.60
14.3	Diaphragm 6mm	5060 3211 143		
14.3**	Diaphragm 9mm	5060 3214 143	730113-000188	79.80
14.4	Large disc	5060 3211 144	730113-000177	52.50
14.5	Nut	5060 3211 145	730113-000179	7.10
15	Bonnet	5060 3211 15	730113-000181	105.00
16	Washer	5060 3211 16	730113-000182	1.00
17	Nut	5060 3211 17	730113-000183	0.80
18	Valve kit 6mm	5060 0032	730113-000032	303.50
	Valve kit 9mm	5060 0033	730113-000034	303.50

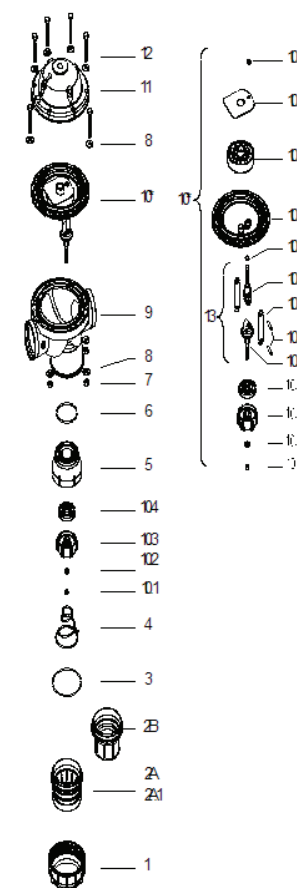


Spare Parts Price List Valid as of Sep 2012

PLASLITE 3"x2" BACKWASH VALVE VICTAULIC ENDS

MODEL: F2
3"x 3" VICTAULIC ENDS Old.Cat.No.:5060 5323
3"x 2" THREADED ENDS Old.Cat.No.:5060 5302

NO.	DESCRIPTION	OLD.CAT.NO	SAP. CAT.NO.	USD \$
1	Locking nut	2506 0410	710101-000118	7.40
2	Threaded adapter 2"	5060 5302 02	730113-000255	38.90
2A	Victaulic adapter 3"	5060 4424 02A1	730113-000228	70.40
3	2-246 O-ring	5003 2246	770102-000039	4.10
4	Spring 11	5060 4424 04	730113-000232	104.00
5	M8 nut	5060 4424 05	730113-000234	4.40
6	Disc	5060 4424 06	730113-000235	7.60
7	Seal disc	5060 5302 07	730113-000256	13.10
8	Seal	5060 4424 08	730113-000237	18.90
9	Seat	5060 5302 09	730113-000257	40.60
10	2- 235 O-ring	5003 2235	770102-000033	3.50
11	M10 nut	5060 4424 11	730113-000240	5.40
12	M 10 x 2 disc	5060 4424 12	730113-000241	2.62
13	Valve body	5060 5302 13	730113-000258	116.60
14	Diaphragm assembly	5060 7323	730113-000267	241.50
	Diaphragm kit assembly	5060 7323VK	730113-000269	325.50
14.1	Lower connector	5060 4424 141	730113-000243	
14.2	Connector pin	5060 4424 142	730113-000244	
14.3	Shaft	5060 5303 143		
14.4	Upper connector	5060 4424 144	730113-000246	
14.5	2-112 O-ring	5060 4424 145	730113-000247	1.60
14.6	Diaphragm	5060 5424 146	730113-000263	77.70
14.7	Upper disc	5060 4424 146	730113-000248	77.70
14.8	Stopper disc	5060 4424 148	730113-000250	97.70
15	Bonnet	5060 4424 15	730113-000252	69.30
16	M10x60 bolt	5060 4424 16	730113-000253	10.50
17	Shaft complete	5060 5302 17	730113-000261	96.60

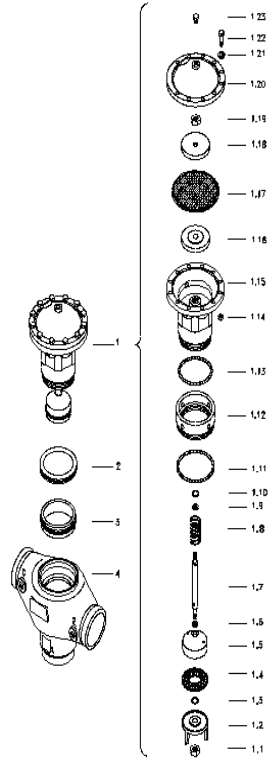


Spare Parts Price List Valid as of Sep 2012

BERMAD 3"X3" STRAIGHT VICTAULIC, MODEL 350

350 SERIES; SIZE 3"x3" VICTAULIC ENDS
Old.Cat.No.:5062 1257 STRAIGHT FLOW (BLUE)
5062 1237 STRAIGHT FLOW (GREEN)

NO.	DESCRIPTION	OLD.CAT.NO	SAP. CAT.NO.	USD \$
1	Actuator assembly	5062 1237 01	730113-000367	708.80
1.1	Nut	5062 1237 101	730113-000371	3.10
1.2	Lower guide	5062 1237 102	730113-000372	150.20
1.3	O-ring	5062 4340 302	730113-000483	3.50
1.4	Seal	5062 1237 104	730113-000373	11.60
1.5	Plug	5062 1237 105	730113-000374	55.70
1.6	Disc	5062 1237 106		
1.7	Shaft	5062 1237 107		
1.8	Closing spring	5062 1237 108		
1.9	Disc	5062 1237 106		
1.1	O-ring	5062 1237 110	730113-000540	0.30
1.11	O-ring	5062 1237 111	730113-000376	6.70
1.12	Reduction nut	5062 1237 112	730113-000377	91.40
1.13	O-ring	5062 1237 113	730113-000378	3.10
1.14	Nut	5062 1237 114	730113-000379	0.80
1.15	Separation partition	5062 1237 115	730113-000380	52.50
1.16	Disc	5062 1237 116	730113-000381	46.20
1.17	Diaphragm	5062 1237 117		
1.18	Disc	5062 1237 116	730113-000381	46.20
1.19	Nut	5062 1237 119		
1.2	Cover grey	5062 1237 120	730113-000384	26.30
1.21	Disc	5062 1237 121	730113-000385	0.80
1.22	Bolts	5062 1237 122	730113-000386	1.30
1.23	1/8" NPT plug	5062 1237 123	730113-000387	0.30
2	Upper seat	5062 1237 02	730113-000368	53.60
3	Lower seal	5062 1237 03	730113-000369	96.60
4	Body	5062 1257 04	730113-000414	622.70

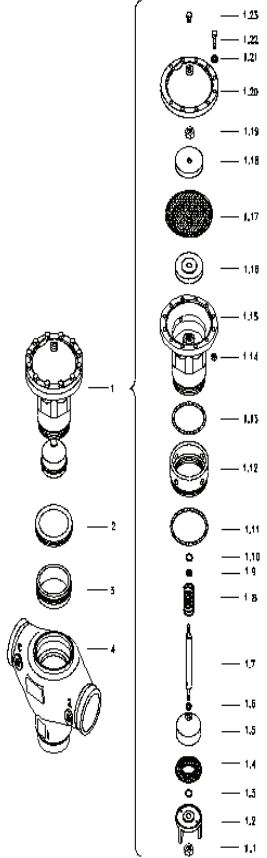


Spare Parts Price List Valid as of Sep 2012

BERMAD 3"X3" POLYMERIC STRAIGHT REVERSE FLOW

350 SERIES; SIZE 3"x3" VICTAULIC ENDS
Old.Cat.No.:5062 1258 STRAIGHT REVERSE FLOW (BLUE)

NO.	DESCRIPTION	OLD.CAT.NO	SAP. CAT.NO.	USD \$
1	Actuator assembly	5062 1238 01	730113-000388	708.80
1.1	Nut	5062 1237 101	730113-000371	3.10
1.2	Lower guide	5062 1238 102	730113-000389	146.00
1.3	O-ring	5062 4340 302	730113-000483	3.50
1.4	Seal	5062 1237 104	730113-000373	11.60
1.5	Plug	5062 1238 105	730113-000390	58.80
1.6	Disc	5062 1237 106		
1.7	Shaft	5062 1237 107		
1.8	Closing spring	5062 1237 108		
1.9	Disc	5062 1237 109		
1.1	O-ring	5062 1237 110	730113-000540	0.30
1.11	O-ring	5062 1238 111		
1.12	Reduction nut	5062 1237 112	730113-000377	91.40
1.13	O-ring	5062 1237 113	730113-000378	3.10
1.14	Nut	5062 1237 114	730113-000379	0.80
1.15	Separation partition	5062 1237 115	730113-000380	52.50
1.16	Disc	5062 1237 116	730113-000381	46.20
1.17	Diaphragm	5062 1237 117		
1.18	Disc	5062 1237 116	730113-000381	46.20
1.19	Nut	5062 1237 119		
1.2	Cover grey	5062 1237 120	730113-000384	26.30
1.21	Disc	5062 1237 121	730113-000385	0.80
1.22	Bolts	5062 1237 122	730113-000386	1.30
1.23	1/8" NPT plug	5062 1237 123	730113-000387	0.30
2	Upper seat	5062 1237 02	730113-000368	53.60
3	Lower seat	5062 1237 03	730113-000369	96.60
4	Body	5062 1257 04	730113-000414	622.70

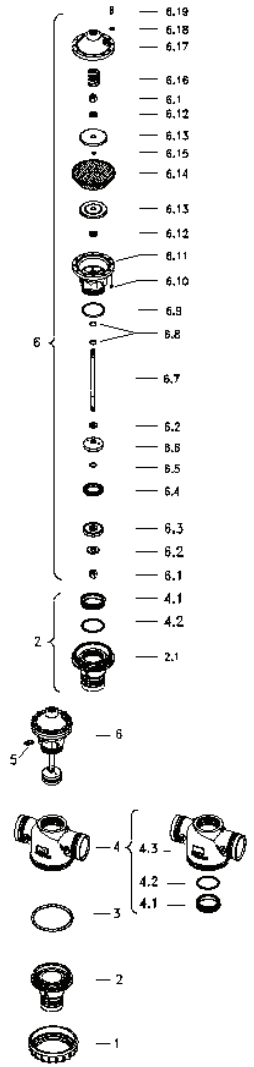


Spare Parts Price List Valid as of Sep 2012

BERMAD 3"X3" POLYMERIC STRAIGHT FLOW

350 SERIES; SIZE 3"x3" VICTAULIC ENDS
Old.Cat.No.:5062 1247 STRAIGHT FLOW

NO.	DESCRIPTION	OLD.CAT.NO	SAP. CAT.NO.	USD \$
1	Cover ring	5062 1247 01	730113-000394	39.90
2	Lower adapter assembly	5062 1247 02	730113-000395	273.00
2.1	Lower adapter	5062 1247 201		
3	O-ring 2-356	5062 1247 03		3.02
4	Body assembly	5062 1247 04	730113-000396	518.70
4.1	Seat	5062 1247 401		
4.2	O-ring 2-152	5062 1247 402		
4.3	Body	5062 1247 403		
5	Straight connector 1/8"x8mm	5062 1917	730113-000424	1.90
6	Actuator assembly	5062 1247 06	730113-000397	456.80
6.1	1/2" Nut	5062 1237 101	730113-000371	3.10
6.2	Disc M12	5062 1237 106		2.06
6.3	Seal washer	5062 1247 603		
6.4	Dynamic seal	5062 1231 303	730113-000359	18.90
6.5	O-ring 2-112	5062 4340 302	730113-000483	3.50
6.6	Plug	5062 1247 606		
6.7	Shaft	5062 1247 607	730113-000399	62.00
6.8	O-ring 5-617	5062 1237 110	730113-000540	0.30
6.9	O-ring 2-236	5062 1237 113	730113-000378	3.10



[Continued]

BERMAD 3"X3" POLYMERIC STRAIGHT FLOW

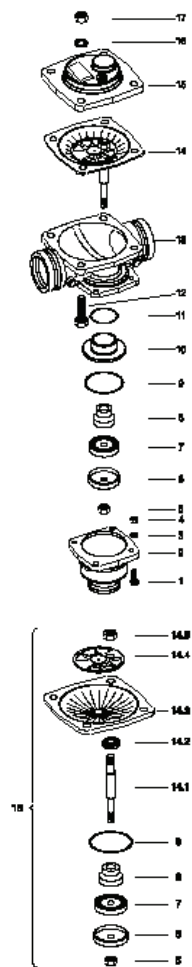
350 SERIES; SIZE 3"x3" VICTAULIC ENDS
Old.Cat.No.:5062 1247 STRAIGHT FLOW [Continued]

NO.	DESCRIPTION	OLD.CAT.NO	SAP. CAT.NO.	USD \$
6.1	M8 Nut	5062 1237 114	730113-000379	0.80
6.11	Separating partition	5062 1247 608	730113-000400	116.60
6.12	Spring washer	5062 1247 609		
6.13	Diaphragm washer	5062 1237 116	730113-000381	46.20
6.14	Diaphragm	5062 1237 117		
6.15	O-ring	5062 1247 610	730113-000401	0.80
6.16	Washer internal spring	5062 1247 409	730113-000398	18.90
6.17	Grey cover straight flow	5062 1237 120	730113-000384	26.30
6.18	Disc M8	5062 1231 05	730113-000355	2.60
6.19	M8x35 Bolt	5062 1237 122	730113-000386	1.30

DOROT FLUSH GAL 4"X3" BACKWASH VALVE, VICTAULIC

MODEL-58; SIZE 4"x3"
Old.Cat.No.:5060 3401

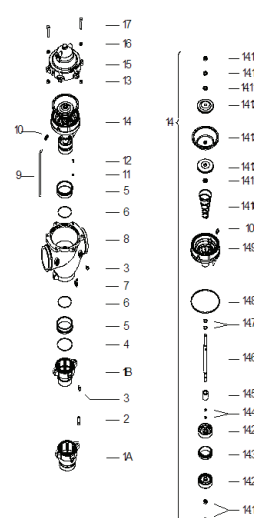
NO.	DESCRIPTION	OLD.CAT.NO	SAP. CAT.NO.	USD \$
1	Bolt	5060 3211 01	730113-000156	1.30
2	Adaptor	5060 3401 02	730113-000195	
3	Washer	5060 3211 03	730113-000158	1.00
4	Nut	5060 3211 04	730113-000159	1.00
5	Nut	5060 3211 05	730113-000160	7.60
6	Seal bowl	5060 3401 06	730113-000196	28.40
7	Seal	5060 3401 07	730113-000198	17.90
8	Guide cone	5060 3401 08	730113-000199	74.60
9	O-ring	5060 3211 09	730113-000168	4.70
10	Seat	5060 3401 10	730113-000200	115.50
11	O-ring	5060 3211 11	730113-000170	4.30
12	Bolt	5060 3211 12	730113-000172	4.00
13	Victaulic body	5060 3401 13	730113-000201	
14	Diaphragm assembly	5060 3401 14	730113-000202	194.30
14.1	Stem	5060 3211 141	730113-000174	80.90
14.2	Small disc	5060 3211 142	730113-000175	11.60
14.3	Diaphragm	5060 3211 143		
14.4	Large disc	5060 3211 144	730113-000177	52.50
14.5	Nut	5060 3211 145	730113-000179	7.10
15	Bonnet	5060 3401 15	730113-000204	125.00
16	Washer	5060 3211 16	730113-000182	1.00
17	Nut	5060 3211 17	730113-000183	0.80
18	Valve kit	5060 0043	730113-000039	342.30



DOROT 4"X4" DOUBLE CHAMBER ANGLE FLOW MODEL 63

Model - 63 - angle 4"x4" Old.Cat.No.:5060 3414 (Blue) 5060 3414r (red)
Model - 63 - angle 4"x3" Old.Cat.No.:5060 3413 (Blue) 5060 3413r (red)
Model - 62 - straight Old.Cat.No.:4"X4" 5060 3454 (blue) 5060 6454r (red)
Model - 62 - straight Old.Cat.No.:4"X3" 5060 3403 (blue) 5060 3403r (red)

NO.	DESCRIPTION	OLD.CAT.NO	SAP. CAT.NO.	USD \$
1A	4" Adaptor (blue color)	5060 3414 01A		
	4" Adaptor (red color)	5060 3414R 01a		
1B	3" Adaptor (blue color)	5060 3413 01B		
	3" Adaptor (red color)	5060 3413R 01b		
2	Bolt	5060 3414 02		
3	Plug	5060 0005	730113-000005	3.80
4	O-ring 2- 248	5060 3414 04		
5	Seat	5060 3414 05		
6	O-ring 9-587	5060 3414 06		
7	Angle 8mm * 1/4"	5067 0084	720501-000038	22.10
8	Body (blue color)	5060 3414 10		
	Body (red color)	5060 3414R 10		
9	Control pipe	5050 0181	720502-000014	3.30
10	Connector 8 mm * 1/4"	5067 0165		
11	Washer	5060 3414 11		
12	Btnhd screw	5060 3414 12		
13	Nut	5060 3414 13		
14	Actuator assembly	5060 3414 14	730113-000208	695.10
14.1	Nut	5060 3414 141	730113-000209	1.80
14.2	Seal disc	5060 3414 142	730113-000213	58.80
14.3	Seal	5060 3414 143	730113-000214	20.00
14.4	O-ring 2-014	5060 3414 144	730113-000215	2.00



(Continued)

DOROT 4"x4" DOUBLE CHAMBER ANGLE FLOW MODEL 63

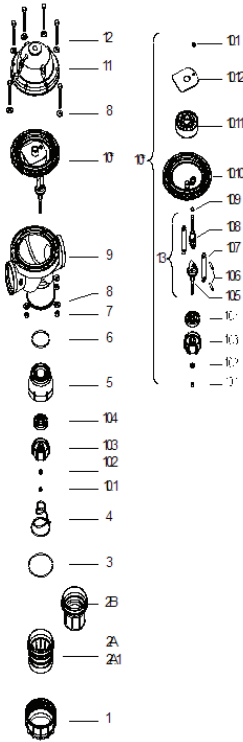
Model - 63 - Angle 4"x4" Old.Cat.No.: 5060 3414 (blue) 5060 3414R (red)
Model - 63 - Angle 4"x3" Old.Cat.No.: 5060 3413 (blue) 5060 3413R (red)
Model - 62 - Straight Old.Cat.No.: 4"x4" 5060 3454 (blue) 5060 6454R (red)
Model - 62 - Straight Old.Cat.No.: 4"x3" 5060 3403 (blue) 5060 3403R (red) (Continued)

NO.	DESCRIPTION	OLD.CAT.NO	SAP. CAT.NO.	USD \$
14.5	Stopper	5060 3414 145	730113-000216	39.90
14.6	Shaft	5060 3414 146		
14.7	O-ring 2-117	5060 3414 147	730113-000217	3.20
14.8	O-ring 2-264	5060 3414 148	730113-000218	24.20
14.9	Botton chamber	5060 3414 149	730113-000219	70.40
14.1	Spring	5060 3414 1410		
14.11	Washer	5060 3414 1411	730113-000210	3.50
14.12	Disc	5060 3414 1412		
14.13	Diaphragm	5060 3414 1413	730113-000211	58.80
14.14	Spring washer	5060 3414 1414	730113-000212	5.30
15	Bonnet (blue color)	5060 3414 15		
	Bonnet (red color)	5060 3414R 15		
16	Washer	5060 3414 16		
17	Bolt	5060 3414 17		
18	Piston assembly	5060 3414 18	730113-000220	252.00

PLASLITE POLYMERIC 4"x3" BACKWASH VICTAULIC ENDS ROUGH DIAPHRAGM

MODEL-F1; SIZE 4"x4" SIZE 4"x3"
MODEL-F2; SIZE 4"x4" Old.Cat.No.: 5060 5424 SIZE 4"x3"
Old.Cat.No.: 5060 4403
Old.Cat.No.: 5060 5423
Old.Cat.No.:5060 5443 Adaptor. 5060 5403 Threaded

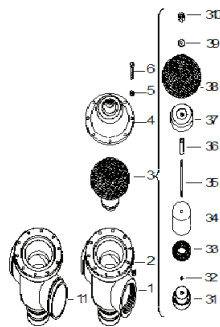
NO.	DESCRIPTION	OLD.CAT.NO	SAP. CAT.NO.	USD \$
10.6	Connector pin	5060 4424 142	730113-000244	
10.7	Shaft	5060 4424 143	730113-000245	
10.8	Upper connector	5060 4424 144	730113-000246	
10.9	2-112 O-ring	5060 4424 145	730113-000247	1.60
10.1	Diaphragm (low pressure)	5060 4424 146	730113-000248	77.70
	Diaphragm (high pressure)	5060 5424 146	730113-000263	77.70
10.11	Upper disc	5060 4424 147	730113-000249	30.50
10.12	Stopper disc	5060 4424 148	730113-000250	97.70
11	Bonnet	5060 4424 15	730113-000252	69.30
12	M10x60 bolt	5060 4424 16	730113-000253	10.50
13	Shaft complete	5060 4424 17	730113-000254	111.30



BERMAD 4"X3" VICTAULIC / THREADED FOR STAR SYSTEM RED STRAIGHT FLOW

350 SERIES; SIZE 4"x3"
Old.Cat.No.: 5062 4340 VIC / THREADED (RED)
Old.Cat.No.: 5062 4347 VIC / VIC (RED)

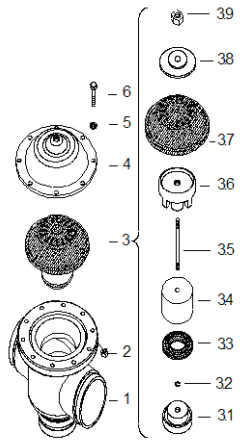
NO.	DESCRIPTION	OLD.CAT.NO	SAP. CAT.NO.	USD \$
1	Victaulic / 3" threaded body	5062 4340 01	730113-000471	890.40
1.1	Victaulic / 4" vic body	5062 4347 01	730113-000494	961.80
2	Nut	5062 4340 02	730113-000475	2.60
3	Internal assembly	5062 4013	730113-000469	618.50
3.1	Plug washer	5062 4340 301	730113-000482	159.60
3.2	O-ring	5062 4340 302	730113-000483	3.50
3.3	Seal	5062 4340 303	730113-000484	25.20
	Seal (old)	5062 4340 303OL	730113-000486	17.90
3.4	Plug	5062 4340 304	730113-000487	111.30
3.5	Shaft	5062 4340 305	730113-000488	23.10
3.6	Spacer	5062 4340 306		
3.7	Diaphragm washer	5062 4454 307	730113-000498	134.40
3.8	Diaphragm	5062 4340 308	730113-000489	62.00
3.9	Nut	5062 4340 309	730113-000490	16.80
3.1	Nut	5062 4340 310	730113-000491	1.90
4	Cover	5062 4340 04	730113-000476	127.10
5	Washer	5062 4340 05	730113-000477	1.00
6	Bolt	5062 4340 06	730113-000478	1.00



BERMAD 4"X4" VICTAULIC / VICTAULIC BLUE STRAIGHT FLOW

350 SERIES; SIZE 4"x4"
Old.Cat.No.: 5062 4454 VIC / VIC (BLUE)

NO.	DESCRIPTION	OLD.CAT.NO	SAP. CAT.NO.	USD \$
1	Body	5062 4454 01	730113-000496	798.00
2	Nut	5062 4340 02	730113-000475	2.60
3	Internal assembly	5062 4013	730113-000469	618.50
3.1	Plug washer	5062 4340 301	730113-000482	159.60
3.2	O-ring	5062 4340 302	730113-000483	3.50
3.3	Seal	5062 4340 303	730113-000484	25.20
3.4	Plug	5062 4340 304	730113-000487	111.30
3.5	Shaft	5062 4340 305	730113-000488	23.10
3.6	Diaphragm washer with stoper	5062 4454 307	730113-000498	134.40
3.7	Diaphragm	5062 4340 308	730113-000489	62.00
3.8	Disc	5062 4340 309	730113-000490	16.80
3.9	Nut	5062 4340 310	730113-000491	1.90
4	Cover	5062 4454 04	730113-000497	127.10
5	Washer	5062 4340 05	730113-000477	1.00
6	Bolt	5062 4340 06	730113-000478	1.00

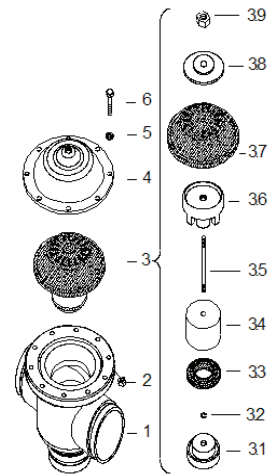


BERMAD 4"x4" VICTAULIC / VICTAULIC STRAIGHT REVERSE FLOW BLUE

350 SERIES; SIZE 4"x4" REVERSE FLOW

Old.Cat.No.: 5062 4455 VIC / VIC (BLUE)

NO.	DESCRIPTION	OLD.CAT.NO	SAP. CAT.NO.	USD \$
1	Body	5062 4454 01	730113-000496	798.00
2	Nut	5062 4340 02	730113-000475	2.60
3	Internal assembly	5062 4015	730113-000470	729.80
3.1	Plug washer	5062 4340 301	730113-000482	159.60
3.2	O-ring	5062 4340 302	730113-000483	3.50
3.3	Seal	5062 4340 303	730113-000484	25.20
3.4	Plug	5062 4340 304	730113-000487	111.30
3.5	Shaft	5062 4340 305	730113-000488	23.10
3.6	Diaphragm washer with stoper	5062 4455 307	730113-000501	203.70
3.7	Diaphragm	5062 4340 308	730113-000489	62.00
3.8	Disc	5062 4455 309	730113-000502	111.30
3.9	Nut	5062 4340 309	730113-000490	16.80
4	Cover	5062 4455 04		
5	Washer	5062 4340 05	730113-000477	1.00
6	Bolt	5062 4340 06	730113-000478	1.00



www.irrigationglobal.com

Arkal disc filters spare parts catalogue

Spare Parts Price List Valid as of Sep 2012