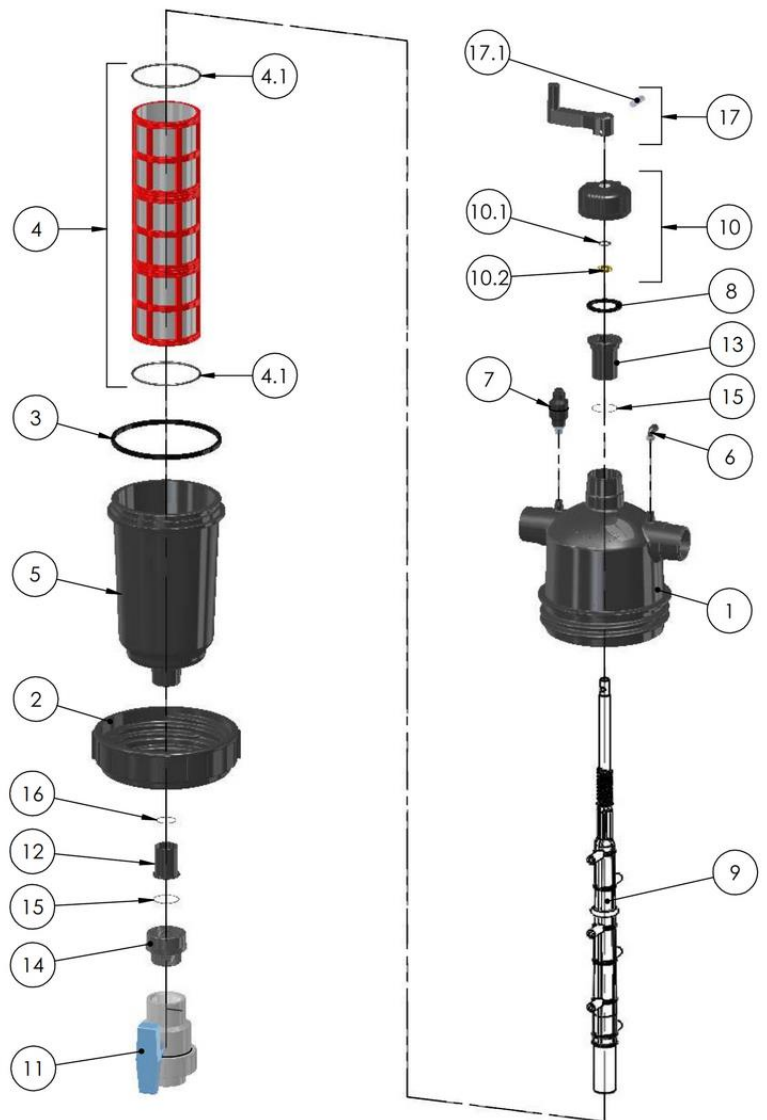


"T" SCANAWAY FILTERS & SCANAWAY ASSEMBLY KITS

DESCRIPTION	SCANAWAY FILTER	SCANAWAY ASSEMBLY KIT
2"T Scanaway Filter (BSP)	030000-000002	700190-001386
2"T Scanaway Filter (NPT)	030000-000048	700190-001398
2"T-Super Scanaway Filter (BSP)	030002-000001	700190-001390
2"T-Super Scanaway Filter (NPT)	030002-000007	700190-001391
3"T Scanaway Filter (BSP)	030004-000001	700190-001401
3"T Scanaway Filter (NPT)	030004-000007	700190-001407
3"T Scanaway Filter (UNFL)	030004-000009	700190-001401
3"T Scanaway Filter (ASA)	030004-000013	700190-001407

NO.	DESCRIPTION	CAT. NO.
1	Housing (2"T, 2"T-S) BSP Housing (2"T, 2"T-S) NPT	710103-004372 710103-004373
1	Housing-TH (3"TL) BSP Housing-TH (3"TL) NPT	710103-004385 710103-004386
2	Tightening nut (T filters)	710103-000544
3	O-Ring P2-437	770102-000169
4	Weavewire screen Ø110 x 250mm (2")*	700101-XXXXXX
4	Weavewire screen Ø110 x 370mm (2"T-S, 3"T)*	700101-XXXXXX
4.1	O-Ring P2-242	770102-000130
5	Lid (2"T)	710103-005731
5	Lid (2"T-S, 3"T)	710103-005700
6-7	Clogging Indicator assembly:	700190-001304
6	L-Connector (1/4" x 6mm)	720501-000196
7	Clogging indicator housing	700190-001245
8	Cap seal 2"	770103-000041
8	Cap seal 3"	770103-000047
9	2"T Scanner 2"T-S & 3"T Scanner	710101-001430 710101-001431
10	Cap assembly 2" Cap assembly 2" NPT	700190-001393 700190-001394
10	Cap assembly 3" Cap assembly 3" NPT	700190-001405 700190-001406
10.1	O-Ring P2-114	770102-000083
10.2	Fixing ring (brass)	710103-000700
11	Ball valve 1 1/2" (PVC)	730104-000253
12	2" plastic bearing	710101-001370
13	Suction Scanner Drive Bushing (2"T,2"T-S)	710103-000689
13	Suction Scanner Drive Bushing (3"T)	710103-000709
14	Connector 1 1/2"F x 1 1/2"M	780101-000955
15	O-Ring P2-129 (2"T & 2"T-S)	770102-000096
15	O-Ring P2-232 (3"T)	770102-000121
16	O-Ring P2-028	770102-000069
17	Handle	700190-001414
17.1	Pin	710101-000651

* Requires micron and filter model



Clogging Indicator Assembly

"T" SCANAWAY FILTERS & SCANAWAY ASSEMBLY KITS ASSEMBLY AND OPERATION INSTRUCTIONS

Assembly procedure:

1. Release the pressure and drain the filter.
2. Remove the filter lid and screen.
3. Insert the Scanner Lower Bearing (#12) to the bottom port outside the filter lid (#5). Use a plastic or wooden tool to hit it slightly and press it to its place. Verify that the O-ring (#16) is located in its place.
4. Insert the Drive Bushing (#13) into the upper port of the filter housing. Verify that the O-ring (#15) is in its place.
5. Tighten the Cap (#10) on the upper port thread of the filter. Verify that the seal (#8) is in its place.
6. Insert the Scanner (#9) to the filter housing (#1) and screw it into the Drive Bushing (#13). It is recommended to lubricate the shaft with some silicon grease.
7. Install the Handle (#9) to the Scanner Shaft and fix the pin (#17.1) through the handle (#17).
8. Rotate the handle Clockwise all the way inward the filter.
9. Insert the screen into the filter, verifying that the O-rings exist, and the screen is seated properly in its place.
10. Close the filter lid and tighten it with the Tightening Nut (#2), verify that the Suction Scanner lower part is moving freely through the bearing.
11. Install the 11/2" Connector (#14) with its seal (#15) and the ball valve (#11). *If the ball valve is not supplied with the kit, a manual 11/2" valve must be installed.*
12. *(Optional) Install the Clogging Indicator on the inlet 1/4" inlet pressure check port. Connector (#6) should be installed on the outlet 1/4" outlet port. The 6-mm pilot tube should be connected between the Connector (#6) and the Clogging Indicator (#7).*

Operation instructions:

1. Cleaning of the filter must be done when pressure differential across the screen reaches 0.5-bar (7 psi) *or when the clogging indicator Red button pops up.*
2. **Cleaning the Scanaway filter must be done while the filter is under pressure.**
3. Open the flushing valve gradually.
4. Turn the handle all the way upwards and then downward.
5. Close the valve gradually.
6. In case that the filter is still clogged (pressure indicator button is up). Repeat the above while the downstream valve of the filter is closed.

In most cases this will clean the screen, however, if necessary, close the upstream valve, drain the filter and clean it manually.

Warning!

In order to prevent water hammer (Surge), always open and close valves in a gradual motion.

[Upgrade kit assembly scanaway suction filters amiad](#)
[Click for online orders and support](#)

[Click for support by email for scanaway filters assembly \(suction\) amiad](#)