

# HydroBloom 8 mm Advanced Kit contents

Product	Quantity
<b>HydroBloom dripline 8/32/1.2/0.2 Brown</b>	500 m
<b>8/32 mm blind tube</b>	50 m
<b>Insert coupling</b>	30
<b>Insert tee</b>	15
<b>Insert elbow</b>	10
<b>Insert adaptor ½" Thread</b>	5
<b>Line end sleeve</b>	30
<b>BloomPeg 8 mm</b>	100
<b>Mini punch inserter 3.7 mm</b>	1
<b>¾" 140 mesh Filter and Valve</b>	1



## Specifications - Emitter

- Round emitter with two large inlet filters
- Efficient labyrinth enables uniform flow rate and high clogging resistance
- Two water outlet chambers , one on each side of the emitter
- Manufactured from high quality materials

### Flow rate vs. Pressure

Pressure (bar)	Flow rate (l/h)
1.0	1.2
1.5	1.5
2.0	1.7





## Specifications - Dripline

- I.D: 6.4 mm
- O.D: 8 mm
- Wall thickness: 0.8 mm
- Operating pressure range: 0.5-2.0 bar
- Standard dripper spacing: 15, 20, 30, 40, 50 cm
- Recommended filtration: 100 micron (155 mesh)
- Color: brown





## Max. recommended dripline length on flat terrain

Emitter spacing (cm)	15	20	30	40	50
Max. length (m)	13	17	24	30	35





## Specifications - Coil

- Length: 25 m
- Emitter spacing: 20 cm
- Core diameter: 160 mm
- Outside diameter: 245 mm
- Width: 70 mm
- Tying: 4 strings





## Accessories: Insert coupling



**Serving as a start connector**



**Joining two driplines**

## Insert tee



**Joining 3 driplines**



**Connecting 2 driplines as  
start connector**

## Insert elbow



**In the angle between  
driplines**



**As a start connector**



## Insert adaptor ½" THM



**Connecting dripline to water source**



## Line end ring



A “ring” cut from 16 mm tube



Ring placed at the end of the dripline

## Mini punch inserter

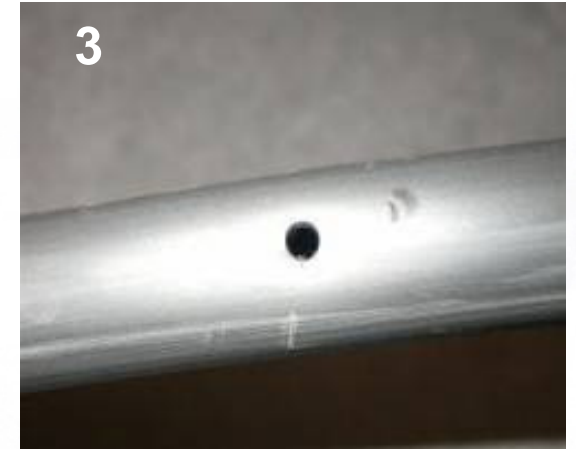


**3.7 mm punch**

**Hole in the handle for  
insertion of insert coupling  
serving as start connector**

# Mini punch inserter – Usage instructions

## Pictures 1-3: Punch a hole



## Pictures 4-6: Insert the coupling, with the other side of the punch





## HydroBloom Stake



**A plastic stake for stabilizing 8 mm driplines and fixing them to the soil**





## **$\frac{3}{4}$ " I 40 mesh filtap a filter and Valve combined**

**A high quality  $\frac{3}{4}$ " I 40 mesh [100 mic] disc filter.  
The filtap is combined with a tap valve.**





## Applications: Flower containers





## Flower containers





## “Loop” around a tree





## Loop (close-up)





## Flower pots



# Home vegetable gardens





## Rock gardens





## Rock gardens





## Traffic islands

