

## Kit contents

Product	Quantity (unit /meter)
<b>HydroBloom dripline 8/32/1.2/0.2 – 25 m</b>	1
<b>Insert coupling</b>	3
<b>Insert tee</b>	2
<b>Insert elbow</b>	1
<b>Insert adaptor ½” THM</b>	1
<b>Line end sleeve</b>	3
<b>Mini punch inserter 3.7 mm</b>	1

## Specifications - Emitter

- Round emitter with two large inlet filters
- Efficient labyrinth enables uniform flow rate and high clogging resistance
- Two water outlet chambers , one on each side of the emitter
- Manufactured from high quality materials

### Flow rate vs. Pressure

Pressure (bar)	Flow rate (l/h)
1.0	1.2
1.5	1.5
2.0	1.7





## Specifications - Dripline

- I.D: 6.4 mm
- O.D: 8 mm
- Wall thickness: 0.8 mm
- Operating pressure range: 0.5-2.0 bar
- Standard dripper spacing: 15, 20, 30, 40, 50 cm
- Recommended filtration: 100 micron (155 mesh)
- Color: brown or green





## Max. recommended dripline length on flat terrain

Emitter spacing (cm)	15	20	30	40	50
Max. length (m)	13	17	24	30	35



## Specifications - Coil

- Length: 25 m
- Emitter spacing: 20 cm
- Core diameter: 160 mm
- Outside diameter: 245 mm
- Width: 70 mm
- Tying: 4 strings





## Accessories: Insert coupling



**Serving as a start connector**



**Joining two driplines**

## Insert tee



**Joining 3 driplines**



**Connecting 2 driplines as  
start connector**

## Insert elbow



**In the angle between  
driplines**



**As a start connector**





## Insert adaptor ½" THM



**Connecting dripline to water source**

## Line end ring



A “ring” cut from 16 mm tube



Ring placed at the end of the dripline

## Mini punch inserter



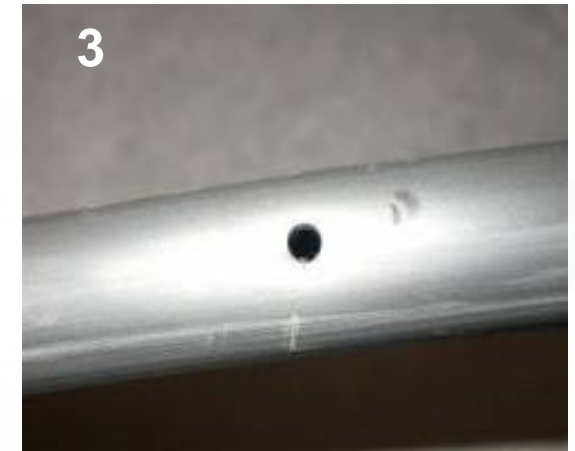
**3.7 mm punch**

**Hole in the handle for  
insertion of insert coupling  
serving as start connector**



## Mini punch inserter – Usage instructions

### Pictures 1-3: Punch a hole



### Pictures 4-6: Insert the coupling, with the other side of the punch



## HydroBloom Stake

**A plastic stake for stabilizing 8 mm driplines and fixing them to the soil**





## Applications: Flower containers







## Flower containers





## “Loop” around a tree





## Loop (close-up)





## Flower pots





## Home vegetable gardens





## Rock gardens









